

**SANITARY DISTRICT NO. 5 OF MARIN COUNTY
2001 Paradise Drive
Tiburon, California 94920**

AGENDA

**Capital Improvement Program Committee Meeting
Tuesday January 11, 2022, 5:00 p.m.**

CORONA VIRUS (COVID-19) ADVISORY NOTICE

Consistent with Executive Orders No. N-25-20 and No. N-29-20 from the Executive Department of the State of California, the Meeting will not be physically open to the public and all Board Members and Staff will be teleconferencing into the meeting.

How to Submit Public Comments:

Comments submitted prior to the commencement of the meeting will be presented to the Committee and included in the public record for the meeting.

Public Comments are to be submitted via email to rdohrmann@sani5.org.

In addition, members of the public who are calling-in will have the opportunity to provide public comments by following the steps below:

How to Participate in the Meeting:

Join Zoom Meeting by clicking on the following link:

<https://us02web.zoom.us/j/6230620778>

Meeting ID: 623 062 0778

or join by phone:

Call in number: (669) 900-9128

Participant Code: 623 062 0778

I. Roll Call

II. Public Comments

III. New Business

- 1. Verbal discussion regarding future upgrades on Main plant switchgear- status of submitted proposals.**
- 2. Review and discuss Nute Engineers Proposal regarding 2022 Sewer Rehabilitation Project**
- 3. Verbal discussion regarding status and timeline for the Cove Road Pump station generator, roof and control panel replacement project.**
- 4. Verbal discussion regarding potential timeline for the 2022/2023 Digester Cleaning and pump and piping upgrade project.**

IV. Adjournment

*This Committee may be attended by Board Members who do not serve on this committee. In the event that a quorum of the entire Board is present, this Committee shall act as a Committee of the Whole. In either case, any item acted upon by the Committee or the Committee of the Whole will require consideration and action by the full Board of Directors as a prerequisite to its legal enactment. **Accessible public meetings:** Any member of the public who needs accommodations should email the Office Manager, at rdohrmann@sani5.org, who will use her best efforts to provide as much accessibility as possible while also maintaining public safety.*



Civil & Sanitary Consultants

January 5, 2022

Mr. Tony Rubio, District Manager/Chief Plant Operator
Sanitary District No. 5
P.O. Box 227
Tiburon, CA 94920

**Re: 2022 Sewer Rehabilitation Project
Proposal for Engineering Services**

Dear Tony:

In response to your request Nute Engineering is pleased to submit the following proposal for the preparation of plans and specifications for rehabilitation of various sewers in the Tiburon and Belvedere service zones, for the 2022 Sewer Rehabilitation Project.

Similar to the recent 2019 Sewer Rehabilitation Project, the sewers selected for rehabilitation and improvement are sewers within easements and streets for the Tiburon zone and a combination of street sewers and easement sewers for the Belvedere zone. All of these sewers have been found to have various defects discovered as a result of closed circuit televising and the District's daily maintenance reports. Rehabilitation of these clay sewers can be done by pipebursting the existing sewer with a pulled pipe breaking head. Attached to the breaking head is the end of a new high density polyethylene pipe (HDPE). This new pipe is pulled in by winch to completely replace the clay sewer pipe. Sometimes the older existing pipe condition is such that the contractor may have to dig down and clear collapsed pipe sections to facilitate successful pipe bursting. For determining this, the contractor pre-videos the existing sewer. Finally, new pipe connections and laterals are reinstated at the sewer manholes and the finished pipe is tested. Normally, all new sewers are connected to the existing manhole. Each existing manhole will be assessed and determined if they are in good condition. (At least one new manhole will be needed in the Belvedere sewer segments).

The 2022 Sewer Rehabilitation Project will address approximately 25 percent more pipe footage than the 2019 project. In the Tiburon zone, the project will consist of pipebursting approximately 4,754 LF (linear feet) of sewer lines. In the Belvedere zone, the project will consist of pipebursting approximately 701 LF of sewer lines.

The following is the list of sewers selected for the 2022 Sewer Rehabilitation Project:

Tiburon – Various Locations

MH 71 to MH 73, Centro West to Racoon Lane street and easement, 258 LF
MH 19a to MH 19, Esperanza Street, 122 LF
MH 36 to MH 35, Linda Vista to Mareast, 210 LF
MH 116 to MH 113, Harbor Oak Drive to Manor Way, 223 LF
MH 360 to MH 360a, Eastview Avenue, 191 LF
MH 360a to MH 360b, Eastview Avenue, 195 LF
MH 360 to MH 643, Eastview Avenue, 242 LF
MH 643 to MH 359c, Eastview Avenue, 208 LF
MH 359c to MH 359, Eastview Avenue, 125 LF
MH 74a to 74b, Easement adjacent to Racoon Lane, 303 LF
MH 74b to MH 74, Easement adjacent to Racoon Lane, 165 LF
MH 72a to MH 71, Easement adjacent St. Bernard Lane, 392 LF
MH 66c to MH 66, Easement adjacent to Diviso Street, 125 LF
MH 78 to MH 76, Easement adjacent to Ridge Road, 101 LF
MH 51a to MH 51, Easement alongside Centro East Street, 425 LF
MH 60a to MH 60, Spanish Trail Road, 360 LF
MH 359a to 359b, Main Street, 240 LF
MH 58 to MH 41, Paradise Drive to Mar East, 204 LF
MH 32 to MH 31, Paradise Drive, 210 LF
MH 31 to JBox, Paradise Drive, 474 LF

Belvedere – Various Locations

MH P9 to MH P8, Alcatraz Avenue, 197 LF
MH P8 to MH P7, Alcatraz Avenue, 41 LF
MH P11 to MH P10 6, Alcatraz Avenue, 135 LF
MH P10 to MH P2, Alcatraz and Belevue Avenue, (New manhole at blind tee), 120 LF
MH P2 to MH P1, Belevue to Beach Rd, 113 LF
R 25 to R 24, Beach Rd, 95 LF

(See attached area system maps)

In addition, we intend to meet with Public Works staff for both the Town of Tiburon and City of Belvedere to discuss expected paving restoration requirements. Recent changes to the Uniform Standards All Cities and County of Marin for the trench paving requirements are being adopted by the respective Public Works staff. During the most recent project, requirements for additional paving beyond the initial project were brought up by the Public Works representative for the Town of Tiburon after design was completed and the low bid accepted. Design period meetings with the respective Town staffs should correct this.

SCOPE OF WORK

The scope of work to prepare for rehabilitation of the sewers listed above will consist of the following:

Schedule A Services – Preparation of Plans and Specifications

1. Prepare plan drawings showing the sewer line location, spot repair locations and sewers to be pre-televised by the contractor.
2. Prepare plan drawings showing the sewer lines to be pipeburst.
3. Prepare contract documents and technical specifications for the project.
4. Walk through all project alignments with District staff to cross check constructability of sewers.
5. Confer with the Town of Tiburon and City of Belvedere regarding traffic control requirements necessary for this work, and pavement restoration, if any, and incorporate these requirements in the plans and specifications.
6. Based on the construction plans and specifications, prepare a final estimate of the project construction cost.
7. Assist the District at one (1) public pre-bid meeting related to the bidding process, prepare addenda and review the bid documents for responsiveness.
8. Attend one (1) meeting with staff to review the project.

Schedule B Services – Services During Construction

1. Review Contractor's submittals and shop drawings.
2. Render advice on the conduct of the construction work.
3. Evaluate proposals from the Contractor for modifications to the contract work and prepare change orders to the contract for the District's approval.

Schedule C Services – Construction Observer Services (Optional)

1. Provide a construction observer two and one half (2.5) hours a day for the contract period.

SERVICES NOT INCLUDED IN THIS PROPOSAL

It is understood that the following services are outside the scope of this proposal and will need to be provided by others as necessary or advisable.

1. Soil engineering services are not included at this time because this is a pipeburst project, and only requires soil compaction testing on the sewer segments which end in open trenching within paved streets. Soil boring's have not been conventionally done for the pipeburst projects. Based on recent projects, the full extent of paving required by the Public Works departments of Tiburon and Belvedere has not been known until the construction period. Because of this, it has been difficult to estimate the construction period costs for soil compaction. Therefore, we recommend the District utilize Miller Pacific Engineering Group independently on a time and materials basis, during the construction period.
2. Hazardous materials investigations, assessment or removal.
3. Determining the exact location of sewer laterals.
4. Locating or potholing of underground utilities or showing utilities on the plans.
5. Field topographical surveys to determine manhole locations or elevations. Boundary surveys to determine property lines.
6. Environmental review or preparation of an environmental impact report of the project.
7. Necessary permit applications and application fees.
8. Legal services in connection with the project.
9. Acquisition of rights of ways, rights of entries or permits.
10. Printing of plans and specifications for bidding purposes and for the Contractor's use.
11. Clerical time to send bid documents out to bidders.
12. Preparation of As Built drawings.

ENGINEERING FEE

We propose to do all the work on a time and materials basis to be billed according to the Schedule of Hourly Rates attached hereto as Attachment A. The following are budgets for the engineering fees for the various schedules outlined above:

Schedule A - Preparation of Plans and Specifications	\$40,988
Schedule B - Services During Construction	\$ 7,546
Schedule C - (Optional) Construction Observer Services	\$26,740

Very truly yours,

NUTE ENGINEERING

By:



Mark T. Wilson, P.E.

Attachment A – Schedule of Hourly Rates
Attachment B – Project Estimating Sheet
Attachment C – Project Sewer System Maps



ATTACHMENT A

2022 HOURLY RATE SCHEDULE

OFFICE PERSONNEL	HOURLY RATE
Principal Engineer	\$258.00
Senior Engineer	211.00
Engineer III	199.00
Engineer II	191.00
Engineer I	165.00
Field Representative*	181.00
Assistant Engineer II	129.00
Assistant Engineer I	119.00
Senior Designer	188.00
CAD Drafter II	158.00
CAD Drafter I	138.00
Technical Administrative Support	118.00
Clerical	101.00
LITIGATION SERVICES	
Court Appearance/Deposition	372.00

*Field Representative for construction is a Prevailing Wage category as required by the California Department of Industrial Relations.

REIMBURSABLE EXPENSES

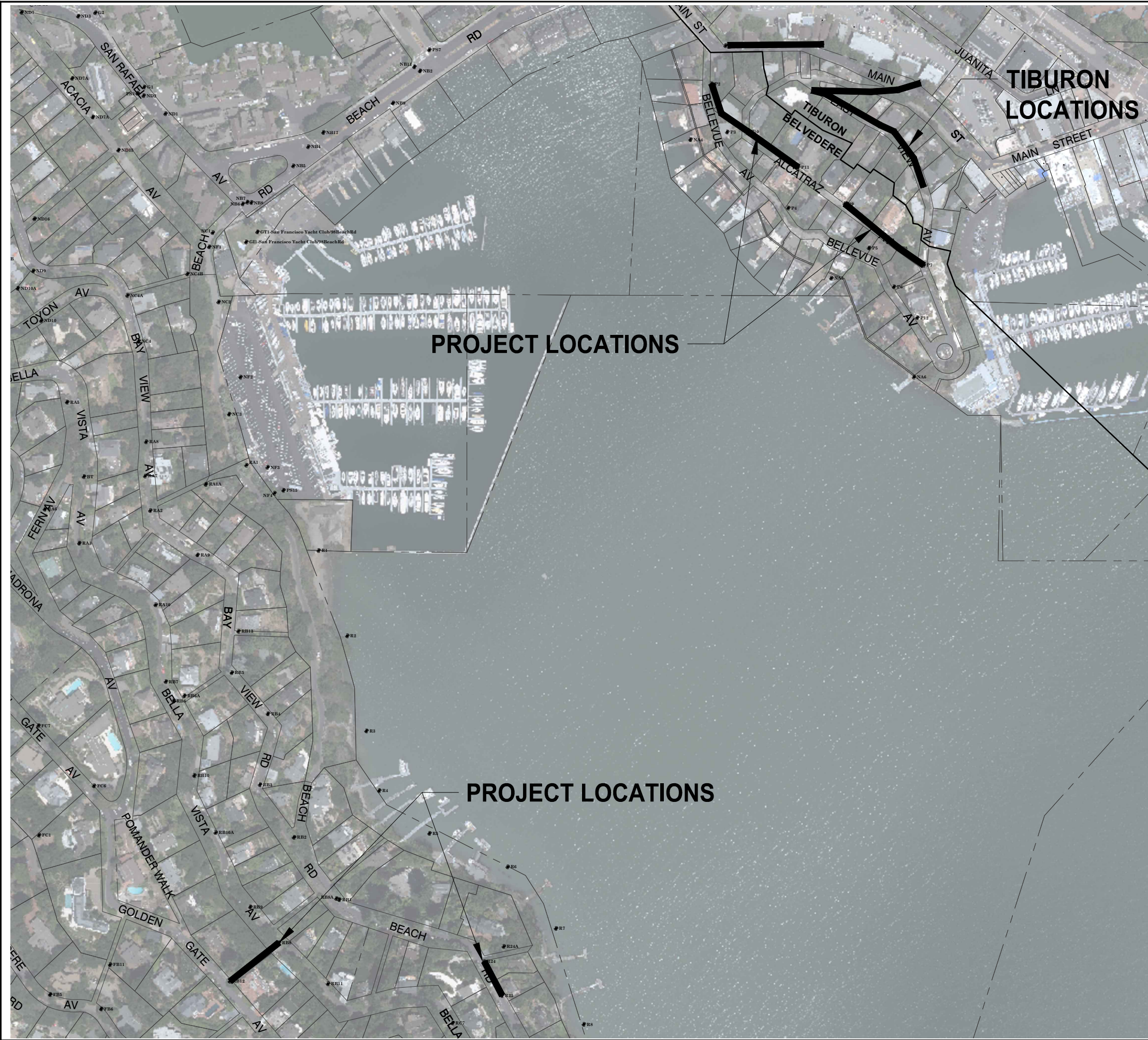
Sub-consultants will be charged at 1.10 times cost. Charges for reproductions, blueprinting, outside computer services, rental of special equipment, delivery, express mail, insurance certificates (where client requires to be listed as an additional insured) and meals and lodging will be charged at 1.10 times cost. Mileage and technology charges are included in the hourly rates. Nute Engineering reserves the right to adjust its hourly rate structure for all ongoing contracts.

EFFECTIVE DATE: January 1, 2022

ATTACHMENT B
SANITARY DISTRICT NO. 5 OF MARIN COUNTY
2022 SEWER REHABILITATION PROJECT
PROPOSAL FOR ENGINEERING SERVICES
PROJECT ESTIMATING SHEET

Description	Rate \$/Hr	Senior Engineer	Engineer II	CAD Drafter II	Tech Admin Support	TOTAL
		\$211	\$191	\$158	\$118	
Schedule A Services - Design and Prepare Plans and Specifications						
1. Prepare plan drawings showing sewer line, spot repair and sewers to televise		2	6	24	1	
2. Prepare plan drawings showing sewer lines to pipeburst		2	26	96	1	
3. Prepare contract documents and technical specifications		4	20		20	
4. Perform site visit of alignments for constructability x-check		6	6	8		
5. Confer with Town of Tiburon and City of Belvedere re traffic control, paving		2	4			
6. Prepare a final estimate of the project construction cost		2	6		2	
7. Attend one (1) meeting with staff to review the project			3			
8. Assist District at one (1) public meeting related to bidding process			3			
	Hours	18	74	128	24	
	Cost	\$3,798	\$14,134	\$20,224	\$2,832	\$40,988
Schedule B Services - Construction Engineering Services						
1. Review Contractor's submittals and shop drawings		4	6			
2. Render advice on the conduct of the construction work		4	6			
3. Evaluate proposed Contractor modifications and prepare change orders		4	6	4	8	
	Hours	12	18	4	8	
	Cost	\$2,532	\$3,438	\$632	\$944	\$7,546
Schedule C Services (Optional) - On-Site Construction Observation						
1. Construction Observer/ Liaison - Cont, Dist, Property Owners, City, Utilities			140			
2. Inspect Installation/Maintenance of Temp Bypass Pumping Systems as Necessary			*			
3. Monitor and Coordinate Overall Safety at the Job Site			*			
4. Coordinate Installation of Traffic Control Signs, SWPPP, Shoring as Required			*			
5. Monitor/Coordinate Contractor Field Changes to Plans & Specs			*			
6. Monitor Compliance w/Const Permits, Recommend Action			*			
7. Coordinate and Implement Access Agreement Conditions as Necessary			*			
8. Coordinate Compaction Testing & Obtain Inspection Releases			*			
9. Review Project for Safety Issues, Bring to Attn of Cont & Dist			*			
10. Perform Final Inspection for all Aspects of Construction			*			
11. Maintain Project Report (Inspection, Const Photos, Mtrl. Testing...)			*			
12. Schedule/Conduct Completion Inspection, Punch Lists, Compliance			*			
	Subtotals		140			
			\$26,740			\$26,740
						\$75,274

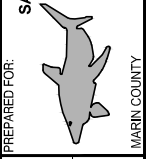
* Construction Observation hours assumes that the Observer will be on-site for 2.5 hours per day for a 90 calendar day project (60 working days).



**NOT APPROVED
FOR CONSTRUCTION**

SANITARY DISTRICT No. 5
2022 SEWER REHABILITATION PROJECT
BELVEDERE
2022 PROPOSED
SEWER IMPROVEMENT PROJECT

JOB NUMBER: **9005**
DATE: **December 30, 2021**
PAGE: **#** OF **#**

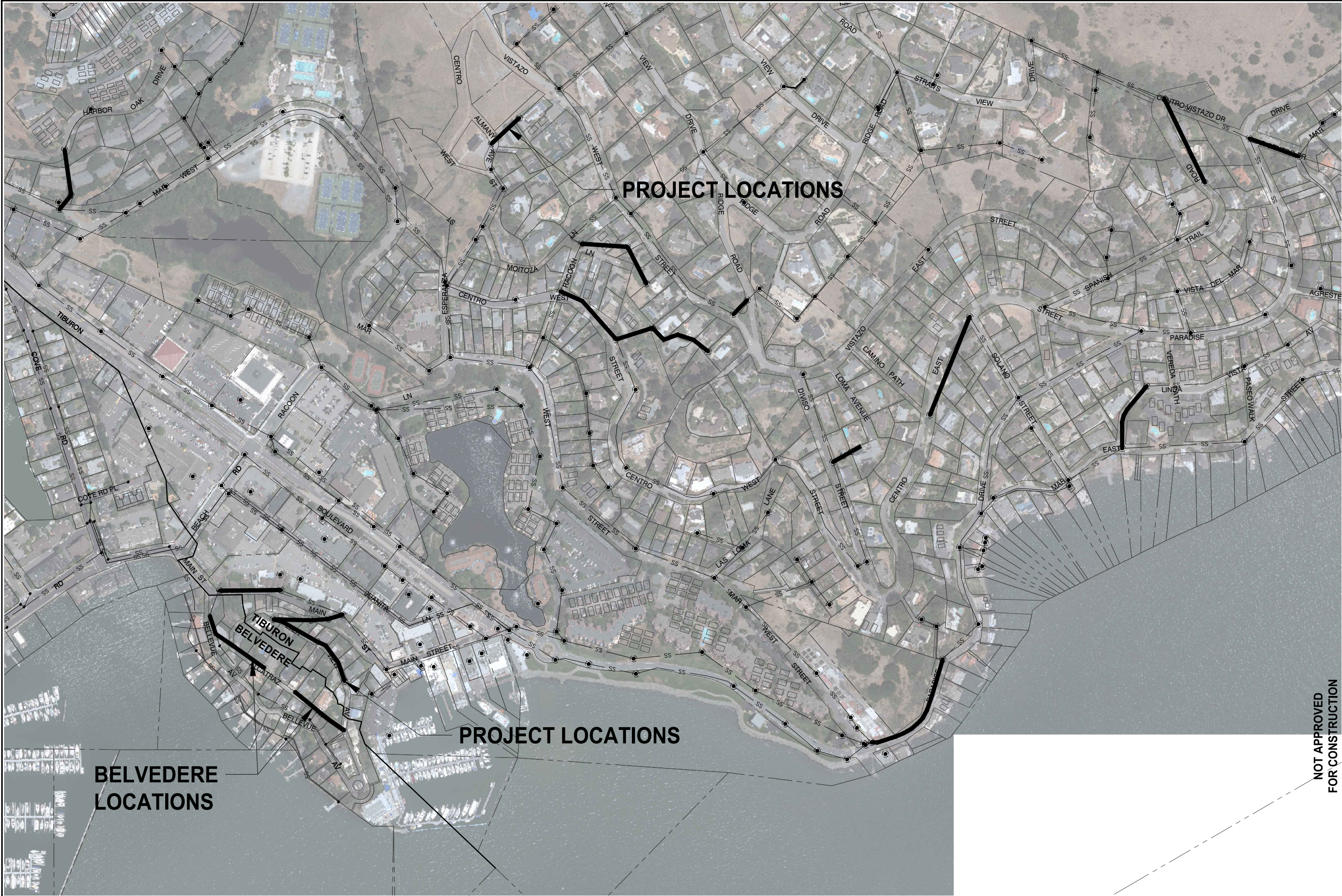


PREPARED FOR:
SANITARY DISTRICT No. 5
2001 PARADISE DRIVE
TIBURON CA 94920
PHONE: (415) 435-1501
FAX: (415) 435-0221
MARIN COUNTY CALIFORNIA

PREPARED BY:
NUTE
Civil and Sanitary Consultants
907 MISSION AVE. SAN RAFAEL, CA 94901
T: 415.453.4480 F: 415.453.0343 www.nute.biz

Designed: **BEO**
Drawn: **BEO**
Checked: **MTW**
Scale: 1" = 1000'
IF DIMENSIONS NOT SPECIFIED IN THESE PLANS, THESE PLANS ARE NOT TO SCALE.

NO.	DESCRIPTION	INIT.
1		
2		
3		
4		
5		
6		
7		
8		
9		
10		



**BELVEDERE
LOCATIONS**

PROJECT LOCATIONS

**NOT APPROVED
FOR CONSTRUCTION**

<p>PREPARED BY: NUITE Civil and Sanitary Consultants 907 MISSION AVE. SAN RAFAEL, CA 94901 T: 415.453.4800 F: 415.453.0343 www.nuite.biz</p>		<p>DESIGNED: [] DRAWN: [] CHECKED: []</p>	<p>DATE: []</p>	<p>NO. []</p>	<p>DESCRIPTION []</p>	<p>INIT. []</p>	
<p>PREPARED FOR: SANITARY DISTRICT No. 5 2001 PARADISE DRIVE TIBURON, CA 94920 PHONE: (415) 435-1501 FAX: (415) 435-0221</p>		<p>SCALE: 1" = 100'</p> <p>ALL DIMENSIONS AND ELEVATIONS ARE IN FEET UNLESS OTHERWISE NOTED.</p>		<p>DATE: December 30, 2021</p>			<p>JOB NUMBER: 9005</p>
<p>TIBURON 2022 PROPOSED SEWER IMPROVEMENT PROJECT</p>		<p>SANITARY DISTRICT No. 5 2022 SEWER REHABILITATION PROJECT</p>		<p>DATE: December 30, 2021</p>			<p>PAGE: # OF #</p>