

**NOTICE AND AGENDA
Regular Board Meeting
at Sanitary District No. 5 of Marin County
Thursday, August 18, 2022**

5:00 P.M. REGULAR BOARD MEETING

COVID-19 ADVISORY NOTICE

Consistent with Assembly Bill 361 revising Government Code section 54953, and Resolution No. 2021-07 of this Board enacted in accordance therewith, the Meeting will not be physically open to the public and all Board Members and Staff will be teleconferencing into the meeting.

How to Submit Public Comments:

Comments submitted prior to the commencement of the meeting will be presented to the Board and included in the public record for the meeting.

Public Comments are to be submitted via email to rdohrmann@sani5.org.

In addition, members of the public who are calling in, will have the opportunity to provide public comments by following the steps below:

How to Participate in the Meeting:

Join Zoom Meeting by clicking on the following link:

<https://us02web.zoom.us/j/6230620778>

Meeting ID: 623 062 0778 or join by phone:

Call in number: (669) 900-9128 Participant Code: 623 062 0778

ROLL CALL

PUBLIC COMMENTS: The public is invited to address the Board on items that do not appear on the agenda and are within the subject matter jurisdiction of the Board. The Brown Act does not allow the Board to take action on any public comment. Please limit public comments to no more than three minutes.

DIRECTORS' COMMENTS AND/OR AGENDA REQUESTS:

CONSENT CALENDAR:

1. Motion to review and affirm Resolution No. 2021-08: A Resolution proclaiming the continuing need to meet by teleconference in accordance with Government Code Section 54953 – Action
2. Approval of July 21, 2022, Regular Board Meeting Minutes (Dohrmann/Mulloy)
3. Review and receive all electronic fund transfers (EFTs) and approve warrants from July 15th, 2022, through August 15th, 2022 (JP Morgan Chase Bank, check no. 9062 through check no. 9119, all transactions totaling(\$-230,028.91) and receive July 2022, payroll, in the sum of \$228,381.00 (Dohrmann)
4. Receipt of Financial Reports for July 2022 (Dohrmann)
5. Approval of DKF Solutions Group Quote for Cal OSHA Training Management program. Development of online training courses and providing in-person required trainings. (Rubio)
6. Approval of JM Integration Proposal for Bi-Weekly Maintenance & Troubleshooting services for both plants and the District's 24 pump stations (Rubio)

MANAGEMENT REPORTS:

7. District Manager Summary Report (Rubio)

NEW BUSINESS:

8. Review and Consideration to accept lowest bid for the 2022 Sewer Rehabilitation Project – Tiburon & Belvedere, and authorizing the District Manager to issue a Notice to Proceed (Rubio) - Action
9. Review and Discuss Dry Weather Primary Clarifier Capital Improvement Projects and authorize District Manager to proceed with equipment procurement (Rubio) - Action
10. Review and discuss Wet Weather Primary Clarifier floor emergency repair work proposals and authorize District Manager to schedule repairs (Rubio) - Action
11. Declaration of Surplus Property- Ford Ranger (Rubio) - Action
12. Provide authorization to District Manager to negotiate the procurement of 2 Ford Maverick Hybrids as they become available (Rubio) - Action
13. Discussion regarding memorial ideas for Tim O’Day and review of charitable organizations he was a part of for those wishing to make personnel contributions (Rubio) - Action
14. Discussion regarding Main Plant Landscaping proposal (Rubio) - Action

UNFINISHED BUSINESS:

COMMITTEE REPORTS:

15. Capital Improvement Program Committee (Arias-Montez/Moody)
16. Finance & Fiscal Oversight Committee (Benediktsson/Arias-Montez)
17. Governance Committee (Moody/Snyder)
18. Personnel Committee (Snyder/Carapiet)

OTHER BUSINESS:

ENVIRONMENTAL:

CORRESPONDENCE:

INFORMATIONAL ITEMS:

ADJOURNMENT

The Board will be asked to adjourn the meeting to a Regular Board Meeting on September 15, 2022, at 5:00 P.M.

At its discretion, the Board of Directors may consider the above-agenda items out of the order in which they appear currently. Accessible public meetings: Upon request, the District will provide written agenda materials in appropriate alternate formats, or disability-related modification or accommodation, including auxiliary aids or services to enable individual with disabilities to participate in public meetings. Please submit written requests to the District at P.O. Box 227, Tiburon, CA 94920 or rdohrmann@sani5.org at least two days prior to the meeting.

RESOLUTION 2021-08

SANITARY DISTRICT NO. 5 OF MARIN COUNTY

A RESOLUTION PROCLAIMING THE CONTINUING NEED TO MEET BY TELECONFERENCE IN ACCORDANCE WITH GOVERNMENT CODE SECTION 54953

WHEREAS, on January 30, 2020, the World Health Organization declared the COVID-19 outbreak a public health emergency of international concern; and

WHEREAS, on March 4, 2020, the Governor of the State of California declared a state of emergency in order to address the COVID-19 pandemic; and

WHEREAS, on March 3, 2020, Marin County declared a local emergency due to the COVID-19; and

WHEREAS, to allow local government bodies to safely conduct public meetings during the COVID-19 pandemic as well as to ensure public access to governmental meetings, the Governor of the State of California issued Executive Orders N-25-20 and N-29-20, which streamlined notice requirements for teleconference meetings under the Ralph M. Brown Act; and

WHEREAS, the Sanitary District No. 5 (“District”) has been conducting meetings of the District Board as well as its Committees pursuant to the provisions of these executive orders since their issuance; and

WHEREAS, the California State Legislature approved and the Governor signed AB 361 into law, which amended the Ralph M. Brown Act to allow local legislative bodies to continue meeting by teleconference during a gubernatorial proclaimed state of emergency if the local legislative body determines, by majority vote, that as a result of the emergency, meeting in person would present imminent risks to the health or safety of attendees (California Government Code section 54953(e)(1)(B)); and

WHEREAS, the State of Emergency remains in effect; and

WHEREAS, COVID-19 continues to threaten the health and lives of District residents; and

WHEREAS, there is scientific consensus that variants of COVID-19, such as the Delta variant, are highly transmissible in indoor settings; and

WHEREAS, in individuals that are vaccinated, breakthrough cases of COVID-19 are becoming increasingly common; and

WHEREAS, AB 361 requires the District to reconsider the circumstances of the emergency and review whether it continues to directly impact the ability of the members to meet safely in person;

NOW, THEREFORE, BE IT RESOLVED that the Board of Directors of the Sanitary District No. 5 does hereby resolve, declare, determine, and order as follows:

SECTION 1. The above recitals are correct and are material to this Resolution and are incorporated into this Resolution as findings of the District Board.

SECTION 2. Pursuant to the requirements of Government Code Section 54953 (e)(3), the District Board makes the following findings:

- A) The District Board has considered the circumstances of the continuing state of emergency;
- B) The state of emergency continues to directly impact the ability of the members and the public to meet safely in person;
- C) Due to COVID-19, holding meetings in person will present imminent risks to the health and safety to attendees; and
- D) The District Board will continue to meet by teleconference in accordance with Government Code section 54953(e).

SECTION 3. The aforementioned findings apply to all Commissions, Committees, or advisory bodies of the District, which are classified as legislative bodies per Government Code Section 54952.

SECTION 4. The District Board will reconsider, not more than every 30 days, the circumstances of the emergency and review whether it continues to directly impact the ability of the members to meet safely in person.

SECTION 5. All portions of this resolution are severable. If an individual component of this resolution is adjudged by a court to be invalid and unenforceable, then the remaining portions will continue in effect.

* * * * *

I hereby certify that the foregoing is a full, true, and correct copy of a resolution duly and regularly passed and adopted by the Board of Directors of Sanitary District No. 5 of Marin County, California, at a meeting thereof duly held on the 21st day of October 2021, by the following vote:


AYES, and in favor thereof, Directors: *RICHARD SNYDER, JOHN CARAPIET, TOM MOODY, CATHERINE BENEDIKTSSON*

NOES, Directors: *NONE*

ABSENT, Directors: *OMAR AQUAS MONTEZ*

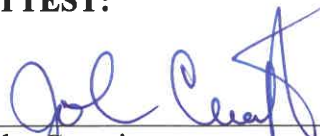
ABSTAIN, Directors: *NONE*

APPROVED:



Richard Snyder
President, Board of Directors

ATTEST:



John Carapiet
Vice President, Board of Directors

John Carapiet, President
Omar Arias-Montez, Vice President
Tod Moody, Secretary

Catharine Benediktsson, Director
Richard Snyder, Director

**Regular Board Meeting Minutes
at Sanitary District No. 5 of Marin County
Thursday, July 21, 2022**

5:00 P.M. REGULAR BOARD MEETING

COVID-19 ADVISORY NOTICE

Consistent with Assembly Bill 361 revising Government Code section 54953, and Resolution No. 2021-07 of this Board enacted in accordance therewith, the Meeting will not be physically open to the public and all Board Members and Staff will be teleconferencing into the meeting.

How to Submit Public Comments:

Comments submitted prior to the commencement of the meeting will be presented to the Board and included in the public record for the meeting.

Public Comments are to be submitted via email to rdohrmann@sani5.org.

In addition, members of the public who are calling in, will have the opportunity to provide public comments by following the steps below:

How to Participate in the Meeting:

Join Zoom Meeting by clicking on the following link:

<https://us02web.zoom.us/j/6230620778>

Meeting ID: 623 062 0778 or join by phone:

Call in number: (669) 900-9128 Participant Code: 623 062 0778

CALL TO ORDER by President Carapiet at 5:00 p.m.

ROLL CALL

Directors present: John Carapiet, President
Omar Arias-Montez, Vice President
Tod Moody, Secretary
Richard Snyder, Director
Catharine Benediktsson, Director

Staff present: Tony Rubio, District Manager
Robin Dohrmann, Office Manager
Jayne Mulloy, Office Assistant
Benjamin Stock, Burke, Williams, & Sorensen, LLC

PUBLIC COMMENTS: The public is invited to address the Board on items that do not appear on the agenda and are within the subject matter jurisdiction of the Board. The Brown Act does not allow the Board to take action on any public comment. Please limit public comments to no more than three minutes.

There were no public comments at this time.

DIRECTORS' COMMENTS AND/OR AGENDA REQUESTS:

There were no Directors' comments or agenda requests by the Board at this time.

CONSENT CALENDAR:

1. Motion to review and affirm Resolution No. 2021-08: A Resolution proclaiming the continuing need to meet by teleconference in accordance with Government Code Section 54953 – Action
2. Approval of June 16, 2022, Regular Board Meeting Minutes and June 30, 2022, Special Board Meeting minutes (Dohrmann/Mulloy)
3. Review and receive all electronic fund transfers (EFTs) and approve warrants from June 10th, 2022, through July 14th, 2022 (JP Morgan Chase Bank, check no. 8986 through check no. 9060, all transactions totaling \$420,699.05) and receive June 2022, payroll, in the sum of \$121,806.43 (Dohrmann)
4. Receipt of Financial Reports for June 2022 (Dohrmann)

Discussion by the Board. Motion (Snyder/Arias-Montez) to approve the Consent Calendar. Minutes approved as corrected. Vote passed (5-0-0-0)

President Carapiet moved to Item No. 7, under New Business, for consideration, as described on the agenda to this time (5:04 p.m.).

7. Approval of Resolution 2022-09, a resolution honoring Timothy James O’Day (Rubio) – Action

Discussion by the Board. Motion (Snyder/Benediktsson) to approve with corrections, Resolution 2022-09, a resolution honoring Timothy James O’Day. Vote passed (5-0-0-0)

President Carapiet moved to Item No. 5, under Management Reports, for consideration, as described on the agenda to this time (5:11 p.m.).

MANAGEMENT REPORTS:

5. Management Summary Report (Rubio)

District Manager, Tony Rubio, presented a written and verbal report on current District issues, responding to questions from the Board. Discussion by the Board.

6. Consideration to approve Resolution 2022-08, a Resolution rejecting all submitted bids for the 2022 Sewer Rehabilitation Project; and that District staff is authorized to re-advertise the Project for bid utilizing the revised specifications prepared by the District Engineer (Rubio) – Action

Discussion by the Board. Motion (Synder/Benediktsson) to approve Resolution 2022-08, a Resolution rejecting all submitted bids for the 2022 Sewer Rehabilitation Project; and that District staff is authorized to re-advertise the Project for bid utilizing the revised specifications prepared by the District Engineer. Vote passed (5-0-0-0)

UNFINISHED BUSINESS: None

COMMITTEE REPORTS:

5. Capital Improvement Program Committee (Arias-Montez/Moody) – Verbal report
6. Finance & Fiscal Oversight Committee (Benediktsson/Arias-Montez) – Verbal report
7. Governance Committee (Moody/Snyder) – N/A
8. Personnel Committee (Snyder/Carapiet) – N/A

OTHER BUSINESS: None

ENVIRONMENTAL:

CORRESPONDENCE:

INFORMATIONAL ITEMS:

ADJOURNMENT

The Board adjourned at 5:40 p.m. Motion (Benediktsson/Moody) to a Regular Board Meeting on August 18, 2022, at 5:00 P.M. Vote passed (5-0-0-0)

Approved:

Attest:

John Carapiet
President, Board of Directors

Omar-Arias Montez
Vice President, Board of Directors

Sanitary Distr. No.5 of Marin Co.
Warrant List Summary
 July 15 through August 15, 2022

08/11/22

Date	Num	Name	Memo	Amount
JP Morgan Chase - Primary 7399				
07/15/22	EFT	CAL PERS 457 Def Comp	7.1.2022 - 7.15.2022	-25,770.00
07/26/22	EFT	PERS	CalPERS Unfunded Accrued Liability (UAL) Lump Sum Payment for ...	-764.00
07/26/22	EFT	PERS	CalPERS Unfunded Accrued Liability (UAL) Lump Sum Payment for ...	-27.92
08/05/22	EFT	PERS	EFT PERS Pension - July 2022	-19,982.31
07/21/22	EFT	CalPERS	EFT Health Premium, Cust #4163206459 - August 2022	-14,156.26
08/05/22	EFT	CalPERS	#4163206459, GASB 68 Actuarial Valuation Report Fees (AJE FY21...	-700.00
07/28/22	EFT	PERS	EFT PERS Spec. Comp./Holiday - 4.4.2022	-104.32
08/11/22	9062	AAAA Generator Services, Inc.	SD5 BPS#1, July 2022	-3,457.76
08/11/22	9063	Access Answering Service	Acct #4080C, Answering Service - August 2022	-66.00
08/11/22	9064	Alameda Electrical Distributors, Inc.	Acct #56156:M.P + P.C. Plant Supplies - July 2022	-1,000.16
08/11/22	9065	Alhambra	Acct #547945611762129, Water - July 2022	-206.28
08/11/22	9066	APG Neuros, Inc.	M.P Maint. Supplies - July 2022	-8,860.00
08/11/22	9067	AT&T	Acct #960732-76375559 - July 2022	-845.08
08/11/22	9068	Bay City Boiler	Acct #274428, M.P. Boiler - July 2022	-6,060.01
08/11/22	9069	BGE Solutions	M.P. Digester gas sample + testing - July 2022	-2,363.80
08/11/22	9070	Brentwood Industries, Inc.	M.P. Parts & Service - Secondary Clarifier Eqpmt - July 2022	-3,500.00
08/11/22	9071	Burke, Williams & Sorensen, LLP	Legal Advice - June 2022 (AJE FY21-22)	-6,687.00
08/11/22	9072	California Association of Sanitatio...	CASA Registration Fee for 2022 Annual Conference - August 2022	-625.00
08/11/22	9073	Caltest Analytical Laboratory	M.P./P.C. Lab Sampling - July 2022	-3,296.50
08/11/22	9074	Central Marin Sanitation Agency	Pollution Prevention Pub Ed Costs - July 2022	-2,011.44
08/11/22	9077	D&K Auto Service	SD5 Truck Maint., April (AJE FY21-22) & July 2022	-1,023.26
08/11/22	9078	DKF Solutions Group, LLC	My Safety Officer Monthly Subscription + OSHA Consult - August 2022	-2,590.00
08/11/22	9079	Fastenal Company	CASA10962, M.P. Supplies, Parts & Service, July 2022	-5,309.63
08/11/22	9080	Frank Olsen Co., LLC	M.P. Digester Rehab Program - July 2022	-1,299.00
08/11/22	9081	Goodman Building Supply Co.	Acct #20070, M.P. & P.C. Supplies + PPE - July 2022	-198.27
08/11/22	9082	Grainger	Acct #810128785, Lab Supplies - July 2022	-187.10
08/11/22	9084	Home Depot Credit Services	M.P. & P.C. Supplies - July 2022	-36.62
08/11/22	9085	Jackson's Hardware, Inc.	Acct #7601, M.P. Supplies & Safety - July 2022	-569.71
08/11/22	9086	JM Integration, LLC	M.P. Parts & Service - July 2022	-9,560.46
08/11/22	9087	Koffler Electrical Mechanical Repair	Cust #00-SAN060, M.P. Parts & Srvc. - July 2022	-4,432.04
08/11/22	9088	Lystek Int'l, LTD	Biosolids Transport - July 2022	-710.57
08/11/22	9089	Marin County Tax Collector	Acct #170796, Cust #21603, LAFCO Service Charges for FY22-23 - ...	-3,606.20
08/11/22	9090	Mill Valley Refuse Service, Inc.	Acct #032945, Garbage Service + 1 yd rental - July 2022	-258.27
08/11/22	9091	National Busines Furniture, LLC	Office Furniture - July 2022	-575.73
08/11/22	9092	NSI Lab Solutions, Inc.	Cust#21528, Lab Chemicals - July 2022	-535.00
08/11/22	9093	Office Depot	Acct #6011 5642 0308 4271,Office + Janitorial Supplies - July 2022	-612.83

Sanitary Distr. No.5 of Marin Co.
Warrant List Summary
 July 15 through August 15, 2022

08/11/22

<u>Date</u>	<u>Num</u>	<u>Name</u>	<u>Memo</u>	<u>Amount</u>
08/11/22	9094	Ongaro & Sons, Inc.	Client #1082, HVAC Repair + (1) BPS Backflow Testing - May (AJE ...	-7,962.20
08/11/22	9095	Owen Equipment Sales	Acct #C10655, SD5 Vactor Truck Service - July 2022	-4,415.80
08/11/22	9096	Roy's Sewer Service, Inc.	P&L, M.P. & PC, Tiburon & Belvedere -July 2022	-5,210.00
08/11/22	9097	Shape Incorporated	Acct #400M14, PCP P&L - July 2022	-2,669.21
08/11/22	9098	Solenis, LLC	Pyr #: 441488, M.P. Chemicals - August 2022	-5,800.67
08/11/22	9099	Town of Tiburon	Fuel - June 2022 (AJE FY21-22)	-2,403.23
08/11/22	9100	U.S. Bank	Acct#: 4246 0470 0067 9545, June (FY21-22AJE) - July 2022	-2,828.34
08/11/22	9101	Underground Service Alert of Nor...	Acct #165410, Annual Fee, 2021+2022, FY22-23 Tickets & CA Fees ...	-1,092.29
08/11/22	9102	USA BlueBook	Cust #933682, M.P. + P.C. Supplies, Lab Supplies & Chemicals - Ju...	-6,069.97
08/11/22	9103	VWR International, LLC	Acct #80012138, Lab Supplies - July 2022	-235.26
08/11/22	9104	Waste Management of Redwood ...	Acct #507-0000190-1507-2, Sludge Disposal - July 2022	-396.70
08/11/22	9105	Water Components & Building Su...	Acct #454, M.P. Supplies - July 2022	-684.32
08/11/22	9106	Bilsborough, Chad	Reimb. for SD5 Public Ed Event @ MC Fair - July 2022	-20.00
08/11/22	9107	Salazar, Ignacio	Reimb. for Safety Boots + PPE/Uniforms - July 2022	-485.00
08/15/22	9110	Alameda Electrical Distributors, Inc.	Cust #56156, M.P. Supplies - August 2022	-5,347.90
08/15/22	9111	Caltronics Business Systems, Inc.	Acct #SD15, Multi-purpose Copier Contract - July 2022	-179.53
08/15/22	9112	Cintas Corporation #626	Acct #626-00821, PPE/Safetywear + Service - July 2022	-181.09
08/15/22	9113	Comcast Business	Acct# 8155 30 011 0149465, Bus. Voice, Internet & Cable, July 2022	-579.38
08/15/22	9114	HDR Engineering, Inc.	Consulting, MCSD5 Staffing Assmnt - Jan - Mar 2022 (AJE FY21-22)	-19,955.95
08/15/22	9115	MidAmerica	Acct#: SD5MARIN0G5, 2022 Rates, Supplemental 2022	-6,505.58
08/15/22	9116	Pacific Gas & Electric	Acct #2908031411-4, Utilities - July 2022	-22,995.67
08/15/22	9117	Special District Risk Management ...	Member #7665, Life, Vision, DDS & LTD Ins. - September 2022	-1,533.42
08/15/22	9118	Verizon Wireless	Acct #0342125502-00001: iPhones & BPS Comm - August 2022	-411.04
08/15/22	9119	Triola, Joseph	Reimb. for SD5 P.C. Parts & SD5 Trucks/Standby Mileage Reimb - J...	-77.83
Total JP Morgan Chase - Primary 7399				-230,028.91
TOTAL				-230,028.91

**Sanitary Distr. No.5 of Marin Co.
Warrant List Detail
July 15 through August 15, 2022**

Date	Num	Name	Memo	Account	Class	Paid Amount
07/15/22	EFT	CAL PERS 457 Def Comp	7.1.2022 - 7.15.2022	JP Morgan Chase - Primary 7399		
			CalPERS 457 ROTH Deferred Comp. (Alvarez) - Pay Period: 7.1.2022 - 7.15.2022	8008 · Deferred Comp 457	Tiburon	-460.00
			SD5 Match / 2022 MOU for J Alvarez - Pay Period: 7.1.2022 - 7.15.2022	8008 · Deferred Comp 457	Tiburon	-460.00
			CalPERS 457 ROTH Deferred Comp. (Dohrmann) - Pay Period: 7.1.2022 - 7.15.2022	8008 · Deferred Comp 457	Tiburon	-450.00
			SD5 Match / 2022 MOU for R Dohrmann - Pay Period: 7.1.2022 - 7.15.2022	8008 · Deferred Comp 457	Tiburon	-450.00
			CalPERS 457 Deferred Comp. (LaTorre) - Pay Period -- 7.1.2022 - 7.15.2022	8008 · Deferred Comp 457	Tiburon	-200.00
			CalPERS 457 ROTH Deferred Comp. (Rosser) - Pay Period -- 6.16.2022 - 6.30.2022	8008 · Deferred Comp 457	Tiburon	-5,250.00
			SD5 Match / 2022 MOU for J Rosser - Pay Period -- 6.16.2022 - 6.30.2022 (FY22-23 Maximum)	8008 · Deferred Comp 457	Tiburon	-5,000.00
			CalPERS 457 ROTH Deferred Comp. (Rubio) - Pay Period -- 6.16.2022 - 6.30.2022	8008 · Deferred Comp 457	Tiburon	-6,000.00
			SD5 Match / 2022 MOU for T Rubio - Pay Period -- 6.16.2022 - 6.30.2022 (FY22-23 Maximum)	8008 · Deferred Comp 457	Tiburon	-5,000.00
			CalPERS 457 Deferred Comp. (Triola) - Pay Period -- 6.16.2022 - 6.30.2022	8008 · Deferred Comp 457	Tiburon	-1,250.00
			SD5 Match / 2022 MOU for J Triola - Pay Period -- 6.16.2022 - 6.30.2022	8008 · Deferred Comp 457	Tiburon	-1,250.00
TOTAL						-25,770.00
07/26/22	EFT	PERS	CalPERS Unfunded Accrued Liability (UAL) Lump Sum Payment for SD5 FY19-20 - Classic Member...	JP Morgan Chase - Primary 7399		
			CalPERS Unfunded Accrued Liability (UAL) Lump Sum Payment for SD5 FY19-20 - Classic Members (16...	8019.08 · PERS Retirement - CalP...	Belvedere	-283.06
			CalPERS Unfunded Accrued Liability (UAL) Lump Sum Payment for SD5 FY19-20 - Classic Members (16...	8019.08 · PERS Retirement - CalP...	Tiburon	-480.94
TOTAL						-764.00
07/26/22	EFT	PERS	CalPERS Unfunded Accrued Liability (UAL) Lump Sum Payment for SD5 FY19-20 - PEPRA Member...	JP Morgan Chase - Primary 7399		
			CalPERS Unfunded Accrued Liability (UAL) Lump Sum Payment for SD5 FY19-20 - PEPRA Members (27...	8019.08 · PERS Retirement - CalP...	Belvedere	-10.34
			CalPERS Unfunded Accrued Liability (UAL) Lump Sum Payment for SD5 FY19-20 - PEPRA Members (27...	8019.08 · PERS Retirement - CalP...	Tiburon	-17.58
TOTAL						-27.92
08/05/22	EFT	PERS	EFT PERS Pension - July 2022	JP Morgan Chase - Primary 7399		
			Retirement July 2022 (Classic 1600 Rate): ER @ 14.020%; EE @ 4.0%	8019.05 · PERS Retirement	Belvedere	-4,928.83
			Retirement July 2022 (Classic 1600 Rate): ER @ 14.020%; EE @ 4.0%	8019.05 · PERS Retirement	Tiburon:Par...	-303.87
			Retirement July 2022 (Classic 1600 Rate): ER @ 14.020%; EE @ 4.0%	8019.05 · PERS Retirement	Tiburon	-6,922.25
			Retirement July 2022 (PEPRA Rates: ER @ 7.590%; EE @ 6.75%	8019.05 · PERS Retirement	Belvedere	-3,173.99
			Retirement July 2022 (PEPRA Rates: ER @ 7.590%; EE @ 6.75%	8019.05 · PERS Retirement	Tiburon:Par...	-195.68
			Retirement July 2022 (PEPRA Rates: ER @ 7.590%; EE @ 6.75%	8019.05 · PERS Retirement	Tiburon	-4,457.69
TOTAL						-19,982.31
07/21/22	EFT	CalPERS	EFT Health Premium, Cust #4163206459 - August 2022	JP Morgan Chase - Primary 7399		
			Active Employee Health Premium - August 2022	8020.05 · Employee Health	Belvedere	-5,352.09
			Active Employee Health Premium - August 2022	8020.05 · Employee Health	Tiburon:Par...	-329.97
			Active Employee Health Premium - August 2022	8020.05 · Employee Health	Tiburon	-7,516.68
			Retiree Health Premium - August 2022	8022.05 · Reitree Health	Belvedere	-362.52
			Retiree Health Premium - August 2022	8022.05 · Reitree Health	Tiburon:Par...	-22.35
			Retiree Health Premium - August 2022	8022.05 · Reitree Health	Tiburon	-509.13
			Active Employee Health Premium - August 2022 - Admin Fee	8020.05 · Employee Health	Belvedere	-17.66
			Active Employee Health Premium - August 2022 - Admin Fee	8020.05 · Employee Health	Tiburon:Par...	-1.09
			Active Employee Health Premium - August 2022 - Admin Fee	8020.05 · Employee Health	Tiburon	-24.81
			Retiree Health Premium - August 2022 - Admin Fee	8022.05 · Reitree Health	Belvedere	-8.09
			Retiree Health Premium - August 2022 - Admin Fee	8022.05 · Reitree Health	Tiburon:Par...	-0.50

08/11/22

Sanitary Distr. No.5 of Marin Co.
Warrant List Detail
 July 15 through August 15, 2022

Date	Num	Name	Memo	Account	Class	Paid Amount
			Retiree Health Premium - August 2022 - Admin Fee	8022.05 · Reitree Health	Tiburon	-11.37
TOTAL						-14,156.26
08/05/22	EFT	CalPERS	#4163206459, GASB 68 Actuarial Valuation Report Fees (AJE FY21-22) - August 2022	JP Morgan Chase - Primary 7399		
			#4163206459, GASB 68 Actuarial Valuation Report Fees - Classic (AJE FY21-22) - August 2022	8019.05 · PERS Retirement	Belvedere	-125.86
			#4163206459, GASB 68 Actuarial Valuation Report Fees - Classic (AJE FY21-22) - August 2022	8019.05 · PERS Retirement	Tiburon:Par...	-10.22
			#4163206459, GASB 68 Actuarial Valuation Report Fees - Classic (AJE FY21-22) - August 2022	8019.05 · PERS Retirement	Tiburon	-213.92
			#4163206459, GASB 68 Actuarial Valuation Report Fees - PEPRA (AJE FY21-22) - August 2022	8019.05 · PERS Retirement	Belvedere	-125.86
			#4163206459, GASB 68 Actuarial Valuation Report Fees - PEPRA (AJE FY21-22) - August 2022	8019.05 · PERS Retirement	Tiburon:Par...	-10.22
			#4163206459, GASB 68 Actuarial Valuation Report Fees - PEPRA (AJE FY21-22) - August 2022	8019.05 · PERS Retirement	Tiburon	-213.92
TOTAL						-700.00
07/28/22	EFT	PERS	EFT PERS Spec. Comp./Holiday - 4.4.2022	JP Morgan Chase - Primary 7399		
			Special Comp/Holiday - C Bilsborough, 4.4.2022 (4th of July)	8019.05 · PERS Retirement	Belvedere	-42.30
			Special Comp/Holiday - C Bilsborough, 4.4.2022 (4th of July)	8019.05 · PERS Retirement	Tiburon:Par...	-2.61
			Special Comp/Holiday - C Bilsborough, 4.4.2022 (4th of July)	8019.05 · PERS Retirement	Tiburon	-59.41
TOTAL						-104.32
08/11/22	9062	AAAA Generator Service...	SD5 BPS#1, July 2022	JP Morgan Chase - Primary 7399		
			Inv #52498 (PO#160294), BPS #1 generator service - July 2022	7022 · Plant Maint. Parts & Service	Belvedere	-3,457.76
TOTAL						-3,457.76
08/11/22	9063	Access Answering Service	Acct #4080C, Answering Service - August 2022	JP Morgan Chase - Primary 7399		
			Inv #27948, Answering Service, August 2022 - SSO & Alarm Notifications	8510 · Data/Alarms/IT Supp & Lice...	Belvedere	-26.76
			Inv #27948, Answering Service, August 2022 - SSO & Alarm Notifications	8510 · Data/Alarms/IT Supp & Lice...	Tiburon:Par...	-1.65
			Inv #27948, Answering Service, August 2022 - SSO & Alarm Notifications	8510 · Data/Alarms/IT Supp & Lice...	Tiburon	-37.59
TOTAL						-66.00
08/11/22	9064	Alameda Electrical Distri...	Acct #56156:M.P + P.C. Plant Supplies - July 2022	JP Morgan Chase - Primary 7399		
			Inv #S5380134.001, #S5380090.001 (PO#753069), Inv#S5380090.002 (PO#753069), M.P. supplies - July...	7021 · Plant Maintenance Supplies	Belvedere	-310.87
			Inv #S5362246.005 (PO#954074), Inv#S5380090.002 (PO#753069), P.C.Supplies - July 2022	7041 · Paradise Parts & Service	Tiburon:Par...	-251.32
			Inv #S5380134.001, #S5380090.001 (PO#753069), Inv#S5380090.002 (PO#753069), M.P. supplies - Jul...	7021 · Plant Maintenance Supplies	Tiburon	-437.97
TOTAL						-1,000.16
08/11/22	9065	Alhambra	Acct #547945611762129, Water - July 2022	JP Morgan Chase - Primary 7399		
			Inv #12012314 072222, Water, thru 7.20.2022 - July 2022	7023 · Janitorial Supplies & Service	Belvedere	-83.65
			Inv #12012314 072222, Water, thru 7.20.2022 - July 2022	7042 · Paradise Supplies & Chemic...	Tiburon:Par...	-5.16
			Inv #12012314 072222, Water, thru 7.20.2022 - July 2022	7023 · Janitorial Supplies & Service	Tiburon	-117.47
TOTAL						-206.28

**Sanitary Distr. No.5 of Marin Co.
Warrant List Detail
July 15 through August 15, 2022**

08/11/22

Date	Num	Name	Memo	Account	Class	Paid Amount
08/11/22	9066	APG Neuros, Inc.	M.P Maint. Supplies - July 2022	JP Morgan Chase - Primary 7399		
			Inv #15940 (PO#954161), M.P. - Regular Routine Maintenance (thru FY27-28)	7021 · Plant Maintenance Supplies	Belvedere	-3,676.90
			Inv #15940 (PO#954161), M.P. - Regular Routine Maintenance (thru FY27-28)	7021 · Plant Maintenance Supplies	Tiburon	-5,183.10
			TOTAL			-8,860.00
08/11/22	9067	AT&T	Acct #960732-76375559 - July 2022	JP Morgan Chase - Primary 7399		
			PC Plant Telephones - July 2022	8532 · Paradise Cove Telephones	Tiburon:Par...	-522.81
			PC Pumps & Lines Telephones - July 2022	8533 · Pumps & Lines Telephones	Tiburon:Par...	-8.27
			Tib Pumps & Lines Telephones - July 2022	8533 · Pumps & Lines Telephones	Tiburon	-314.00
			TOTAL			-845.08
08/11/22	9068	Bay City Boiler	Acct #274428, M.P. Boiler - July 2022	JP Morgan Chase - Primary 7399		
			Inv #W20177 (PO#160298), M.P. (reset) service call - July 2022	7022 · Plant Maint. Parts & Service	Belvedere	-2,411.29
			Inv #W20177 (PO#160298), M.P. (reset) service call - July 2022	7022 · Plant Maint. Parts & Service	Tiburon:Par...	-3,399.04
			Inv #W20316 (PO#160288), M.P. Supplies - July 2022	7021 · Plant Maintenance Supplies	Belvedere	-103.62
			Inv #W20316 (PO#160288), M.P. Supplies - July 2022	7021 · Plant Maintenance Supplies	Tiburon	-146.06
			TOTAL			-6,060.01
08/11/22	9069	BGE Solutions	M.P. Digester gas sample + testing - July 2022	JP Morgan Chase - Primary 7399		
			Inv #206 (PO#160269), M.P. Digester gas sample + testing - July 2022	7022 · Plant Maint. Parts & Service	Belvedere	-980.98
			Inv #206 (PO#160269), M.P. Digester gas sample + testing - July 2022	7022 · Plant Maint. Parts & Service	Tiburon	-1,382.82
			TOTAL			-2,363.80
08/11/22	9070	Brentwood Industries, Inc.	M.P. Parts & Service - Secondary Clarifier Eqpmt - July 2022	JP Morgan Chase - Primary 7399		
			WGI000012051 (PO#954117), M.P. Clairifiers, HS/SS Squeegees - July 2022	7022 · Plant Maint. Parts & Service	Belvedere	-1,452.50
			WGI000012051 (PO#954117), M.P. Clairifiers, HS/SS Squeegees - July 2022	7022 · Plant Maint. Parts & Service	Tiburon	-2,047.50
			TOTAL			-3,500.00
08/11/22	9071	Burke, Williams & Soren...	Legal Advice - June 2022 (AJE FY21-22)	JP Morgan Chase - Primary 7399		
			Inv #287170, DCS - June 2022 (AJE FY21-22)	6039 · Legal	Belvedere	-385.13
			Inv #287170, DCS - June 2022 (AJE FY21-22)	6039 · Legal	Tiburon:Par...	-31.27
			Inv #287170, DCS - June 2022 (AJE FY21-22)	6039 · Legal	Tiburon	-654.60
			Inv #287170, HR - June 2022 (AJE FY21-22)	6039 · Legal	Belvedere	-972.53
			Inv #287170, HR - June 2022 (AJE FY21-22)	6039 · Legal	Tiburon:Par...	-78.97
			Inv #287170, HR - June 2022 (AJE FY21-22)	6039 · Legal	Tiburon	-1,652.99
			Inv #287170, T-B SRP - June 2022 (AJE FY21-22)	6039 · Legal	Belvedere	-1,046.98
			Inv #287170, T-B SRP - June 2022 (AJE FY21-22)	6039 · Legal	Tiburon:Par...	-85.02
			Inv #287170, T-B SRP - June 2022 (AJE FY21-22)	6039 · Legal	Belvedere	-1,779.51
			TOTAL			-6,687.00
08/11/22	9072	California Association of...	CASA Registration Fee for 2022 Annual Conference - August 2022	JP Morgan Chase - Primary 7399		

**Sanitary Distr. No.5 of Marin Co.
Warrant List Detail
July 15 through August 15, 2022**

08/11/22

Date	Num	Name	Memo	Account	Class	Paid Amount
			CASA Registration Fee for 2022 Annual Conference - 8.10.2022 - 8.12.2022	6025 · Dues & Subscriptions	Belvedere	-253.44
			CASA Registration Fee for 2022 Annual Conference - 8.10.2022 - 8.12.2022	6025 · Dues & Subscriptions	Tiburon:Par...	-15.63
			CASA Registration Fee for 2022 Annual Conference - 8.10.2022 - 8.12.2022	6025 · Dues & Subscriptions	Tiburon	-355.93
		TOTAL				-625.00
08/11/22	9073	Caltest Analytical Labora...	M.P./P.C. Lab Sampling - July 2022	JP Morgan Chase - Primary 7399		
			M.P. - B: #635098, #634889, #634528, #634770, #634590, #635155 - July 2022	7051 · Main Plant Lab Monitoring	Belvedere	-804.27
			P.C.: #634945, #63486, #635153, #635154 - July 2022	7052 · Paradise Cove Monitoring	Tiburon:Par...	-1,358.50
			M.P. - T: #635098, #634889, #634528, #634770, #634590, #635155 - July 2022	7051 · Main Plant Lab Monitoring	Tiburon	-1,133.73
		TOTAL				-3,296.50
08/11/22	9074	Central Marin Sanitation ...	Pollution Prevention Pub Ed Costs - July 2022	JP Morgan Chase - Primary 7399		
			Inv #00700, Shared Pollution Prevention Public Education Budget Costs, 7.1.22 - 06.30.2023	6059 · Pollution Prevention/Public E...	Belvedere	-815.62
			Inv #00700, Shared Pollution Prevention Public Education Budget Costs, 7.1.22 - 06.30.2023	6059 · Pollution Prevention/Public E...	Tiburon:Par...	-50.29
			Inv #00700, Shared Pollution Prevention Public Education Budget Costs, 7.1.22 - 06.30.2023	6059 · Pollution Prevention/Public E...	Tiburon	-1,145.53
		TOTAL				-2,011.44
08/11/22	9077	D&K Auto Service	SD5 Truck Maint., April (AJE FY21-22) & July 2022	JP Morgan Chase - Primary 7399		
			Inv #71123 (PO#160299) -- 2013 Ford F-250Super Duty XLT, Repair/Maintenance - April 2022 (AJE F...	7072 · Maintenance	Belvedere	-126.05
			Inv #71123 (PO#160299) -- 2013 Ford F-250Super Duty XLT, Repair/Maintenance - April 2022 (AJE F...	7072 · Maintenance	Tiburon:Par...	-10.24
			Inv #71123 (PO#160299) -- 2013 Ford F-250Super Duty XLT, Repair/Maintenance - April 2022 (AJE F...	7072 · Maintenance	Tiburon	-214.23
			Inv #71963 (PO#160289) -- 2005 Chevy Silverado 2500 HD, Repair/Maintenance - July 2022	7072 · Maintenance	Belvedere	-272.80
			Inv #71963 (PO#160289) -- 2005 Chevy Silverado 2500 HD, Repair/Maintenance - July 2022	7072 · Maintenance	Tiburon:Par...	-16.82
			Inv #71963 (PO#160289) -- 2005 Chevy Silverado 2500 HD, Repair/Maintenance - July 2022	7072 · Maintenance	Tiburon	-383.12
		TOTAL				-1,023.26
08/11/22	9078	DKF Solutions Group, LLC	My Safety Officer Monthly Subscription + OSHA Consult - August 2022	JP Morgan Chase - Primary 7399		
			Inv #20580, CalOSHA Training Requirements - August 2022	8515 · Safety	Belvedere	-908.32
			Inv #20580, CalOSHA Training Requirements - August 2022	8515 · Safety	Tiburon:Par...	-56.00
			Inv #20580, CalOSHA Training Requirements - August 2022	8515 · Safety	Tiburon	-1,275.69
			Inv #20682, My Safety Officer Monthly Subscription Fee - August 2022	8515 · Safety	Belvedere	-141.93
			Inv #20682, My Safety Officer Monthly Subscription Fee - August 2022	8515 · Safety	Tiburon:Par...	-8.75
			Inv #20682, My Safety Officer Monthly Subscription Fee - August 2022	8515 · Safety	Tiburon	-199.31
		TOTAL				-2,590.00
08/11/22	9079	Fastenal Company	CASA10962, M.P. Supplies, Parts & Service, July 2022	JP Morgan Chase - Primary 7399		
			Inv #CAPET62255 & CAPET62278 (PO#160282) - M.P. Supplies - July 2022	7021 · Plant Maintenance Supplies	Belvedere	-212.77
			Inv #CAPET62255 & CAPET62278 (PO#160282) - M.P. Supplies - July 2022	7021 · Plant Maintenance Supplies	Tiburon	-299.92
			Inv #CAPET62023+ #CAPET62256(PO#160256) - M.P. Supplies - July 2022	7021 · Plant Maintenance Supplies	Belvedere	-1,082.59
			Inv #CAPET62023+ #CAPET62256(PO#160256) - M.P. Supplies - July 2022	7021 · Plant Maintenance Supplies	Tiburon	-1,526.07
			Inv #CAPET62081 (PO#160265) - M.P. Supplies - July 2022	7021 · Plant Maintenance Supplies	Belvedere	-511.61
			Inv #CAPET62081 (PO#160265) - M.P. Supplies - July 2022	7021 · Plant Maintenance Supplies	Tiburon	-721.18
			Inv #CAPET62083, #CAPET62254, #CAPET#62277 (PO#160273) - M.P. Supplies - July 2022	7021 · Plant Maintenance Supplies	Belvedere	-375.27

Sanitary Distr. No.5 of Marin Co.
Warrant List Detail
 July 15 through August 15, 2022

08/11/22

Date	Num	Name	Memo	Account	Class	Paid Amount
			Inv #CAPET62083, #CAPET62254, #CAPET#62277 (PO#160273) - M.P. Supplies - July 2022	7021 · Plant Maintenance Supplies	Tiburon	-529.00
			Inv #CAPET62022 (PO#954148) - M.P. Supplies - July 2022	7021 · Plant Maintenance Supplies	Belvedere	-21.26
			Inv #CAPET62022 (PO#954148) - M.P. Supplies - July 2022	7021 · Plant Maintenance Supplies	Tiburon	-29.96
		TOTAL				-5,309.63
08/11/22	9080	Frank Olsen Co., LLC	M.P. Digester Rehab Program - July 2022	JP Morgan Chase - Primary 7399		
			Inv #249.77 (PO#160872), P&L Pumps & Valves Rpcmnt - July 2022	9213.1 · Digester Roof Rehab	Belvedere	-539.09
			Inv #249.77 (PO#160872), P&L Pumps & Valves Rpcmnt - July 2022	9213.1 · Digester Roof Rehab	Tiburon	-759.91
		TOTAL				-1,299.00
08/11/22	9081	Goodman Building Suppl...	Acct #20070, M.P. & P.C. Supplies + PPE - July 2022	JP Morgan Chase - Primary 7399		
			Inv #852058 (PO#160295) - M.P. Supplies - July 2022	7021 · Plant Maintenance Supplies	Belvedere	-23.04
			Inv #852058 (PO#160295) - M.P. Supplies - July 2022	7042 · Paradise Supplies & Chemic...	Tiburon:Par...	-1.42
			Inv #852058 (PO#160295) - M.P. Supplies - July 2022	7021 · Plant Maintenance Supplies	Tiburon	-32.35
			Inv #851243 (PO#160280) - Safety/PPE for new SD5 EE	8515 · Safety	Belvedere	-57.36
			Inv #851243 (PO#160280) - Safety/PPE for new SD5 EE	8515 · Safety	Tiburon:Par...	-3.54
			Inv #851243 (PO#160280) - Safety/PPE for new SD5 EE	8515 · Safety	Tiburon	-80.56
		TOTAL				-198.27
08/11/22	9082	Grainger	Acct #810128785, Lab Supplies - July 2022	JP Morgan Chase - Primary 7399		
			Inv #9345080015 (PO#753062), M.P. Supplies - July 2022	7021 · Plant Maintenance Supplies	Belvedere	-77.65
			Inv #9345080015 (PO#753062), M.P. Supplies - July 2022	7021 · Plant Maintenance Supplies	Tiburon	-109.45
		TOTAL				-187.10
08/11/22	9084	Home Depot Credit Servi...	M.P. & P.C. Supplies - July 2022	JP Morgan Chase - Primary 7399		
			Inv #1012536 (PO#106271), M.P. Supplies - July 2022	7022 · Plant Maint. Parts & Service	Belvedere	-14.85
			Inv #1012536 (PO#106271), M.P. Supplies - July 2022	7041 · Paradise Parts & Service	Tiburon	-0.92
			Inv #1012536 (PO#106271), M.P. Supplies - July 2022	7022 · Plant Maint. Parts & Service	Belvedere	-20.85
		TOTAL				-36.62
08/11/22	9085	Jackson's Hardware, Inc.	Acct #7601, M.P. Supplies & Safety - July 2022	JP Morgan Chase - Primary 7399		
			Inv #109542 (PO#160279) - Safety Gear - July 2022	8515 · Safety	Belvedere	-74.68
			Inv #109542 (PO#160279) - Safety Gear - July 2022	8515 · Safety	Tiburon:Par...	-4.60
			Inv #109542 (PO#160279) - Safety Gear - July 2022	8515 · Safety	Tiburon	-104.89
			Inv #1101146 (PO#954079 - IS), Safety Boots - July 2022	8515 · Safety	Belvedere	-70.97
			Inv #1101146 (PO#954079 - IS), Safety Boots - July 2022	8515 · Safety	Tiburon:Par...	-4.38
			Inv #1101146 (PO#954079 - IS), Safety Boots - July 2022	8515 · Safety	Tiburon	-99.67
			Inv #109428 (PO#160279 - IS), PPE - July 2022	8520 · Personal Protection/Safety ...	Belvedere	-72.67
			Inv #109428 (PO#160279 - IS), PPE - July 2022	8520 · Personal Protection/Safety ...	Tiburon:Par...	-4.48
			Inv #109428 (PO#160279 - IS), PPE - July 2022	8520 · Personal Protection/Safety ...	Tiburon	-102.07
			Inv #109542 (PO#954078). M.P. supplies - July 2022	7021 · Plant Maintenance Supplies	Belvedere	-12.99
			Inv #109542 (PO#954078). M.P. supplies - July 2022	7021 · Plant Maintenance Supplies	Tiburon	-18.31

08/11/22

**Sanitary Distr. No.5 of Marin Co.
Warrant List Detail
July 15 through August 15, 2022**

Date	Num	Name	Memo	Account	Class	Paid Amount
TOTAL						-569.71
08/11/22	9086	JM Integration, LLC	M.P. Parts & Service - July 2022	JP Morgan Chase - Primary 7399		
			Inv #22162 (PO#954202): Bi-weekly maintenance: Flowlines, sludge pit transmitter + conduit insta...	7022 · Plant Maint. Parts & Service	Belvedere	-930.41
			Inv #22162 (PO#954202): Bi-weekly maintenance: Flowlines, sludge pit transmitter + conduit insta...	7022 · Plant Maint. Parts & Service	Tiburon	-1,311.55
			Inv #22169 (PO#160300): M.P. SO3 Pump Replacement - July 2022	7022 · Plant Maint. Parts & Service	Belvedere	-1,971.67
			Inv #22169 (PO#160300): M.P. SO3 Pump Replacement - July 2022	7022 · Plant Maint. Parts & Service	Tiburon	-2,779.33
			Inv #2217 (PO#954203): M.P Annual Calibrations - July 2022	7022 · Plant Maint. Parts & Service	Belvedere	-1,065.51
			Inv #2217 (PO#954203): M.P Annual Calibrations - July 2022	7022 · Plant Maint. Parts & Service	Tiburon	-1,501.99
TOTAL						-9,560.46
08/11/22	9087	Koffler Electrical Mechan...	Cust #00-SAN060, M.P. Parts & Srv. - July 2022	JP Morgan Chase - Primary 7399		
			Inv #0100867-IN (PO#753066), 2 HP for M.P. - July 2022	7022 · Plant Maint. Parts & Service	Belvedere	-419.50
			Inv #0100867-IN (PO#753066), 2 HP for M.P. - July 2022	7022 · Plant Maint. Parts & Service	Tiburon	-591.35
			Inv #0100868-IN (PO#753066), 7.5 HP for M.P. - July 2022	7022 · Plant Maint. Parts & Service	Belvedere	-356.10
			Inv #0100868-IN (PO#753066), 7.5 HP for M.P. - July 2022	7022 · Plant Maint. Parts & Service	Tiburon	-501.97
			Inv #0100869-IN (PO#753066), 10 HP for M.P. - July 2022	7022 · Plant Maint. Parts & Service	Belvedere	-422.72
			Inv #0100869-IN (PO#753066), 10 HP for M.P. - July 2022	7022 · Plant Maint. Parts & Service	Tiburon	-595.88
			Inv #0100871-IN (PO#753066), 0.75 HP for M.P. - July 2022	7022 · Plant Maint. Parts & Service	Belvedere	-356.10
			Inv #0100871-IN (PO#753066), 0.75 HP for M.P. - July 2022	7022 · Plant Maint. Parts & Service	Tiburon	-501.97
			Inv #0100190-IN (PO#753067), 5 HP for M.P. - July 2022	7022 · Plant Maint. Parts & Service	Belvedere	-284.88
			Inv #0100190-IN (PO#753067), 5 HP for M.P. - July 2022	7022 · Plant Maint. Parts & Service	Tiburon	-401.57
TOTAL						-4,432.04
08/11/22	9088	Lystek Int'l, LTD	Biosolids Transport - July 2022	JP Morgan Chase - Primary 7399		
			Inv #153-560, Biosolids Transport to Lystek Facility (8.02 tns) - July 2022	7029 · Main Plant Sludge Disposal	Belvedere	-294.89
			Inv #153-560, Biosolids Transport to Lystek Facility (8.02 tns) - July 2022	7029 · Main Plant Sludge Disposal	Tiburon	-415.68
TOTAL						-710.57
08/11/22	9089	Marin County Tax Collect...	Acct #170796, Cust #21603, LAFCO Service Charges for FY22-23 - August 2022	JP Morgan Chase - Primary 7399		
			Acct #170796, Cust #21603, LAFCO Service Charges for FY22-23	6021 · County Fees	Belvedere	-1,462.31
			Acct #170796, Cust #21603, LAFCO Service Charges for FY22-23	6021 · County Fees	Tiburon:Par...	-90.16
			Acct #170796, Cust #21603, LAFCO Service Charges for FY22-23	6021 · County Fees	Tiburon	-2,053.73
TOTAL						-3,606.20
08/11/22	9090	Mill Valley Refuse Servic...	Acct #032945, Garbage Service + 1 yd rental - July 2022	JP Morgan Chase - Primary 7399		
			Garbage Service, Including 1 yd trash + 1 yd cardboard rental - July 2022	7023 · Janitorial Supplies & Service	Belvedere	-107.18
			Garbage Service, Including 1 yd trash + 1 yd cardboard rental - July 2022	7023 · Janitorial Supplies & Service	Tiburon	-151.09
TOTAL						-258.27
08/11/22	9091	National Busines Furnitu...	Office Furniture - July 2022	JP Morgan Chase - Primary 7399		
			Inv #MK580159-TDQ, File pedestal (grey) - July 2022	6047 · Office Supplies	Belvedere	-233.46

Sanitary Distr. No.5 of Marin Co.
Warrant List Detail
 July 15 through August 15, 2022

08/11/22

Date	Num	Name	Memo	Account	Class	Paid Amount
			Inv #MK580159-TDQ, File pedestal (grey) - July 2022	6047 · Office Supplies	Tiburon:Par...	-14.39
			Inv #MK580159-TDQ, File pedestal (grey) - July 2022	6047 · Office Supplies	Tiburon	-327.88
TOTAL						-575.73
08/11/22	9092	NSI Lab Solutions, Inc.	Cust#21528, Lab Chemicals - July 2022	JP Morgan Chase - Primary 7399		
			Inv #408199 (PO#160285), Lab Chemicals, 6 cases @ 24 Ampules Chlorine Conc, 1.00 mg/L - July 2022	7025 · Lab Supplies & Chemicals	Belvedere	-222.03
			Inv #408199 (PO#160285), Lab Chemicals, 6 cases @ 24 Ampules Chlorine Conc, 1.00 mg/L - July 2022	7025 · Lab Supplies & Chemicals	Tiburon	-312.97
TOTAL						-535.00
08/11/22	9093	Office Depot	Acct #6011 5642 0308 4271,Office + Janitorial Supplies - July 2022	JP Morgan Chase - Primary 7399		
			Inv #253332991-001, Janitorial Supplies - July 2022	7023 · Janitorial Supplies & Service	Belvedere	-228.64
			Inv #253332991-001, Janitorial Supplies - July 2022	7023 · Janitorial Supplies & Service	Tiburon	-322.31
			Administrative/ In-store misc. purchases - July 2022	6047 · Office Supplies	Belvedere	-25.09
			Administrative/ In-store misc. purchases - July 2022	6047 · Office Supplies	Tiburon:Par...	-1.55
			Administrative/ In-store misc. purchases - July 2022	6047 · Office Supplies	Tiburon	-35.24
TOTAL						-612.83
08/11/22	9094	Ongaro & Sons, Inc.	Client #1082, HVAC Repair + (1) BPS Backflow Testing - May (AJE FY21-22) + July 2022	JP Morgan Chase - Primary 7399		
			Inv #120418 (PO#954204) re M.P. HVAC Repair for heating + A/C - July 2022	7022 · Plant Maint. Parts & Service	Belvedere	-1,598.39
			Inv #120418 (PO#954204) re M.P. HVAC Repair for heating + A/C - July 2022	7022 · Plant Maint. Parts & Service	Tiburon	-2,253.16
			Inv #112806 (PO#954081) re BPS #1 BFPD testing & replacement - May 2022 (AJE FY21-22)	7011 · Pumps & Lines Maintenance	Belvedere	-4,110.65
TOTAL						-7,962.20
08/11/22	9095	Owen Equipment Sales	Acct #C10655, SD5 Vactor Truck Service - July 2022	JP Morgan Chase - Primary 7399		
			W.O. #0007744 (PO# 753073), Vactor Truck Service - July 2022	9227.8 · Rodder/Vactor Truck	Belvedere	-1,790.61
			W.O. #0007744 (PO# 753073), Vactor Truck Service - July 2022	9227.8 · Rodder/Vactor Truck	Tiburon:Par...	-110.40
			W.O. #0007744 (PO# 753073), Vactor Truck Service - July 2022	9227.8 · Rodder/Vactor Truck	Tiburon	-2,514.79
TOTAL						-4,415.80
08/11/22	9096	Roy's Sewer Service, Inc.	P&L, M.P. & PC, Tiburon & Belvedere -July 2022	JP Morgan Chase - Primary 7399		
			Inv #217747 @ 54 Alcatraz Ave., Tiburon - cleared line of baby wipes and roots as directed, 7.25...	7011 · Pumps & Lines Maintenance	Tiburon	-180.00
			Inv #217954 @ PC / MP - Cleaned chamber, transported to M.P., 7.14.2022	7043 · Paradise Sludge Disposal	Tiburon:Par...	-1,060.00
			Inv #217955 @ Centro West St, Tiburon - cleared line of roots w/ SD5 DL, 7.14.2022	7011 · Pumps & Lines Maintenance	Tiburon	-975.00
			Inv #217966 @ Lyrford Dr., Tiburon - cleared 8" sewer main, as directed by DL, 7.18.2022	7011 · Pumps & Lines Maintenance	Tiburon	-875.00
			Inv #218061 @ PC / MP - Cleaned chamber, transported to M.P., 7.25.2022	7043 · Paradise Sludge Disposal	Tiburon:Par...	-2,120.00
TOTAL						-5,210.00
08/11/22	9097	Shape Incorporated	Acct #400M14, PCP P&L - July 2022	JP Morgan Chase - Primary 7399		
			Inv #1295 (PO#7053063) Parts to rebuild Seafirth PS#2 - July 2022	9306 · PS Pump & Valve Replacem...	Tiburon:Par...	-2,669.21
TOTAL						-2,669.21

Sanitary Distr. No.5 of Marin Co.
Warrant List Detail
 July 15 through August 15, 2022

08/11/22

Date	Num	Name	Memo	Account	Class	Paid Amount
08/11/22	9098	Solenis, LLC	Pyr #: 441488, M.P. Chemicals - August 2022	JP Morgan Chase - Primary 7399		
			Inv #132097117 (PO#183625), M.P. Maint, Chemicals - Praestol (\$2.11 / lb.) for Screwpress & Rota...	7024 · Main Plant Chemicals	Belvedere	-2,407.28
			Inv #132097117 (PO#183625), M.P. Maint, Chemicals - Praestol (\$2.11 / lb.) for Screwpress & Rota...	7024 · Main Plant Chemicals	Tiburon	-3,393.39
TOTAL						-5,800.67
08/11/22	9099	Town of Tiburon	Fuel - June 2022 (AJE FY21-22)	JP Morgan Chase - Primary 7399		
			Fuel - June 2022 (AJE FY21-22)	7071 · Fuel	Belvedere	-864.20
			Fuel - June 2022 (AJE FY21-22)	7071 · Fuel	Tiburon:Par...	-70.17
			Fuel - June 2022 (AJE FY21-22)	7071 · Fuel	Tiburon	-1,468.86
TOTAL						-2,403.23
08/11/22	9100	U.S. Bank	Acct#: 4246 0470 0067 9545, June (FY21-22AJE) - July 2022	JP Morgan Chase - Primary 7399		
			Zoom Platform re SD5 Meetings - July 2022	6018.1 · Meetings & Travel	Belvedere	-43.68
			Zoom Platform re SD5 Meetings - July 2022	6018.1 · Meetings & Travel	Tiburon:Par...	-2.70
			Zoom Platform re SD5 Meetings - July 2022	6018.1 · Meetings & Travel	Tiburon	-61.33
			Lab Procedure/instruction/Amazon (AJE FY21-22)	6020 · Continuing Education	Belvedere	-64.43
			Lab Procedure/instruction/Amazon (AJE FY21-22)	6020 · Continuing Education	Tiburon:Par...	-5.23
			Lab Procedure/instruction/Amazon (AJE FY21-22)	6020 · Continuing Education	Tiburon	-109.51
			Lab Procedure/instruction/Amazon - July 2022	6020 · Continuing Education	Belvedere	-44.54
			Lab Procedure/instruction/Amazon - July 2022	6020 · Continuing Education	Tiburon:Par...	-2.75
			Lab Procedure/instruction/Amazon - July 2022	6020 · Continuing Education	Tiburon	-62.55
			Office supplies/Amazon (AJE FY21-22)	6047 · Office Supplies	Belvedere	-7.30
			Office supplies/Amazon (AJE FY21-22)	6047 · Office Supplies	Tiburon:Par...	-0.59
			Office supplies/Amazon (AJE FY21-22)	6047 · Office Supplies	Tiburon	-12.41
			USPO Return-Receipt postage (AJE FY21-22)	6056 · Postage	Belvedere	-1.05
			USPO Return-Receipt postage (AJE FY21-22)	6056 · Postage	Tiburon:Par...	-0.09
			USPO Return-Receipt postage (AJE FY21-22)	6056 · Postage	Tiburon	-1.78
			USPO Return-Receipt postage - July 2022	6056 · Postage	Belvedere	-1.54
			USPO Return-Receipt postage - July 2022	6056 · Postage	Tiburon:Par...	-0.10
			USPO Return-Receipt postage - July 2022	6056 · Postage	Tiburon	-2.17
			Plant Supplies/Amazon (AJE FY21-22)	7021 · Plant Maintenance Supplies	Belvedere	-14.76
			Plant Supplies/Amazon (AJE FY21-22)	7021 · Plant Maintenance Supplies	Tiburon	-25.09
			TP/Amazon (AJE FY21-22)	7023 · Janitorial Supplies & Service	Belvedere	-8.22
			TP/Amazon (AJE FY21-22)	7023 · Janitorial Supplies & Service	Tiburon	-13.97
			TP/Amazon - July 2022	7023 · Janitorial Supplies & Service	Belvedere	-17.88
			TP/Amazon - July 2022	7023 · Janitorial Supplies & Service	Tiburon	-25.20
			Lab supplies/Amazon (AJE FY21-22)	7025 · Lab Supplies & Chemicals	Belvedere	-118.00
			Lab supplies/Amazon (AJE FY21-22)	7025 · Lab Supplies & Chemicals	Tiburon	-200.50
			Lab supplies/Amazon - July 2022	7025 · Lab Supplies & Chemicals	Belvedere	-15.76
			Lab supplies/Amazon - July 2022	7025 · Lab Supplies & Chemicals	Tiburon	-22.21
			VW TDI Maintenance - July 2022	7072 · Maintenance	Belvedere	-233.16
			VW TDI Maintenance - July 2022	7072 · Maintenance	Tiburon:Par...	-14.38
			VW TDI Maintenance - July 2022	7072 · Maintenance	Tiburon	-327.46
			Disinfectant + Masterlocks - July 2022	8515 · Safety	Belvedere	-554.72
			Disinfectant + Masterlocks - July 2022	8515 · Safety	Tiburon:Par...	-34.20
			Disinfectant + Masterlocks - July 2022	8515 · Safety	Tiburon	-779.08
TOTAL						-2,828.34

08/11/22

Sanitary Distr. No.5 of Marin Co.
Warrant List Detail
 July 15 through August 15, 2022

Date	Num	Name	Memo	Account	Class	Paid Amount
08/11/22	9101	Underground Service Ale...	Acct #165410, Annual Fee, 2021+2022, FY22-23 Tickets & CA Fees - July 2022	JP Morgan Chase - Primary 7399		
			Inv #2022165410, Annual Dues, based on # of tickets (508) SD5 req'd in 2021+2022 - July 2022	7011 · Pumps & Lines Maintenance	Belvedere	-318.09
			Inv #2022165410, Annual Dues, based on # of tickets (508) SD5 req'd in 2021+2022 - July 2022	7011 · Pumps & Lines Maintenance	Tiburon:Par...	-19.61
			Inv #2022165410, Annual Dues, based on # of tickets (508) SD5 req'd in 2021+2022 - July 2022	7011 · Pumps & Lines Maintenance	Tiburon	-446.74
			Inv #165410USB22, Annual Dues for CA State Regulatory Costs FY22-23 - July 2022	7011 · Pumps & Lines Maintenance	Belvedere	-124.83
			Inv #165410USB22, Annual Dues for CA State Regulatory Costs FY22-23 - July 2022	7011 · Pumps & Lines Maintenance	Tiburon:Par...	-7.70
			Inv #165410USB22, Annual Dues for CA State Regulatory Costs FY22-23 - July 2022	7011 · Pumps & Lines Maintenance	Tiburon	-175.32
TOTAL						-1,092.29
08/11/22	9102	USA BlueBook	Cust #933682, M.P. + P.C. Supplies, Lab Supplies & Chemicals - June (AJE FY21-22) + July 2022	JP Morgan Chase - Primary 7399		
			Inv #050371 (PO#954142), Inv #052293 (PO#160290) M.P. Supplies - July 2022	7021 · Plant Maintenance Supplies	Belvedere	-228.23
			Inv #050371 (PO#954142), Inv #052293 (PO#160290) M.P. Supplies - July 2022	7021 · Plant Maintenance Supplies	Tiburon	-321.73
			Inv #039941, #039693 (PO#160274), P&L Odor Blocks - July 2022	7011 · Pumps & Lines Maintenance	Belvedere	-1,256.34
			Inv #039941, #039693 (PO#160274), P&L Odor Blocks - July 2022	7011 · Pumps & Lines Maintenance	Tiburon:Par...	-77.46
			Inv #039941, #039693 (PO#160274), P&L Odor Blocks - July 2022	7011 · Pumps & Lines Maintenance	Tiburon	-1,764.44
			Inv #030349 (PO#160507) Lab supplies & Checmicals - July 2022	7025 · Lab Supplies & Chemicals	Belvedere	-85.72
			Inv #030349 (PO#160507) Lab supplies & Checmicals - July 2022	7025 · Lab Supplies & Chemicals	Tiburon	-120.83
			Inv #039732, #039945 (PO#160275), Safety: Latex Gloves - July 2022	8515 · Safety	Belvedere	-492.36
			Inv #039732, #039945 (PO#160275), Safety: Latex Gloves - July 2022	8515 · Safety	Tiburon:Par...	-30.36
			Inv #039732, #039945 (PO#160275), Safety: Latex Gloves - July 2022	8515 · Safety	Tiburon	-691.49
			Inv #014503, #014664, #014665 (PO#753061): M.P. Supplies - June 2022 (AJE FY21-22)	7021 · Plant Maintenance Supplies	Belvedere	-415.42
			Inv #014503, #014664, #014665 (PO#753061): M.P. Supplies - June 2022 (AJE FY21-22)	7021 · Plant Maintenance Supplies	Tiburon	-585.59
TOTAL						-6,069.97
08/11/22	9103	VWR International, LLC	Acct #80012138, Lab Supplies - July 2022	JP Morgan Chase - Primary 7399		
			Inv #8810169917 (PO #160286), Lab Supplies for digesters - July 2022	7025 · Lab Supplies & Chemicals	Belvedere	-97.63
			Inv #8810169917 (PO #160286), Lab Supplies for digesters - July 2022	7025 · Lab Supplies & Chemicals	Tiburon	-137.63
TOTAL						-235.26
08/11/22	9104	Waste Management of R...	Acct #507-0000190-1507-2, Sludge Disposal - July 2022	JP Morgan Chase - Primary 7399		
			Inv #0105854-1507-7 Sludge Disposal - 1 Drop-off + Reg-waste approval fee - July 2022	7029 · Main Plant Sludge Disposal	Belvedere	-164.63
			Inv #0105854-1507-7 Sludge Disposal - 1 Drop-off + Reg-waste approval fee - July 2022	7029 · Main Plant Sludge Disposal	Tiburon	-232.07
TOTAL						-396.70
08/11/22	9105	Water Components & Bu...	Acct #454, M.P. Supplies - July 2022	JP Morgan Chase - Primary 7399		
			Inv #30585929 (PO#954077), M.P. Maint. Supplies - July 2022	7021 · Plant Maintenance Supplies	Belvedere	-283.99
			Inv #30585929 (PO#954077), M.P. Maint. Supplies - July 2022	7021 · Plant Maintenance Supplies	Tiburon	-400.33
TOTAL						-684.32
08/11/22	9106	Bilsborough, Chad	Reimb. for SD5 Public Ed Event @ MC Fair - July 2022	JP Morgan Chase - Primary 7399		
			Reimb. for SD5 Public Ed Event @ MC Fair - 7.6.2022	6002 · Outreach & Newsletter	Belvedere	-8.11
			Reimb. for SD5 Public Ed Event @ MC Fair - 7.6.2022	6002 · Outreach & Newsletter	Tiburon:Par...	-0.50

Sanitary Distr. No.5 of Marin Co.
Warrant List Detail
 July 15 through August 15, 2022

08/11/22

Date	Num	Name	Memo	Account	Class	Paid Amount
			Reimb. for SD5 Public Ed Event @ MC Fair - 7.6.2022	6002 · Outreach & Newsletter	Tiburon	-11.39
TOTAL						-20.00
08/11/22	9107	Salazar, Ignacio	Reimb. for Safety Boots + PPE/Uniforms - July 2022	JP Morgan Chase - Primary 7399		
			Reimb. for Safety Boots (\$200 max / 2022 MOU) - July 2022 (FY22-23)	8515 · Safety	Belvedere	-81.10
			Reimb. for Safety Boots (\$200 max / 2022 MOU) - July 2022 (FY22-23)	8515 · Safety	Tiburon:Par...	-5.00
			Reimb. for Safety Boots (\$200 max / 2022 MOU) - July 2022 (FY22-23)	8515 · Safety	Tiburon	-113.90
			Reimb. for PPE/Uniforms - July 2022	8520 · Personal Protection/Safety ...	Belvedere	-115.57
			Reimb. for PPE/Uniforms - July 2022	8520 · Personal Protection/Safety ...	Tiburon:Par...	-7.13
			Reimb. for PPE/Uniforms - July 2022	8520 · Personal Protection/Safety ...	Tiburon	-162.30
TOTAL						-485.00
08/15/22	9110	Alameda Electrical Distri...	Cust #56156, M.P. Supplies - August 2022	JP Morgan Chase - Primary 7399		
			Inv #S5347140.002 & S5347140.003 (PO#57743), Inv #S5362246.006 (PO#954074): M.P. Supplies - Aug...	7021 · Plant Maintenance Supplies	Belvedere	-369.46
			Inv #S5347140.002 & S5347140.003 (PO#57743), Inv #S5362246.006 (PO#954074): M.P. Supplies - Aug...	7021 · Plant Maintenance Supplies	Tiburon	-520.81
			Inv #S5387529.001 (PO#854082) , #S5387534.001 (PO#954085), #S5367791.001 (PO#954075): M.P. S...	7021 · Plant Maintenance Supplies	Belvedere	-1,849.92
			Inv #S5387529.001 (PO#854082) , #S5387534.001 (PO#954085), #S5367791.001 (PO#954075): M.P. S...	7021 · Plant Maintenance Supplies	Tiburon	-2,607.71
TOTAL						-5,347.90
08/15/22	9111	Caltronics Business Syst...	Acct #SD15, Multi-purpose Copier Contract - July 2022	JP Morgan Chase - Primary 7399		
			Inv Inv #3550797 & Inv #3489487, Konica Multi-purpose copier (C308) contract - July 2022	6047 · Office Supplies	Belvedere	-72.80
			Inv Inv #3550797 & Inv #3489487, Konica Multi-purpose copier (C308) contract - July 2022	6047 · Office Supplies	Tiburon:Par...	-4.49
			Inv Inv #3550797 & Inv #3489487, Konica Multi-purpose copier (C308) contract - July 2022	6047 · Office Supplies	Tiburon	-102.24
TOTAL						-179.53
08/15/22	9112	Cintas Corporation #626	Acct #626-00821, PPE/Safetywear + Service - July 2022	JP Morgan Chase - Primary 7399		
			#4124092741, #4124729368, #4125439483, #4126113550, #4126804791, PPE/Safetwear + Service - Jul...	8520 · Personal Protection/Safety ...	Belvedere	-126.47
			#4124092741, #4124729368, #4125439483, #4126113550, #4126804791, PPE/Safetwear + Service - Jul...	8520 · Personal Protection/Safety ...	Tiburon:Par...	-7.80
			#4124092741, #4124729368, #4125439483, #4126113550, #4126804791, PPE/Safetwear + Service - Jul...	8520 · Personal Protection/Safety ...	Tiburon	-177.62
			#9013, #410931643 Credits - July 2022	8520 · Personal Protection/Safety ...	Belvedere	53.04
			#9013, #410931643 Credits - July 2022	8520 · Personal Protection/Safety ...	Tiburon:Par...	3.27
			#9013, #410931643 Credits - July 2022	8520 · Personal Protection/Safety ...	Tiburon	74.49
TOTAL						-181.09
08/15/22	9113	Comcast Business	Acct# 8155 30 011 0149465, Bus. Voice, Internet & Cable, July 2022	JP Morgan Chase - Primary 7399		
			Bundle: Cable (\$219.75+\$71.33 add'l fees) - July 2022	8510 · Data/Alarms/IT Supp & Lice...	Belvedere	-118.03
			Bundle: Cable (\$219.75+\$71.33 add'l fees) - July 2022	8510 · Data/Alarms/IT Supp & Lice...	Tiburon:Par...	-7.28
			Bundle: Cable (\$219.75+\$71.33 add'l fees) - July 2022	8510 · Data/Alarms/IT Supp & Lice...	Tiburon	-165.77
			Bundle: Internet (\$19.95) - July 2022	8510 · Data/Alarms/IT Supp & Lice...	Belvedere	-8.09
			Bundle: Internet (\$19.95) - July 2022	8510 · Data/Alarms/IT Supp & Lice...	Tiburon:Par...	-0.50
			Bundle: Internet (\$19.95) - July 2022	8510 · Data/Alarms/IT Supp & Lice...	Tiburon	-11.36
			Bundle: Land Line Phones (\$249.50+ \$18.85 add'l Fees) - July 2022	8531 · Main Plant Telephones	Belvedere	-108.82
			Bundle: Land Line Phones (\$249.50+ \$39.75 add'l Fees) - July 2022	8532 · Paradise Cove Telephones	Tiburon:Par...	-6.71

Sanitary Distr. No.5 of Marin Co.
Warrant List Detail
 July 15 through August 15, 2022

08/11/22

Date	Num	Name	Memo	Account	Class	Paid Amount
			Bundle: Land Line Phones (\$249.50+ \$39.75 add'l Fees) - July 2022	8531 · Main Plant Telephones	Tiburon	-152.82
TOTAL						-579.38
08/15/22	9114	HDR Engineering, Inc.	Consulting, MCSD5 Staffing Assmnt - Jan - Mar 2022 (AJE FY21-22)	JP Morgan Chase - Primary 7399		
			Inv #1200451807 HDR Consulting, SD5 Staffing Assessment Jan - Mar 2022 (AJE FY21-22)	6017 · Consulting Fees	Belvedere	-7,176.16
			Inv #1200451807 HDR Consulting, SD5 Staffing Assessment Jan - Mar 2022 (AJE FY21-22)	6017 · Consulting Fees	Tiburon:Par...	-582.71
			Inv #1200451807 HDR Consulting, SD5 Staffing Assessment Jan - Mar 2022 (AJE FY21-22)	6017 · Consulting Fees	Tiburon	-12,197.08
TOTAL						-19,955.95
08/15/22	9115	MidAmerica	Acct#: SD5MARIN0G5, 2022 Rates, Supplemental 2022	JP Morgan Chase - Primary 7399		
			(2022 Rates) HRA Retiree Supplemental Health Reimbursement - thru December 2022	8022.05 · Reitree Health	Belvedere	-2,638.01
			(2022 Rates) HRA Retiree Supplemental Health Reimbursement - thru December 2022	8022.05 · Reitree Health	Tiburon:Par...	-162.64
			(2022 Rates) HRA Retiree Supplemental Health Reimbursement - thru December 2022	8022.05 · Reitree Health	Tiburon	-3,704.93
TOTAL						-6,505.58
08/15/22	9116	Pacific Gas & Electric	Acct #2908031411-4, Utilities - July 2022	JP Morgan Chase - Primary 7399		
			Acct #2908031411-4, Main Plant Utilities - July 2022	8542 · Main Plant Utilities	Belvedere	-6,934.29
			Acct #2908031411-4, P.C. Plant Utilities - July 2022	8543 · Paradise Cove Utilities	Tiburon:Par...	-2,129.27
			Acct #2908031411-4, Main Plant Utilities - July 2022	8542 · Main Plant Utilities	Tiburon	-9,774.84
			Acct #2908031411-4, Belv Pump St Utilities - July 2022	8544 · Pump Station Utilities	Belvedere	-1,278.66
			Acct #2908031411-4, P.C. Pump St Utilities - July 2022	8544 · Pump Station Utilities	Tiburon:Par...	-270.25
			Acct #2908031411-4, Tib Pump St Utilities - July 2022	8544 · Pump Station Utilities	Tiburon	-2,608.36
TOTAL						-22,995.67
08/15/22	9117	Special District Risk Man...	Member #7665, Life, Vision, DDS & LTD Ins. - September 2022	JP Morgan Chase - Primary 7399		
			Employee Life & ADD Insurance - Inv #39241 - September 2022	8020.05 · Employee Health	Belvedere	-55.15
			Employee Life & ADD Insurance - Inv #39241 - September 2022	8020.05 · Employee Health	Tiburon:Par...	-3.40
			Employee Life & ADD Insurance - Inv #39241 - September 2022	8020.05 · Employee Health	Tiburon	-77.45
			Employee LTD Insurance - Inv #39241 - September 2022	8020.05 · Employee Health	Belvedere	-140.04
			Employee LTD Insurance - Inv #39241 - September 2022	8020.05 · Employee Health	Tiburon:Par...	-8.63
			Employee LTD Insurance - Inv #39241 - September 2022	8020.05 · Employee Health	Tiburon	-196.68
			Employee DDS Insurance - Inv #39241 - September 2022	8020.05 · Employee Health	Belvedere	-364.13
			Employee DDS Insurance - Inv #39241 - September 2022	8020.05 · Employee Health	Tiburon:Par...	-22.45
			Employee DDS Insurance - Inv #39241 - September 2022	8020.05 · Employee Health	Tiburon	-511.41
			Employee Vision Insurance - Inv #39241 - September 2022	8020.05 · Employee Health	Belvedere	-62.48
			Employee Vision Insurance - Inv #39241 - September 2022	8020.05 · Employee Health	Tiburon:Par...	-3.85
			Employee Vision Insurance - Inv #39241 - September 2022	8020.05 · Employee Health	Tiburon	-87.75
TOTAL						-1,533.42
08/15/22	9118	Verizon Wireless	Acct #0342125502-00001: iPhones & BPS Comm - August 2022	JP Morgan Chase - Primary 7399		
			Inv #9901157584: Monthly SD5 EE Cell phone Charges (@ \$175/mo.Plan+\$15/ea EE) + (2 iPads (\$70 t...	8531 · Main Plant Telephones	Belvedere	-133.74
			Inv #9901157584: Monthly SD5 EE Cell phone Charges (@ \$175/mo.Plan+\$15/ea EE) + (2 iPads (\$70 t...	8532 · Paradise Cove Telephones	Tiburon:Par...	-8.25
			Inv #9901157584: Monthly SD5 EE Cell phone Charges (@ \$175/mo.Plan+\$15/ea EE) + (2 iPads (\$70 t...	8531 · Main Plant Telephones	Tiburon	-187.83
			Inv #9901157584: Monthly Charges for BPS Telephone lines (BPS#2, #13+#14 / Telstar) - August 2022	8533 · Pumps & Lines Telephones	Belvedere	-35.00

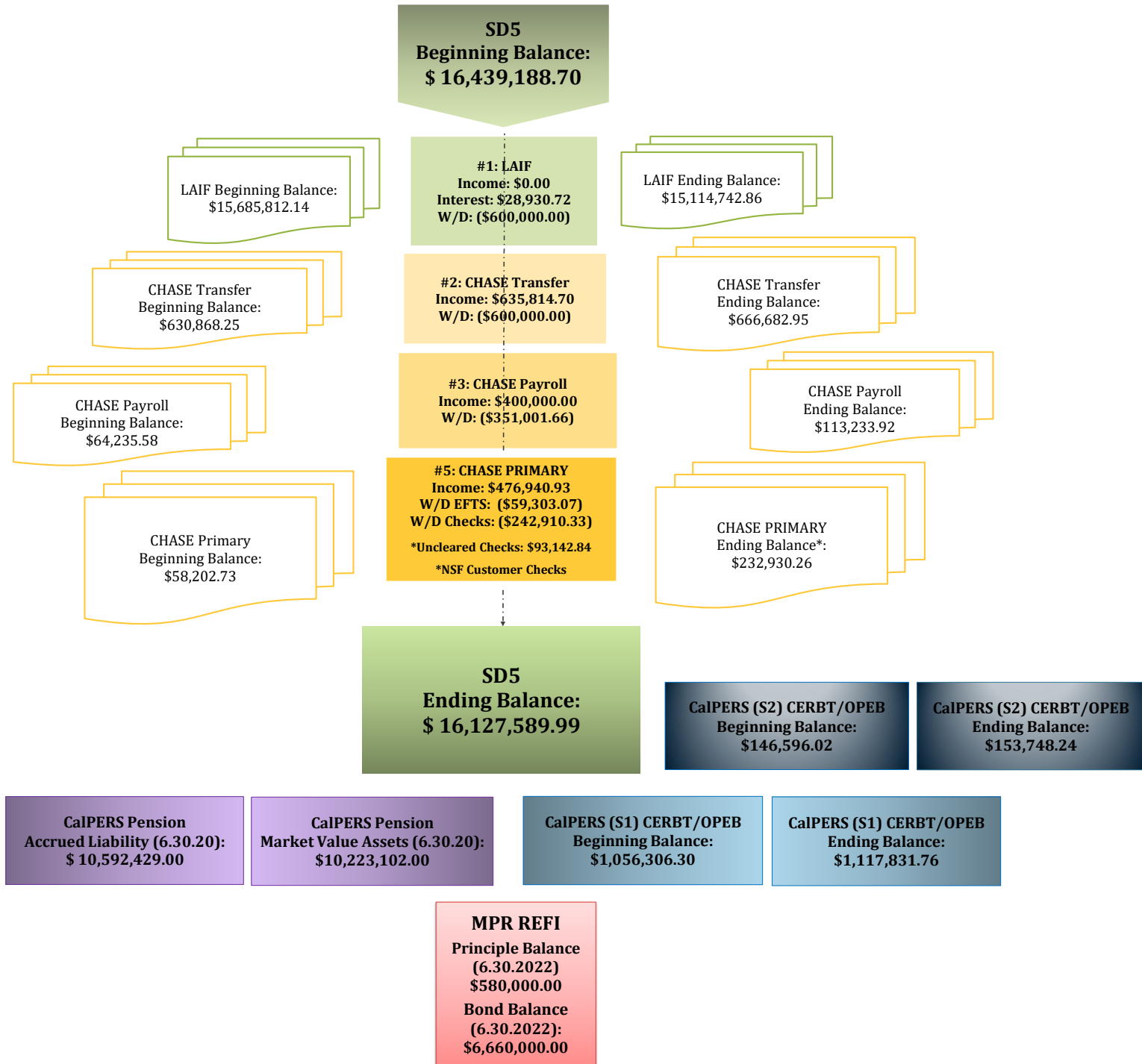
08/11/22

**Sanitary Distr. No.5 of Marin Co.
Warrant List Detail
July 15 through August 15, 2022**

<u>Date</u>	<u>Num</u>	<u>Name</u>	<u>Memo</u>	<u>Account</u>	<u>Class</u>	<u>Paid Amount</u>
			Inv #9901157584: Monthly Charges for P.C. PS Telephone lines (SF#1+#2+P.C. Plant / Telstar) - Au...	8533 · Pumps & Lines Telephones	Tiburon:Par...	-35.00
			Inv #9901157584: Taxes, Gov't Surcharges & Fees - August 2022	8531 · Main Plant Telephones	Belvedere	-4.55
			Inv #9901157584: Taxes, Gov't Surcharges & Fees - August 2022	8532 · Paradise Cove Telephones	Tiburon:Par...	-0.28
			Inv #9901157584: Taxes, Gov't Surcharges & Fees - August 2022	8531 · Main Plant Telephones	Tiburon	-6.39
TOTAL						-411.04
08/15/22	9119	Triola, Joseph	Reimb. for SD5 P.C. Parts & SD5 Trucks/Standby Mileage Reimb - July 2022	JP Morgan Chase - Primary 7399		
			Reimb. for Utility Truck - July 2022	7072 · Maintenance	Belvedere	-9.26
			Reimb. for Utility Truck & P.C. Parts - July 2022	7072 · Maintenance	Tiburon:Par...	-0.57
			Reimb. for Utility Truck - July 2022	7072 · Maintenance	Tiburon	-13.01
			Standby Mileage - Belvedere only	6018.2 · Standby Mileage Expense ...	Belvedere	-54.99
TOTAL						-77.83

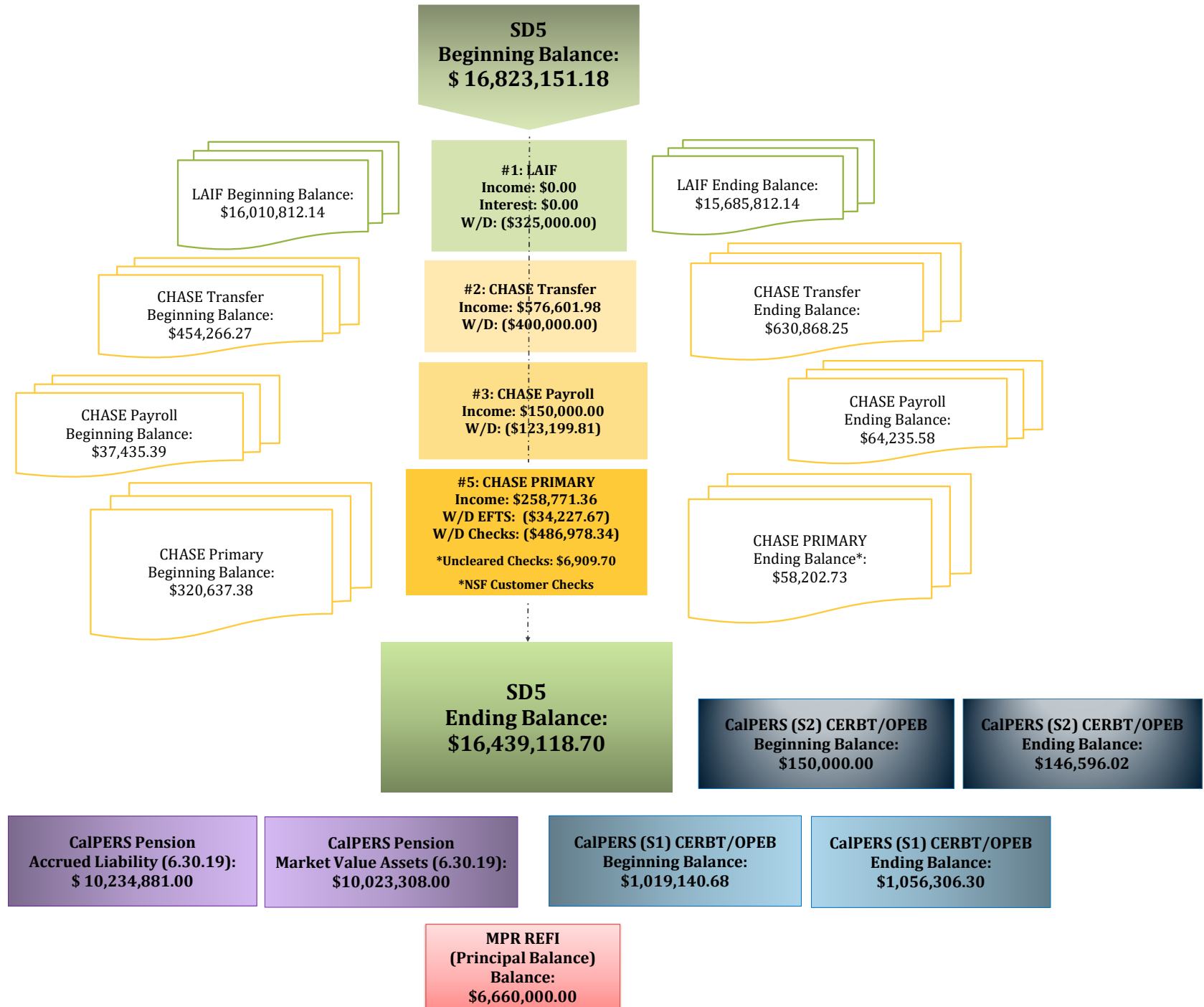
CASH FLOW CHART

SANITARY DISTRICT NO. 5 OF MARIN COUNTY: July 2022



CASH FLOW CHART

SANITARY DISTRICT NO. 5 OF MARIN COUNTY: June 2022





NOTICE OF AUTOMATIC PAYMENT

Paychex of New York LLC
1535 Scenic Avenue Suite 100
Costa Mesa CA 92626

Client # 0082 Y400-2116
Invoice # 2022071401

AUTOMATIC PAYMENT \$259.84

This amount will be deducted from the following bank account at or after 12:01 A.M on 7/15/22.

XXXXXXXXXXXXXXXX506

ADDRESS SERVICE REQUESTED

0082 Y400-2116
SANITARY DISTRICT NO 5
2001 Paradise Dr
Tiburon, California 94920-1937

For questions regarding your account, please call (844) 729-9247

ACCOUNT SUMMARY				AMOUNT
Previous Balance on Invoice#2022062901 Due 06/30/22				247.70
Payment Received - Thank You				-247.70
Balance Forward				0.00
Total New Charges				259.84
Account Balance (Includes Balance Forward, New Charges, and Pending Automatic Payments)				259.84

CHECK DATE	DESCRIPTION OF SERVICE	PROCESSING DATE	# TRANSACTIONS	AMOUNT
NEW CHARGES				
07/15/22	Paychex Productivity	07/14/22	13	333.45
	Direct Deposit Premium Processing			60.00
	Quarter End Delivery			4.00
	Delivery		1	15.75
	Client Discount		1	-153.36
	Total New Charges			259.84
Automatic Payment (Includes New Charges and applicable credits from Balance Forward above)				259.84

②

ds
R

Thank you for choosing Paychex.

CASH REQUIREMENTS

CASH REQUIRED FOR NEGOTIABLE CHECKS &/OR ELECTRONIC FUNDS TRANSFERS (EFT) FOR CHECK DATE 07/15/22: \$69,647.59 #1

IMPORTANT COVID-19 INFORMATION: If you filed IRS Form 7200, please notify your Paychex representative to avoid owing a balance at the end of the quarter and ensure your Form 941 is accurate.

TRANSACTION SUMMARY

SUMMARY BY TRANSACTION TYPE -	TOTAL ELECTRONIC FUNDS TRANSFER (EFT)	69,647.59
	CASH REQUIRED FOR NEGOTIABLE CHECKS &/OR EFT	69,647.59
	TOTAL REMAINING DEDUCTIONS / WITHHOLDINGS / LIABILITIES	14,886.90
	CASH REQUIRED FOR CHECK DATE 07/15/22	84,534.49

TRANSACTION DETAIL

ELECTRONIC FUNDS TRANSFER - Your financial institution will initiate transfer to Paychex at or after 12:01 A.M. on transaction date.

<u>TRANS. DATE</u>	<u>BANK NAME</u>	<u>ACCOUNT NUMBER</u>	<u>PRODUCT</u>	<u>DESCRIPTION</u>		BANK DRAFT AMOUNTS & OTHER TOTALS
07/15/22	JPMORGAN CHASE BANK,	xxxxxxxxxxxxx506	Direct Deposit	Net Pay Allocations	40,624.48	40,624.48
07/15/22	JPMORGAN CHASE BANK,	xxxxxxxxxxxxx506	Taxpay®	Employee Withholdings		
				Social Security	4,854.47	
				Medicare	1,135.31	
				Fed Income Tax	11,949.56	
				CA Income Tax	4,943.40	
				Total Withholdings	22,882.74	
				Employer Liabilities		
				Social Security	4,854.45	
				Medicare	1,135.31	
				Fed Unemploy	14.34	
				CA Disability	26.30	
				CA Unemploy	107.58	
				CA Emp Train	2.39	
				Total Liabilities	6,140.37	29,023.11
				EFT FOR 07/15/22		69,647.59
				TOTAL EFT		69,647.59

NO

REMAINING DEDUCTIONS / WITHHOLDINGS / LIABILITIES - Paychex does not remit these funds. You must ensure accurate and timely payment of applicable items.

<u>TRANS. DATE</u>	<u>BANK NAME</u>	<u>ACCOUNT NUMBER</u>	<u>PRODUCT</u>	<u>DESCRIPTION</u>		<u>TOTAL</u>
07/15/22	Refer to your records for account Information		Payroll	Employee Deductions		
				401A Member Contribu	2,689.78	
				Calpers 457B	6,300.00	
				Calpers 457B Roth	5,800.68	

CASH REQUIREMENTS

CASH REQUIRED FOR NEGOTIABLE CHECKS &/OR ELECTRONIC FUNDS TRANSFERS (EFT) FOR CHECK DATE 07/15/22: \$69,647.59

REMAINING DEDUCTIONS / WITHHOLDINGS / LIABILITIES (cont.) - Paychex does not remit these funds. You must ensure accurate and timely payment of applicable items.

<u>TRANS. DATE</u>	<u>BANK NAME</u>	<u>ACCOUNT NUMBER</u>	<u>PRODUCT</u>	<u>DESCRIPTION</u>	<u>TOTAL</u>
07/15/22	Refer to your records for account	Information	Payroll	Employee Deductions (cont.)	
				Med 125	96.44
				Total Deductions	14,886.90
TOTAL REMAINING DEDUCTIONS / WITHHOLDINGS / LIABILITIES					14,886.90

PAYCHEX WILL MAKE THESE TAX DEPOSIT(S) ON YOUR BEHALF - This information serves as a record of payment.

<u>DUE DATE</u>	<u>PRODUCT</u>	<u>DESCRIPTION</u>	
07/20/22	Taxpay®	FED IT PMT Group	23,929.10
07/20/22	Taxpay®	CA IT PMT Group	4,969.70

NOTICE OF AUTOMATIC PAYMENT



Paychex of New York LLC
 1535 Scenic Avenue Suite 100
 Costa Mesa CA 92626

Client # 0082 Y400-2116
 Invoice # 2022072601

AUTOMATIC PAYMENT \$252.55

This amount will be deducted from the following bank account at or after 12:01 A.M on 7/29/22.

XXXXXXXXXXXXXXXXX506

ADDRESS SERVICE REQUESTED

0082 Y400-2116
 SANITARY DISTRICT NO 5
 2001 Paradise Dr
 Tiburon, California 94920-1937

For questions regarding your account, please call (844) 729-9247

ACCOUNT SUMMARY				AMOUNT
Previous Balance on Invoice#2022071501 Due 07/15/22				211.08
Previous Balance on Invoice#2022071801 Due 07/18/22				227.02
Payment Received - Thank You				227.02
Payment Received - Thank You				211.08
Balance Forward				0.00
Total New Charges				+ 252.55
Account Balance (Includes Balance Forward, New Charges, and Pending Automatic Payments)				= 252.55

CHECK DATE	DESCRIPTION OF SERVICE	PROCESSING DATE	# TRANSACTIONS	AMOUNT
NEW CHARGES				
07/29/22	Paychex Productivity	07/26/22	12	327.80
	Client Discount		1	-91.79
	Delivery		1	16.54
	Total New Charges			252.55
Automatic Payment (Includes New Charges and applicable credits from Balance Forward above)				252.55

Thank you for choosing Paychex.

CASH REQUIREMENTS

CASH REQUIRED FOR NEGOTIABLE CHECKS &/OR ELECTRONIC FUNDS TRANSFERS (EFT) FOR CHECK DATE 07/29/22: \$65,414.69

IMPORTANT COVID-19 INFORMATION: If you filed IRS Form 7200, please notify your Paychex representative to avoid owing a balance at the end of the quarter and ensure your Form 941 is accurate.

TRANSACTION SUMMARY

SUMMARY BY TRANSACTION TYPE -	TOTAL ELECTRONIC FUNDS TRANSFER (EFT)	65,414.69
	CASH REQUIRED FOR NEGOTIABLE CHECKS &/OR EFT	<u>65,414.69</u>
	TOTAL REMAINING DEDUCTIONS / WITHHOLDINGS / LIABILITIES	6,029.03
	CASH REQUIRED FOR CHECK DATE 07/29/22	<u>71,443.72</u>

TRANSACTION DETAIL

ELECTRONIC FUNDS TRANSFER - Your financial institution will initiate transfer to Paychex at or after 12:01 A.M. on transaction date.

<u>TRANS. DATE</u>	<u>BANK NAME</u>	<u>ACCOUNT NUMBER</u>	<u>PRODUCT</u>	<u>DESCRIPTION</u>		BANK DRAFT AMOUNTS & OTHER TOTALS
07/28/22	JPMORGAN CHASE BANK,	xxxxxxxxxxxxx506	Direct Deposit	Net Pay Allocations	39,694.65	<u>39,694.65</u>
					EFT FOR 07/28/22	39,694.65 (P)
07/29/22	JPMORGAN CHASE BANK,	xxxxxxxxxxxxx506	Taxpay@	Employee Withholdings		
				Social Security	4,092.45	
				Medicare	957.11	
				Fed Income Tax	10,872.39	
				CA Income Tax	4,508.01	
				Total Withholdings	<u>20,429.96</u>	
				Employer Liabilities		
				Social Security	4,092.47	
				Medicare	957.09	
				Fed Unemploy	22.91	
				CA Disability	42.00	
				CA Unemploy	171.80	
				CA Emp Train	3.81	
				Total Liabilities	<u>5,290.08</u>	25,720.04
					EFT FOR 07/29/22	25,720.04 (P)
					TOTAL EFT	65,414.69

Handwritten initials: OE, R

REMAINING DEDUCTIONS / WITHHOLDINGS / LIABILITIES - Paychex does not remit these funds. You must ensure accurate and timely payment of applicable items.

<u>TRANS. DATE</u>	<u>BANK NAME</u>	<u>ACCOUNT NUMBER</u>	<u>PRODUCT</u>	<u>DESCRIPTION</u>		<u>TOTAL</u>
07/29/22	Refer to your records for account information		Payroll	Employee Deductions		
				401A Member Contribu	3,072.89	
				Calpers 457B	300.00	
				Calpers 457B Roth	2,510.00	

CASH REQUIREMENTS

CASH REQUIRED FOR NEGOTIABLE CHECKS &/OR ELECTRONIC FUNDS TRANSFERS (EFT) FOR CHECK DATE 07/29/22: \$65,414.69

REMAINING DEDUCTIONS / WITHHOLDINGS / LIABILITIES (cont.) - *Paychex does not remit these funds. You must ensure accurate and timely payment of applicable items.*

<u>TRANS. DATE</u>	<u>BANK NAME</u>	<u>ACCOUNT NUMBER</u>	<u>PRODUCT</u>	<u>DESCRIPTION</u>	<u>TOTAL</u>
07/29/22	Refer to your records for account	Information	Payroll	Employee Deductions (cont.)	
				Med 125	146.14
				Total Deductions	6,029.03
TOTAL REMAINING DEDUCTIONS / WITHHOLDINGS / LIABILITIES					6,029.03

PAYCHEX WILL MAKE THESE TAX DEPOSIT(S) ON YOUR BEHALF - *This information serves as a record of payment.*

<u>DUE DATE</u>	<u>PRODUCT</u>	<u>DESCRIPTION</u>	
08/03/22	Taxpay®	FED IT PMT Group	20,971.51
08/03/22	Taxpay®	CA IT PMT Group	4,675.84

3:54 PM
08/11/22

Sanitary Distr. No.5 of Marin Co.
Comparative Balance Sheet
As of July 31, 2022

	<u>Jul 31, 22</u>	<u>Jun 30, 22</u>	<u>\$ Change</u>
ASSETS			
Current Assets			
Checking/Savings			
Local Agency Investment Fund			
Belvedere			
Belvedere Operating	3,638,261.73	3,638,261.73	0.00
Belvedere Operating Reserve	516,923.05	516,923.05	0.00
Belvedere Capital & CIP Reserve	2,826,970.79	2,826,970.79	0.00
Belvedere PERS Retirement Trust	356,250.00	356,250.00	0.00
Belvedere Disaster Recovery Fnd	356,250.00	356,250.00	0.00
Total Belvedere	<u>7,694,655.57</u>	<u>7,694,655.57</u>	<u>0.00</u>
Tiburon			
Tiburon Operating	937,306.33	1,508,375.61	-571,069.28
Tiburon Operating Reserve	683,930.00	683,930.00	0.00
Tiburon Capital & CIP Reserve	4,511,350.96	4,511,350.96	0.00
Tiburon PERS Retirement Trust	643,750.00	643,750.00	0.00
Tiburon Disaster Recovery Fund	643,750.00	643,750.00	0.00
Total Tiburon	<u>7,420,087.29</u>	<u>7,991,156.57</u>	<u>-571,069.28</u>
Total Local Agency Investment Fund	<u>15,114,742.86</u>	<u>15,685,812.14</u>	<u>-571,069.28</u>
JP Morgan Chase - Primary 7399	140,237.42	51,743.03	88,494.39
JP Morgan Chase - Payroll 7506	112,783.92	61,896.80	50,887.12
JP Morgan Chase - Transfer 7522	666,682.95	630,868.25	35,814.70
Total Checking/Savings	<u>16,034,447.15</u>	<u>16,430,320.22</u>	<u>-395,873.07</u>
Accounts Receivable			
Accounts Receivable	19,138.76	3,688.00	15,450.76
Total Accounts Receivable	<u>19,138.76</u>	<u>3,688.00</u>	<u>15,450.76</u>
Other Current Assets	<u>49,414.62</u>	<u>68,082.28</u>	<u>-18,667.66</u>
Total Current Assets	<u>16,103,000.53</u>	<u>16,502,090.50</u>	<u>-399,089.97</u>
Fixed Assets	<u>20,408,185.19</u>	<u>20,408,185.19</u>	<u>0.00</u>
TOTAL ASSETS	<u>36,511,185.72</u>	<u>36,910,275.69</u>	<u>-399,089.97</u>
LIABILITIES & EQUITY			
Liabilities	7,993,981.79	7,993,981.79	0.00
Equity			
3900 - Net Assets	28,916,293.90	27,340,940.03	1,575,353.87
Net Income	-399,089.97	1,575,353.87	-1,974,443.84
Total Equity	<u>28,517,203.93</u>	<u>28,916,293.90</u>	<u>-399,089.97</u>
TOTAL LIABILITIES & EQUITY	<u>36,511,185.72</u>	<u>36,910,275.69</u>	<u>-399,089.97</u>

Sanitary Distr. No.5 of Marin Co.
Annual Budget vs Actual Expenses

July 2022

	Jul 22	Budget	\$ Over Budget	% of Budget
Ordinary Income/Expense				
Income				
5000 · Property Taxes				
5001.2 · TEETER	4,320.75	875,000.00	-870,679.25	0.5%
5002 · UNSEC	0.00	16,000.00	-16,000.00	0.0%
5003 · PUNS / PRIOR UNSECURED	0.00	300.00	-300.00	0.0%
5004 · REDEMPTION / RDMPT	21.42			
5006 · SPLU	0.00	500.00	-500.00	0.0%
5041 · SUPSEC	915.93	15,000.00	-14,084.07	6.1%
5046 · Excess ERAF	0.00	275,000.00	-275,000.00	0.0%
5280 · HOPTR	0.00	3,333.00	-3,333.00	0.0%
5483 · Other tax	1.44	0.00	1.44	100.0%
Total 5000 · Property Taxes	5,259.54	1,185,133.00	-1,179,873.46	0.4%
5007 · Sewer Service Charge				
5007.1 · Sewer Service - Tiburon Ops	0.00	2,368,000.00	-2,368,000.00	0.0%
5007.5 · Sewer Service - Tiburon Cap	16,748.13	0.00	16,748.13	100.0%
5007.2 · Sewer Service-Belv Ops	8,511.21	1,570,581.00	-1,562,069.79	0.5%
5007.3 · Sewer Service-Belv Cap	5,295.82	605,719.00	-600,423.18	0.9%
5007.4 · Other User Fees	0.00	38,700.00	-38,700.00	0.0%
Total 5007 · Sewer Service Charge	30,555.16	4,583,000.00	-4,552,444.84	0.7%
5201 · Interest				
5201.2 · Interest LAIF	28,930.72	100,000.00	-71,069.28	28.9%
Total 5201 · Interest	28,930.72	100,000.00	-71,069.28	28.9%
5900.3 · Connection Fees				
5900.30 · Connection Permit Fees	18,692.00	10,000.00	8,692.00	186.9%
5900.31 · Collection	16,548.00	125,000.00	-108,452.00	13.2%
5900.34 · Treatment	21,400.00	125,000.00	-103,600.00	17.1%
Total 5900.3 · Connection Fees	56,640.00	260,000.00	-203,360.00	21.8%
5900.4 · Inspection Permit Fees	1,500.00	10,000.00	-8,500.00	15.0%
5900.5 · SASM Expense Reimb.	15,450.76	100,000.00	-84,549.24	15.5%
5900.9 · Other Income	0.00	100.00	-100.00	0.0%
5900.10 · Paradise Sewer Line Ext. Fees	0.00	14,040.00	-14,040.00	0.0%
Total Income	138,336.18	6,252,273.00	-6,113,936.82	2.2%
Gross Profit	138,336.18	6,252,273.00	-6,113,936.82	2.2%
Expense				
6000 · Administrative Expenses				
6001 · Advertising	799.00	1,000.00	-201.00	79.9%
6008 · Audit & Accounting	0.00	40,000.00	-40,000.00	0.0%
6017 · Consulting Fees	27,381.23	100,000.00	-72,618.77	27.4%
6018 · Travel & Meetings				
6018.1 · Meetings & Travel	941.34	7,000.00	-6,058.66	13.4%
6018.2 · Standby Mileage Expense Reimb	51.23	10,000.00	-9,948.77	0.5%
Total 6018 · Travel & Meetings	992.57	17,000.00	-16,007.43	5.8%
6020 · Continuing Education	471.78	10,000.00	-9,528.22	4.7%
6021 · County Fees	0.00	16,590.00	-16,590.00	0.0%
6024 · Director Fees	3,800.00	9,000.00	-5,200.00	42.2%
6025 · Dues & Subscriptions	0.00	31,000.00	-31,000.00	0.0%
6026 · Elections	0.00	9,000.00	-9,000.00	0.0%
6033 · Insurance Property & Liability				
6033.1 · PLP Public Entity Phys Damage	45,558.14	45,000.00	558.14	101.2%
6033.2 · General Liability	0.00	60,000.00	-60,000.00	0.0%

Sanitary Distr. No.5 of Marin Co.
Annual Budget vs Actual Expenses

July 2022

	Jul 22	Budget	\$ Over Budget	% of Budget
6033.3 · Physical Property Damage - Auto	4,298.00	8,000.00	-3,702.00	53.7%
Total 6033 · Insurance Property & Liability	49,856.14	113,000.00	-63,143.86	44.1%
6039 · Legal	16,803.00	50,000.00	-33,197.00	33.6%
6047 · Office Supplies	6,421.13	10,000.00	-3,578.87	64.2%
6056 · Postage	26.95	1,200.00	-1,173.05	2.2%
6059 · Pollution Prevention/Public Edu	0.00	5,000.00	-5,000.00	0.0%
6065 · Miscellaneous Expense	0.00			
Total 6000 · Administrative Expenses	106,551.80	412,790.00	-306,238.20	25.8%
7000 · Ops & Maintenance Expenses				
7010 · Pumps & Lines Maintenance				
7011 · Pumps & Lines Maintenance	7,839.14	100,000.00	-92,160.86	7.8%
7013 · Emergency Line Repair	0.00	50,000.00	-50,000.00	0.0%
Total 7010 · Pumps & Lines Maintenance	7,839.14	150,000.00	-142,160.86	5.2%
7020 · Main Plant Maintenance				
7021 · Plant Maintenance Supplies	6,275.31	27,000.00	-20,724.69	23.2%
7022 · Plant Maint. Parts & Service	38,022.17	150,000.00	-111,977.83	25.3%
7023 · Janitorial Supplies & Service	796.12	9,000.00	-8,203.88	8.8%
7024 · Main Plant Chemicals	6,710.65	120,000.00	-113,289.35	5.6%
7025 · Lab Supplies & Chemicals	866.42	21,000.00	-20,133.58	4.1%
7027 · Electrical & Instrument	2,503.37	15,000.00	-12,496.63	16.7%
7028 · Grounds Maintenance	0.00	5,000.00	-5,000.00	0.0%
7029 · Main Plant Sludge Disposal	4,592.56	50,000.00	-45,407.44	9.2%
7030 · Main Plant Outfall	0.00	0.00	0.00	0.0%
Total 7020 · Main Plant Maintenance	59,766.60	397,000.00	-337,233.40	15.1%
7040 · Paradise Cove Plant Maint				
7041 · Paradise Parts & Service	0.00	15,000.00	-15,000.00	0.0%
7042 · Paradise Supplies & Chemicals	283.31	6,500.00	-6,216.69	4.4%
7043 · Paradise Sludge Disposal	0.00	3,000.00	-3,000.00	0.0%
Total 7040 · Paradise Cove Plant Maint	283.31	24,500.00	-24,216.69	1.2%
7050 · Monitoring				
7051 · Main Plant Lab Monitoring	5,738.10	45,000.00	-39,261.90	12.8%
7052 · Paradise Cove Monitoring	706.70	12,500.00	-11,793.30	5.7%
7053 · Chronic Toxicity	2,225.00			
Total 7050 · Monitoring	8,669.80	57,500.00	-48,830.20	15.1%
7060 · Permits/Fees				
7061 · Main Plant NPDES Renewal	0.00	40,000.00	-40,000.00	0.0%
7062 · Permits/Fees - General	0.00	50,000.00	-50,000.00	0.0%
7063 · Paradise Cove Permits/Fees	0.00	9,000.00	-9,000.00	0.0%
Total 7060 · Permits/Fees	0.00	99,000.00	-99,000.00	0.0%
7070 · Truck Maintenance				
7071 · Fuel	3,479.03	15,000.00	-11,520.97	23.2%
7072 · Maintenance	147.04	20,000.00	-19,852.96	0.7%
Total 7070 · Truck Maintenance	3,626.07	35,000.00	-31,373.93	10.4%
Total 7000 · Ops & Maintenance Expenses	80,184.92	763,000.00	-682,815.08	10.5%
8000 · Salaries and Benefits Expenses				
8001 · Salaries	118,569.42			
8003 · Overtime	17,628.22	125,000.00	-107,371.78	14.1%
8004 · Standby Pay	7,242.14	80,000.00	-72,757.86	9.1%

Sanitary Distr. No.5 of Marin Co.
Annual Budget vs Actual Expenses

July 2022

	Jul 22	Budget	\$ Over Budget	% of Budget
8005 · Employee Incentives	6,000.00	60,000.00	-54,000.00	10.0%
8006 · Vacation Buyout	15,793.64	65,000.00	-49,206.36	24.3%
8013 · Payroll Taxes	8,719.30	162,665.00	-153,945.70	5.4%
8015 · Payroll/Bank Fees	950.49	101,047.00	-100,096.51	0.9%
8016 · Car Allowance	6,000.00	6,000.00	0.00	100.0%
8019 · PERS Retirement				
8019.05 · PERS Retirement	12,725.94	262,992.00	-250,266.06	4.8%
8019.06 · PERS Retirement - RBP	0.00	350.00	-350.00	0.0%
8019.08 · PERS Retirement - CalPERS UAL	791.92			
8019 · PERS Retirement - Other	0.00			
Total 8019 · PERS Retirement	13,517.86	263,342.00	-249,824.14	5.1%
8020 · Employee Health				
8020.05 · Employee Health	15,259.72	319,272.00	-304,012.28	4.8%
8021 · Employee Health Deductions	-242.58			
Total 8020 · Employee Health	15,017.14	319,272.00	-304,254.86	4.7%
8022 · Retiree Health				
8022.05 · Retiree Health	913.96	91,592.00	-90,678.04	1.0%
8022.06 · OPEB Adjustment	0.00	0.00	0.00	0.0%
8022.10 · CERBT/OPEB Annual Arc Contribtn	0.00	118,400.00	-118,400.00	0.0%
Total 8022 · Retiree Health	913.96	209,992.00	-209,078.04	0.4%
8023 · Workers Comp Insurance	22,388.99	57,275.00	-34,886.01	39.1%
Total 8000 · Salaries and Benefits Expenses	232,741.16	1,449,593.00	-1,216,851.84	16.1%
8500 · Other Operating Expenses				
8510 · Data/Alarms/IT Supp & Licensing	13,548.43	80,000.00	-66,451.57	16.9%
8515 · Safety	3,526.12	60,000.00	-56,473.88	5.9%
8520 · Personal Protection/Safety Wear	163.58	15,000.00	-14,836.42	1.1%
8530 · Telephone				
8531 · Main Plant Telephones	619.65	11,000.00	-10,380.35	5.6%
8532 · Paradise Cove Telephones	903.76	500.00	403.76	180.8%
8533 · Pumps & Lines Telephones	599.16	7,000.00	-6,400.84	8.6%
Total 8530 · Telephone	2,122.57	18,500.00	-16,377.43	11.5%
8540 · Utilities				
8541 · Water	1,601.11	8,000.00	-6,398.89	20.0%
8542 · Main Plant Utilities	15,172.70	220,000.00	-204,827.30	6.9%
8543 · Paradise Cove Utilities	2,092.96	20,000.00	-17,907.04	10.5%
8544 · Pump Station Utilities	4,132.67	45,000.00	-40,867.33	9.2%
Total 8540 · Utilities	22,999.44	293,000.00	-270,000.56	7.8%
Total 8500 · Other Operating Expenses	42,360.14	466,500.00	-424,139.86	9.1%
Total Expense	461,838.02	3,091,883.00	-2,630,044.98	14.9%
Net Ordinary Income	-323,501.84	3,160,390.00	-3,483,891.84	-10.2%
Other Income/Expense				
Other Expense				
9100 · Capital Expenditures				
9200 · Main Plant Equipment Capital				
9202 · M.P. Drainage				
9202.1 · Infl Smple Rm+Secondary Drains	0.00	75,000.00	-75,000.00	0.0%
9202.2 · Load-out & Filtering	0.00	30,000.00	-30,000.00	0.0%
Total 9202 · M.P. Drainage	0.00	105,000.00	-105,000.00	0.0%
9203 · M.P. Flare Rehabilitation	0.00	0.00	0.00	0.0%

Sanitary Distr. No.5 of Marin Co.
Annual Budget vs Actual Expenses

July 2022

	Jul 22	Budget	\$ Over Budget	% of Budget
9204 · M.P. Boiler Replacement				
9204.1 · M.P. Boiler Exhaust Piping	0.00	30,000.00	-30,000.00	0.0%
9204 · M.P. Boiler Replacement - Other	0.00	0.00	0.00	0.0%
Total 9204 · M.P. Boiler Replacement	0.00	30,000.00	-30,000.00	0.0%
9206 · Infl Dry Weather Pump Rplcmnt	0.00	40,000.00	-40,000.00	0.0%
9208 · M.P. Chemical Feed Pump Rplcmnt	0.00	20,000.00	-20,000.00	0.0%
9209 · ScrewPress PolyBlend Redundancy	0.00	35,000.00	-35,000.00	0.0%
9212 · M.P. Headworks Grinder Rplcmnt				
9212.1 · Explosion Proof Electric Hoist	0.00	10,000.00	-10,000.00	0.0%
9212 · M.P. Headworks Grinder Rplcmnt - Ot...	0.00	25,000.00	-25,000.00	0.0%
Total 9212 · M.P. Headworks Grinder Rplcmnt	0.00	35,000.00	-35,000.00	0.0%
9217 · SD5 Shop Rplcmnt /Ops Control	0.00	0.00	0.00	0.0%
9218 · Generator Control Panel	0.00	0.00	0.00	0.0%
9219 · CI2 Flash Mixer	0.00	15,000.00	-15,000.00	0.0%
Total 9200 · Main Plant Equipment Capital	0.00	280,000.00	-280,000.00	0.0%
9300 · Pumps & Lines Capital				
9301 · Tiburon Sewer Line Rehab Prog	0.00	1,000,000.00	-1,000,000.00	0.0%
9302 · PS Control Panel Upgrades	0.00	0.00	0.00	0.0%
9304 · Belvedere Sewer Line Rehab Prog	0.00	100,000.00	-100,000.00	0.0%
9305 · Valve/Wet Well Replacements				
9305.2 · Tiburon Wet Well Rehab	0.00	50,000.00	-50,000.00	0.0%
9305.1 · Belvedere Wet Well Rehab	0.00	75,000.00	-75,000.00	0.0%
Total 9305 · Valve/Wet Well Replacements	0.00	125,000.00	-125,000.00	0.0%
9306 · PS Pump & Valve Replacements	0.00	50,000.00	-50,000.00	0.0%
9307 · PS Generator Replacement	0.00	100,000.00	-100,000.00	0.0%
9310 · BPS Communication Project	0.00	0.00	0.00	0.0%
9313 · Manholes/Rodholes	0.00	75,000.00	-75,000.00	0.0%
9314 · Portable Emergency Generators	0.00			
9315 · TPS Communication Project	0.00	0.00	0.00	0.0%
Total 9300 · Pumps & Lines Capital	0.00	1,450,000.00	-1,450,000.00	0.0%
9400 · Paradise Cove Capital				
9403 · P.C. Communication Upgrades				
9403.1 · Cellular	0.00	20,000.00	-20,000.00	0.0%
Total 9403 · P.C. Communication Upgrades	0.00	20,000.00	-20,000.00	0.0%
Total 9400 · Paradise Cove Capital	0.00	20,000.00	-20,000.00	0.0%
9500 · Undesignated Capital				
9510 · Undesignated Cap - M.P.	0.00	25,000.00	-25,000.00	0.0%
9520 · Undesignated Cap - P.C. Plant	0.00	10,000.00	-10,000.00	0.0%
9530 · Undesignated Cap - P & L	0.00	50,000.00	-50,000.00	0.0%
Total 9500 · Undesignated Capital	0.00	85,000.00	-85,000.00	0.0%
Total 9100 · Capital Expenditures	0.00	1,835,000.00	-1,835,000.00	0.0%
9700 · Debt Service				
9701 · MPR Bond REFI - Principal	0.00	0.00	0.00	0.0%
9702 · MPR Bond REFI - Interest	0.00	0.00	0.00	0.0%
9703 · MPR Bond Refi - Admin Fees	0.00	0.00	0.00	0.0%
Total 9700 · Debt Service	0.00	0.00	0.00	0.0%
Total Other Expense	0.00	1,835,000.00	-1,835,000.00	0.0%

Sanitary Distr. No.5 of Marin Co.
Annual Budget vs Actual Expenses

July 2022

	<u>Jul 22</u>	<u>Budget</u>	<u>\$ Over Budget</u>	<u>% of Budget</u>
Net Other Income	0.00	-1,835,000.00	1,835,000.00	0.0%
Net Income	<u>-323,501.84</u>	<u>1,325,390.00</u>	<u>-1,648,891.84</u>	<u>-24.4%</u>

Sanitary Distr. No.5 of Marin Co.
Zone Report
July 2022

	Paradise Cove (Tiburon)	Tiburon - Other (Tiburon)	Total Tiburon	Belvedere	TOTAL
Ordinary Income/Expense					
Income					
5000 · Property Taxes					
5001.2 · TEETER	197.46	4,123.29	4,320.75	0.00	4,320.75
5004 · REDEMPTION / RDMPT	6.26	15.16	21.42	0.00	21.42
5041 · SUPSEC	41.86	874.07	915.93	0.00	915.93
5483 · Other tax	0.07	1.37	1.44	0.00	1.44
Total 5000 · Property Taxes	245.65	5,013.89	5,259.54	0.00	5,259.54
5007 · Sewer Service Charge					
5007.1 · Sewer Service - Tiburon Ops	0.00	0.00	0.00	0.00	0.00
5007.5 · Sewer Service - Tiburon Cap	765.39	15,982.74	16,748.13	0.00	16,748.13
5007.2 · Sewer Service-Belv Ops	0.00	0.00	0.00	8,511.21	8,511.21
5007.3 · Sewer Service-Belv Cap	0.00	0.00	0.00	5,295.82	5,295.82
Total 5007 · Sewer Service Charge	765.39	15,982.74	16,748.13	13,807.03	30,555.16
5201 · Interest					
5201.2 · Interest LAIF	0.00	14,319.76	14,319.76	14,610.96	28,930.72
Total 5201 · Interest	0.00	14,319.76	14,319.76	14,610.96	28,930.72
5900.3 · Connection Fees					
5900.30 · Connection Permit Fees	0.00	600.00	600.00	18,092.00	18,692.00
5900.31 · Collection	0.00	14,319.00	14,319.00	2,229.00	16,548.00
5900.34 · Treatment	0.00	19,795.00	19,795.00	1,605.00	21,400.00
Total 5900.3 · Connection Fees	0.00	34,714.00	34,714.00	21,926.00	56,640.00
5900.4 · Inspection Permit Fees	100.00	400.00	500.00	1,000.00	1,500.00
5900.5 · SASM Expense Reimb.	0.00	15,450.76	15,450.76	0.00	15,450.76
Total Income	1,111.04	85,881.15	86,992.19	51,343.99	138,336.18
Gross Profit	1,111.04	85,881.15	86,992.19	51,343.99	138,336.18
Expense					
6000 · Administrative Expenses					
6001 · Advertising	23.33	488.35	511.68	287.32	799.00
6008 · Audit & Accounting	0.00	0.00	0.00	0.00	0.00
6017 · Consulting Fees	2.56	16,450.19	16,452.75	10,928.48	27,381.23
6018 · Travel & Meetings					
6018.1 · Meetings & Travel	27.49	575.35	602.84	338.50	941.34
6018.2 · Standby Mileage Expense Reimb	0.00	32.25	32.25	18.98	51.23
Total 6018 · Travel & Meetings	27.49	607.60	635.09	357.48	992.57
6020 · Continuing Education	13.78	288.35	302.13	169.65	471.78
6024 · Director Fees	110.96	2,322.56	2,433.52	1,366.48	3,800.00
6025 · Dues & Subscriptions	0.00	0.00	0.00	0.00	0.00
6033 · Insurance Property & Liability					
6033.1 · PLP Public Entity Phys Damage	1,138.96	25,945.36	27,084.32	18,473.82	45,558.14
6033.3 · Physical Property Damage - Auto	107.45	2,447.71	2,555.16	1,742.84	4,298.00
Total 6033 · Insurance Property & Liability	1,246.41	28,393.07	29,639.48	20,216.66	49,856.14
6039 · Legal	490.63	10,270.02	10,760.65	6,042.35	16,803.00
6047 · Office Supplies	163.69	3,939.52	4,103.21	2,317.92	6,421.13
6056 · Postage	0.79	16.47	17.26	9.69	26.95
6065 · Miscellaneous Expense	0.00	0.00	0.00	0.00	0.00
Total 6000 · Administrative Expenses	2,079.64	62,776.13	64,855.77	41,696.03	106,551.80
7000 · Ops & Maintenance Expenses					
7010 · Pumps & Lines Maintenance					
7011 · Pumps & Lines Maintenance	3,470.38	3,541.33	7,011.71	827.43	7,839.14
Total 7010 · Pumps & Lines Maintenance	3,470.38	3,541.33	7,011.71	827.43	7,839.14

Sanitary Distr. No.5 of Marin Co.
Zone Report
July 2022

	Paradise Cove (Tiburon)	Tiburon - Other (Tiburon)	Total Tiburon	Belvedere	TOTAL
7020 · Main Plant Maintenance					
7021 · Plant Maintenance Supplies	0.00	3,351.22	3,351.22	2,924.09	6,275.31
7022 · Plant Maint. Parts & Service	1,535.28	22,869.57	24,404.85	13,617.32	38,022.17
7023 · Janitorial Supplies & Service	0.00	501.17	501.17	294.95	796.12
7024 · Main Plant Chemicals	0.00	4,224.92	4,224.92	2,485.73	6,710.65
7025 · Lab Supplies & Chemicals	0.00	545.42	545.42	321.00	866.42
7027 · Electrical & Instrument	0.00	1,576.08	1,576.08	927.29	2,503.37
7028 · Grounds Maintenance	0.00	0.00	0.00	0.00	0.00
7029 · Main Plant Sludge Disposal	0.00	2,891.01	2,891.01	1,701.55	4,592.56
Total 7020 · Main Plant Maintenance	1,535.28	35,959.39	37,494.67	22,271.93	59,766.60
7040 · Paradise Cove Plant Maint					
7041 · Paradise Parts & Service	0.00	0.00	0.00	0.00	0.00
7042 · Paradise Supplies & Chemicals	283.31	0.00	283.31	0.00	283.31
Total 7040 · Paradise Cove Plant Maint	283.31	0.00	283.31	0.00	283.31
7050 · Monitoring					
7051 · Main Plant Lab Monitoring	0.00	3,612.14	3,612.14	2,125.96	5,738.10
7052 · Paradise Cove Monitoring	706.70	0.00	706.70	0.00	706.70
7053 · Chronic Toxicity	2,225.00	0.00	2,225.00	0.00	2,225.00
Total 7050 · Monitoring	2,931.70	3,612.14	6,543.84	2,125.96	8,669.80
7070 · Truck Maintenance					
7071 · Fuel	101.59	2,126.38	2,227.97	1,251.06	3,479.03
7072 · Maintenance	4.29	89.87	94.16	52.88	147.04
Total 7070 · Truck Maintenance	105.88	2,216.25	2,322.13	1,303.94	3,626.07
Total 7000 · Ops & Maintenance Expenses	8,326.55	45,329.11	53,655.66	26,529.26	80,184.92
8000 · Salaries and Benefits Expenses					
8001 · Salaries	0.00	118,569.42	118,569.42	0.00	118,569.42
8003 · Overtime	0.00	17,628.22	17,628.22	0.00	17,628.22
8004 · Standby Pay	0.00	7,242.14	7,242.14	0.00	7,242.14
8005 · Employee Incentives	175.20	3,667.20	3,842.40	2,157.60	6,000.00
8006 · Vacation Buyout	0.00	15,793.64	15,793.64	0.00	15,793.64
8007 · Voluntary Deductions	0.00	-1,653.12	-1,653.12	0.00	-1,653.12
8008 · Deferred Comp 457	0.00	6,838.64	6,838.64	0.00	6,838.64
8013 · Payroll Taxes	0.00	8,719.30	8,719.30	0.00	8,719.30
8015 · Payroll/Bank Fees	0.00	950.49	950.49	0.00	950.49
8016 · Car Allowance	0.00	6,000.00	6,000.00	0.00	6,000.00
8019 · PERS Retirement					
8019.05 · PERS Retirement	545.29	5,455.22	6,000.51	6,725.43	12,725.94
8019.08 · PERS Retirement - CalPERS UAL	0.00	498.52	498.52	293.40	791.92
8019 · PERS Retirement - Other	0.00	0.00	0.00	0.00	0.00
Total 8019 · PERS Retirement	545.29	5,953.74	6,499.03	7,018.83	13,517.86
8020 · Employee Health					
8020.05 · Employee Health	383.52	8,710.60	9,094.12	6,165.60	15,259.72
8021 · Employee Health Deductions					
8021.05 · EE Health & Wellness	0.00	600.00	600.00	0.00	600.00
8021.10 · EE Medical Opt-Out	0.00	400.00	400.00	0.00	400.00
8021 · Employee Health Deductions - Other	0.00	-242.58	-242.58	0.00	-242.58
Total 8021 · Employee Health Deductions	0.00	757.42	757.42	0.00	757.42
Total 8020 · Employee Health	383.52	9,468.02	9,851.54	6,165.60	16,017.14
8022 · Retiree Health					
8022.05 · Retiree Health	22.85	520.50	543.35	370.61	913.96
Total 8022 · Retiree Health	22.85	520.50	543.35	370.61	913.96
8023 · Workers Comp Insurance	559.72	12,750.53	13,310.25	9,078.74	22,388.99
Total 8000 · Salaries and Benefits Expenses	1,686.58	212,448.72	214,135.30	24,791.38	238,926.68

Sanitary Distr. No.5 of Marin Co.
Zone Report
July 2022

	Paradise Cove (Tiburon)	Tiburon - Other (Tiburon)	Total Tiburon	Belvedere	TOTAL
8500 · Other Operating Expenses					
8510 · Data/Alarms/IT Supp & Licensing	376.48	7,888.14	8,264.62	5,283.81	13,548.43
8515 · Safety	93.55	2,061.76	2,155.31	1,370.81	3,526.12
8520 · Personal Protection/Safety Wear	4.10	86.45	90.55	73.03	163.58
8530 · Telephone					
8531 · Main Plant Telephones	0.00	375.06	375.06	244.59	619.65
8532 · Paradise Cove Telephones	886.96	0.00	886.96	16.80	903.76
8533 · Pumps & Lines Telephones	43.27	314.00	357.27	241.89	599.16
Total 8530 · Telephone	930.23	689.06	1,619.29	503.28	2,122.57
8540 · Utilities					
8541 · Water	0.00	883.11	883.11	718.00	1,601.11
8542 · Main Plant Utilities	0.00	9,551.21	9,551.21	5,621.49	15,172.70
8543 · Paradise Cove Utilities	2,092.96	0.00	2,092.96	0.00	2,092.96
8544 · Pump Station Utilities	291.30	2,464.40	2,755.70	1,376.97	4,132.67
Total 8540 · Utilities	2,384.26	12,898.72	15,282.98	7,716.46	22,999.44
Total 8500 · Other Operating Expenses	3,788.62	23,624.13	27,412.75	14,947.39	42,360.14
Total Expense	15,881.39	344,178.09	360,059.48	107,964.06	468,023.54
Net Ordinary Income	-14,770.35	-258,296.94	-273,067.29	-56,620.07	-329,687.36
Other Income/Expense					
Other Expense					
9100 · Capital Expenditures					
9200 · Main Plant Equipment Capital					
9204 · M.P. Boiler Replacement	0.00	0.00	0.00	0.00	0.00
9213 · M.P. Digester					
9213.1 · Digester Roof Rehab	0.00	43,688.94	43,688.94	25,713.67	69,402.61
Total 9213 · M.P. Digester	0.00	43,688.94	43,688.94	25,713.67	69,402.61
9218 · Generator Control Panel	0.00	0.00	0.00	0.00	0.00
Total 9200 · Main Plant Equipment Capital	0.00	43,688.94	43,688.94	25,713.67	69,402.61
9300 · Pumps & Lines Capital					
9314 · Portable Emergency Generators	0.00	0.00	0.00	0.00	0.00
Total 9300 · Pumps & Lines Capital	0.00	0.00	0.00	0.00	0.00
Total 9100 · Capital Expenditures	0.00	43,688.94	43,688.94	25,713.67	69,402.61
Total Other Expense	0.00	43,688.94	43,688.94	25,713.67	69,402.61
Net Other Income	0.00	-43,688.94	-43,688.94	-25,713.67	-69,402.61
Net Income	-14,770.35	-301,985.88	-316,756.23	-82,333.74	-399,089.97

4:07 PM
08/11/22
Accrual Basis

Sanitary Distr. No.5 of Marin Co.
Monthly O.T. Report
July 2022

Type	Date	Num	Name	Memo	Amount	Balance
Balf, Abigail						
Check	07/29/22	196	Balf, Abigail	4.50 Hrs. O.T. @ 1.5x	258.66	258.66
Check	07/29/22	196	Balf, Abigail	1.00 Hrs. O.T. @ 2.0x	76.64	335.30
Total Balf, Abigail					335.30	335.30
Bilsborough, Chad						
Check	07/14/22	182	Bilsborough, Chad	53.00 Hrs O.T. @ 1.5x	3,703.11	3,703.11
Check	07/29/22	197	Bilsborough, Chad	26.00 Hrs O.T. @ 1.5x	1,907.49	5,610.60
Check	07/29/22	197	Bilsborough, Chad	10.50 Hrs. O.T. @ 2.0x	1,027.11	6,637.71
Total Bilsborough, Chad					6,637.71	6,637.71
Cottrell, Rulon						
Check	07/14/22	184	Cottrell, Rulon	20.00 Hrs. O.T. @ 1.5x	1,966.20	1,966.20
Check	07/29/22	199	Cottrell, Rulon	16.00 Hrs. O.T. @ 1.5x	1,651.68	3,617.88
Total Cottrell, Rulon					3,617.88	3,617.88
Dohrmann, Robin						
Check	07/29/22	200	Dohrmann, Robin	19.25 Hrs. O.T. @ 1.5x	1,802.38	1,802.38
Check	07/29/22	200	Dohrmann, Robin	02.75 Hrs. O.T. @ 2.0x	343.31	2,145.69
Total Dohrmann, Robin					2,145.69	2,145.69
La Torre, Daniel P.						
Check	07/14/22	186	La Torre, Daniel P.	10.00 Hrs. O.T. @ 1.5x	891.75	891.75
Check	07/14/22	186	La Torre, Daniel P.	02.50 Hrs. O.T. @ 2.0x	297.25	1,189.00
Check	07/29/22	201	La Torre, Daniel P.	02.00 Hrs. O.T. @ 1.5x	187.26	1,376.26
Check	07/29/22	201	La Torre, Daniel P.	03.00 Hrs. O.T. @ 2.0x	374.52	1,750.78
Total La Torre, Daniel P.					1,750.78	1,750.78
Rosser, John						
Check	07/14/22	188	Rosser, John	02.00 Hrs. @ 1.5x	161.76	161.76
Check	07/14/22	188	Rosser, John	00.50 Hrs. @ 2.0x	53.92	215.68
Check	07/14/22	188	Rosser, John	40.00 Hrs. Comp Buy-Back (was to be total amount vs. hrly ...	53.92	269.60
Check	07/15/22	193A	Rosser, John	02.00 Hrs. @ 1.5x	161.76	431.36
Check	07/15/22	193A	Rosser, John	00.50 Hrs. @ 2.0x	53.92	485.28
Check	07/15/22	193A	Rosser, John	40.00 Hrs. Comp Buy-Back (was to be total amount vs. hrly ...	53.92	539.20
Check	07/16/22	193	Rosser, John	02.00 Hrs. @ 1.5x	161.76	700.96
Check	07/16/22	193	Rosser, John	40.00 Hrs. Comp Buy-Back (was to be total amount vs. hrly ...	2,156.80	2,857.76
Total Rosser, John					2,857.76	2,857.76
Triola, Joseph						
Check	07/29/22	206	Triola, Joseph	02.00 Hrs. O.T. @ 1.5x	169.86	169.86
Check	07/29/22	206	Triola, Joseph	01.00 Hrs. O.T. @ 2.0x	113.24	283.10
Total Triola, Joseph					283.10	283.10
TOTAL					17,628.22	17,628.22



This proposal is made on July 22, 2022, by and between DKF Solutions Group, LLC (hereinafter referred to as DKF) and the Sanitary District #5 (District). This proposal is valid until September 31, 2022.

CLIENT CONTACT: Tony Rubio <trubio@sani5.org>

QUALIFICATIONS: DKF Solutions Group, LLC or its principals, have provided risk control consulting services, including CalOSHA and CA State Water Resources Control Board (SWRCB) compliance, for the following public agency risk pools:

- CA Sanitation Risk Management Authority (CSRMA) and their 60 sanitation district members since 1999.
- Redwood Empire Municipal Insurance Fund (REMIF) and their 15 members cities since 2008.
- Small Cities Organized Risk Effort (SCORE) and their 18 member cities since 2013.
- Association of Bay Area Governments Pooled Liability Insurance Network (ABAG PLAN) and their 29 member cities since 2004.
- CA Joint Powers Risk Management Authority (CJPRMA) and their ~100 member entities since 2007.

DKF Solutions Group's qualifications also include:

- Principals have over 50 years combined experience providing full-range CalOSHA and SWRCB compliance services.
- Clients include over 300 cities and special districts in California. Services provided include, among others, CalOSHA and SWRCB compliance.
- Annually trains more 1,000 public works and water/wastewater utilities employees on topics related to CalOSHA and SWRCB compliance.

SCOPE: The District has requested a proposal to provide the CalOSHA compliance services as described on Attachment 1.

DELIVERABLE(S): As described on Attachment 1.

CLIENT RESPONSIBILITIES:

1. The District will provide staff time to work with DKF to gather technical information necessary to complete SCOPE. The staff provided by District will have the technical knowledge, expertise, and/or written materials necessary for DKF to make technically correct evaluations.
2. All meetings or other work involving DKF, District and District-provided vendors will be scheduled at mutually agreeable dates and times.

SUBCONTRACTORS: DKF routinely subcontracts with subject matter experts in order to provide the highest quality policy and procedure development and training services. DKF reserves the right to subcontract subject matter experts in instances where the District will be best served by subcontracting a particular service.

COMPENSATION: DKF will invoice District upon delivery of services described on Attachment 1. All invoices are due net 30.

AVAILABILITY: DKF Solutions Group is available on or after July 22, 2022 to provide the services described on Attachment 1.0.

STANDARD OF CARE/WARRANTY: DKF Solutions Group will perform the work under this Agreement as an independent contractor and in accordance with generally accepted professional practices. DKF Solutions Group will utilize reasonable care and skill consistent with and equal to that customarily possessed by environmental, health and safety consulting professionals in the community.

The parties to this agreement recognize the complex, subjective, and performance-based nature of many environmental, occupational safety and health laws and regulations and the administrative interpretations thereof. In performance of the work, DKF Solutions Group must rely upon information derived from secondary sources and personal interviews. Except as specifically required in the scope of work, DKF Solutions Group will make no independent investigation as to the accuracy or completeness of the information derived from the secondary sources and personal interviews and will assume that such information is accurate and complete.

All recommendations, findings, and conclusions will be based upon information and circumstances as they existed at the time of preparation (e.g. Federal, state, and local laws; political climate; and other matters that DKF Solutions Group, LLC deemed relevant). A change in any fact or circumstance may adversely affect the recommendations, findings, and conclusions expressed in the WORK. Accordingly, except as set forth in the first paragraph of this section, DKF Solutions Group makes no other representation, warranty or guarantee, express or implied.

ACCEPTANCE: To accept this quote from DKF Solutions Group, LLC, for services described in SCOPE under the terms and conditions described herein, please sign below and return.

Name and Title of SD5 Representative

Date

Attachment 1.0: Sanitary District 5 - Proposal #2207131-1

Item #	Item description	Cost Each	Notes
1	Bloodborne Pathogens companion online training course	\$ 1,300.00	Fees for companion online training courses includes two draft reviews. Each additional review to be billed at \$300. Each course will be placed on the District's Vector Solutions account for employee access and training management.
2	Chemical Hygiene Plan companion online training course	\$ 1,600.00	
3	Confined Space companion online training course	\$ 1,800.00	
4	Covid-19 companion online training course	\$ 1,300.00	
5	Electrical Safety - Low Voltage companion online training course	\$ 1,300.00	
6	Emergency Action Plan companion online training course	\$ 1,300.00	
7	Fall Protection companion online training course	\$ 1,600.00	
8	First Aid/CPR/AED companion online training course	NA	
9	Forklift companion online training course	NA	
10	Fire Prevention companion online training course	\$ 1,300.00	
11	Lockout/Tagout companion online training course	\$ 1,600.00	
12	Hazard Communication companion online training course	\$ 1,600.00	
13	Hearing Conservation companion online training course	\$ 1,600.00	
14	Heat Illness Prevention companion online training course	\$ 1,300.00	
15	HIPP companion online training course	\$ 1,300.00	
16	Respiratory Protection companion online training course	\$ 1,600.00	
17	Traffic Control companion online training course	\$ 1,300.00	
18	Transite Pipe companion online training course	NA	
19	Provide 4hours of classroom and hands-on instruction on confined space entry in accordance with CCR Title 8 5157.	\$ 3,200.00	The fee will provide training for up to 12 employees.
20	Provide classroom training for qualified low voltage electrical workers.	\$ 3,400.00	
21	Provide 6hours of fall protection competent person training for up to 12 employees.	\$ 3,000.00	
22	Provide forklift operator training and qualification for up to 12 employees.	\$ 3,600.00	
23	Provide 4hours of initial transite pipe training for up to 5 employees.	\$ 2,600.00	
24	Provide 2 of refresher transite pipe training for up to 5 employees.	\$ 2,000.00	
25	Provide 1st aid/cpr/aed training for up to 12 employees.	\$ 2,400.00	
26	Provide traffic control/flagger training for up to 10 employees.	\$ 2,800.00	
27	Develop a New Employee Safety Orientation online training course and post to the District's Vector Solutions account.	\$ 3,000	Fee includes two draft report reviews. Each additional review to be billed at \$300.
28	Develop a Contractor Safety Orientation online training course and post to the District's Vector Solutions account.	\$ 2,400	Fee includes two draft report reviews. Each additional review to be billed at \$300.
29	Annual audiogram for 12 employees.	\$ 2,000	This is an estimate - actual cost may differ based on audiogram vendor 2022 costs.
30	Annual respiratory fit testing for up 12 employees.	\$ 2,000	This is an estimate - actual cost may differ based on fit testing vendor 2022 costs.
31	Develop a Contractor Safety Policy reflecting District safety rules//requirements and CalOSHA's Multi-Employer Worksite Safety requirements.	\$ 2,400	Fee includes two draft report reviews. Each additional review to be billed at \$300.
Total Estimated Fee		\$ 56,600.00	

License #1040899

Customer:	Date:
Project:	Quote Number:

BILL TO	
Contact Name:	
Phone:	Email:
Location:	

JM Integration LLC is pleased to submit this proposal for services to support you in achieving your goals for improving customer satisfaction by providing the following scope of work listed below.

SCOPE OF WORK

The following table details the pricing for delivery of the services outlined in this proposal. This pricing is valid for 30 days from the date of this proposal:

PRICING DESCRIPTION	
Labor	
Travel	
Materials	
Tools & Equipment	
Total	

The prices listed in the preceding table are an estimate for the services discussed. This summary is not a guarantee of final price. Estimates are subject to change if project specifications are changed or costs for outsourced services change before a contract is executed. We look forward to working with you and supporting your efforts to improve and maintain your system. If you have questions on this proposal, please contact me at your convenience.

Thank you for your time and consideration,

Jack Miller | Owner | JM Integration LLC

License #1040899

TERMS AND CONDITIONS

Base Terms: Quotation is valid for 30 days from above date. Our terms are due and payable 30 days from date of invoice. Payments must be made on a minimum of a monthly basis. If payment is not received by the 30th day, a 1.5% monthly service charge (18% annually) will be charged on all accounts past due. Attorney's fees, court costs and costs of collection will be paid to prevailing party. Permits and bonding are excluded unless otherwise noted herein. Our standard insurance applies unless agreed to in writing by JM Integration LLC. We accept no responsibility for consequential damages and our standard warranty applies. Please reference the above stated quote in all correspondence and purchase orders. Unless otherwise noted, this quote is based on standard straight time hours and does not include any prevailing wage rates unless agreed in writing by JM Integration LLC. The price quoted herein is for the labor and materials specifically listed within the body of this quote. Service calls carry a 4-hour minimum per person. Cancellation charges apply including engineering, labor, materials, quote and estimating time, markup, % of profit, return goods fees, etc. at the time of written cancellation notice to JM Integration LLC.

Limitation of Liability: (a) In no event shall JM Integration LLC, its suppliers or subcontractors be liable for special, indirect, incidental or consequential damages, whether in contract, warranty, tort, negligence, strict liability or otherwise, including, but not limited to, loss of profits or revenue, loss of use of the Equipment or any associated equipment, cost of capital, cost of substitute equipment, facilities or services, downtime costs, delays, and claims of customers of the Purchaser or other third parties for any damages. JM Integration LLC liability for any claim whether in contract, warranty, tort, negligence, strict liability, or otherwise for any loss or damage arising out of, connected with, or resulting from this Agreement or the performance or breach thereof, or from the design, manufacture, sale, delivery, resale, repair, replacement, installation, technical direction of installation, inspection, operation or use of any equipment covered by or furnished under this Agreement, or from any services rendered in connection therewith, shall in no case exceed one-fourth (1/4) of the purchase price allocable to the Equipment or part thereof or Services which gives rise to the claim. (b) All causes of action against JM Integration LLC arising out of or relating to this Agreement or the performance or breach hereof shall expire unless brought within one year of the time of accrual thereof. (c) In no event, regardless of cause, shall JM Integration LLC be liable for penalties or penalty clauses of any description or for indemnification of Purchaser or others for costs, damages, or expenses arising out of or related to the Equipment and/Services.

Force Majeure: JM Integration LLC shall neither be liable for loss, damage, detention or delay nor be deemed to be in default for failure to perform when prevented from doing so by causes beyond its reasonable control including but not limited to acts of war (declared or undeclared), Acts of God, fire, strike, labor difficulties, acts or omissions of any governmental authority or of Purchaser, compliance with government regulations, insurrection or riot, embargo, delays or shortages in transportation or inability to obtain necessary labor, materials, or manufacturing facilities from usual sources or from defects or delays in the performance of its suppliers or subcontractors due to any of the foregoing enumerated causes. In the event of delay due to any such cause, the date of delivery will be extended by period equal to the delay plus a reasonable time to resume production, and the price will be adjusted to compensate JM Integration LLC for such delay.

Cancellation: Any order may be cancelled by Purchaser only upon prior written notice and payment of termination charges, including but not limited to, all costs identified to the order incurred prior to the effective date of notice of termination and all expenses incurred by JM Integration LLC attributable to the termination, plus a fixed sum of ten (10) percent of the final total price to compensate for disruption in scheduling, planned production and other indirect costs.

Entire Agreement: This Agreement constitutes the entire agreement between JM Integration LLC and Purchaser. There are no agreements, understandings, restrictions, warranties, or representations between JM Integration LLC and Purchaser other than those set forth herein or herein provided

Bonding: Cost of Bonding is not included. Contact JM Integration LLC for a quote if bonding is required.

SIGNATURE	PRINT NAME	DATE

SIGNATURE	PRINT NAME	DATE

Sanitary District No. 5 of Marin County



District Management Report

July 2022

Contents:

- Transmittal Memo
- Financial/Budgetary
- HR & Personnel
- Business Administration
- Collection System Performance
- Treatment Plant Performance – Paradise Cove
- Treatment Plant Performance – Main Plant
- Pollution Prevention Activities
- Continuing Education & Safety Training
- Capital Improvement Projects

Transmittal Memo

Date: July 21, 2022
To: Board of Directors
From: Tony Rubio, District Manager
Subject: Management Report for June 2022

Fiscal Status

Period Covered: July 1, 2022 –July 31, 2022
Percent of Fiscal Year: 8%
Percent of Budgeted Income to Date: 2.2%
Percent of Budgeted Expenditures to Date: % (operating only)

Personnel

Separations: None
New Hires: None
Promotions: None
Recruitment Activities: 1

Regulatory Compliance

MP Collection System WDR Compliance: Full Compliance with all regulations
PC Collection System WDR Compliance: Full Compliance with all regulations
MP NPDES Permit Compliance: Full Compliance with all regulations
PC NPDES Permit Compliance: Full Compliance with all regulations
BAAQMD Compliance: Full Compliance with all regulations
Significant Comments: None

Summary of Operational Highlights are on the following pages.

Significant Events for the Month of July 2022 Include:

Financial/Budgetary/Business Administration

- Board and committee meetings will continue to be held virtually in compliance with AB361 and status of need will be reviewed every month.
- Preparation for end of fiscal year audit 21-22

HR and Personnel

- Recruitment of Operator ongoing

Continuing Education and Safety Training.

- Work with DKF solutions on District safety program updates on going -Hot Work policies under review.

Collection System Performance

Main Plant Tiburon/Belvedere:

- Submitted 2 Category 3 SSOs for the month of June to RWQCB on CIWQS (10 gallons and 100 gallons 9 Lyford and 62 Marinero)

Paradise Cove:

- Submitted No Spill report for month of June to RWQCB on CIWQS

Treatment Plant Performance

Paradise Cove:

- plant lighting project nearly complete (safety)
- Submitted 2nd Quarter SMR and DMR to the RWQCB on CIWQS

Main Plant:

- Submitted June 2022 Monthly SMR and DMR to the RWQCB on CIWQS

Pollution Prevention Activities

- Remote meetings with P2 Group

Capital Improvement Projects

- 2022 Sewer Rehab Bids Received
- Received Proposal for DW and WW tank work

Glossary of Terms

- **B.O.D. (Biochemical Oxygen Demand):** Measurement of the effluent's capacity to consume dissolved oxygen to stabilize all remaining organic matter. The permit limits for our effluent for discharge into San Francisco bay require that we remove 85% influent B.O.D. and meet a weekly average of less than 45mg/l and a monthly average of less than 30 mg/l B.O.D.
- **TSS (Total Suspended Solids):** Measurement of suspended solids in the effluent. Our permit requires that we remove at least 85% of the influent TSS and that the effluent limit is less than 45 mg/l as a weekly average and less than 30 mg/l as a monthly average.
- **Chlorine Residual:** The plant effluent is disinfected with hypochlorite (chlorine "bleach") and then the residual chlorine is neutralized with sodium bisulfite to protect the bay. The effluent chlorine residual limit is 0.0 mg/l which we monitor continuously.
- **pH:** pH is a measurement of acidity with pH 7.0 being neutral and higher pH values being basic and lower pH values being acidic. Our permit effluent pH must stay within the range of 6.0-9.0, which we monitor continuously.
- **Coliform:** Coliform bacteria are the indicator organism for determination of the efficiency of the disinfection process. The lab culture samples of our effluent and the presence of coliform is an indication that pathogenic organisms may be present. This is reported as MPN/100 (number of coliform bacteria in 100 milliliters sample).
- **Flow Through Bioassay:** A 96 hour test in which we test the toxicity of our effluent to tiny fish (sticklebacks) in a flow through tank to determine the survivability under continuous exposure to our effluent. Our permit requires that we maintain a 90th percentile survival of at least 70% and an 11 sample median survival of at least 90%. In layman's terms, this means that out of the last 11 samples only one bioassay may fall below 70% survival and the middle value when all 11 samples are placed in numerical order must be at least 90%.
- **Metals Analysis:** Our permit requires that we analyze our effluent for many different metals on a monthly basis. We have permit limits for some metals. The metals are stated as a daily max and a monthly average limit. The daily max limit is the number we cannot exceed on any sample and the monthly average applies to all samples collected in any month. (although usually we are only required to take one).
- **F.O.G. (Fats, oils and grease):** Quarterly we are required to monitor our effluent for Fats, Oils and Grease.

Glossary of terms continued...

- **Headworks:** The point where all raw wastewater enters the treatment plant. In this building wastewater goes through 3 grinders to grind up all large objects that could possibly damage our influent and sludge pumps further down the treatment process.
- **Primary Sedimentation:** The next treatment process is a physical treatment process where solids that settle or float are removed and sent to the digesters for further processing.
- **Activated Sludge:** Next is the activate sludge process. This process is a biological wastewater treatment process that uses microorganisms to speed up the decomposition of wastes. When activated sludge is added to wastewater, the microorganisms feed and grow on waste particles in the wastewater. As the organisms grow and reproduce, more and more waste is removed, leaving the wastewater partially cleaned. To function efficiently, the mass of organisms needs a steady balance of food and oxygen. These tasks are closely monitored by the operations staff.
- **Secondary Clarification:** Next is secondary clarification, like primary sedimentation/clarification, this also is a physical treatment process where solids that settle or float are removed and sent to the next treatment process. The difference between Secondary Clarification and primary sedimentation is that the solids removed from the secondary clarifiers goes to 2 places. Some goes to waste to the DAFT and some goes back to the activated sludge process for further treatment. (*Microorganisms must be returned to the activated sludge process to keep an equal balance of food and microorganisms*).
- **DAFT (dissolved air floatation thickener):** Next is the DAFT. The dissolved air floatation thickening process uses air bubbles to thicken WAS(waste active sludge) solids removed from the secondary clarifier, by floating solids to the tank surface, where they are removed and sent to the digesters for final processing.
- **Sludge Digestion:** In the anaerobic digestion process, all the organic material removed from the primary sedimentation tanks and DAFT's are digested by anaerobic bacteria. The end products are methane, carbon dioxide, water and neutralized organic matter.
- **Solids Handling:** This is the process where all the neutralized sludge from the digester is finally treated. Sludge from the digester is pumped to the screw press where it is conditioned with a polymer (chemical that reacts with the sludge to remove the water from the sludge and bind the sludge particles together) in order to dewater the sludge and produce a dry cake for final disposal to the Redwood landfill.

Glossary of terms continued...

- **Disinfection:** This is the end point for the wastewater- at this point wastewater flows through the chlorine contact tank. This contact tank allows for enough contact time for chlorine solution to disinfect the wastewater. Sodium bisulfite is introduced at the end of the tank to neutralize any residual chlorine to protect the bay.
- **MLSS (mixed liquor suspended solids):** Suspended solids in the mixed liquor of an aeration tank measured in mg/l
- **MCRT (mean cell resident time):** An expression of the average time that a microorganism will spend in the activated sludge process.
- **SVI (sludge volume index):** This is a calculation used to indicate the settling ability of activated sludge in the secondary clarifier.
- **RAS (return activated sludge):** The purpose of returning activated sludge, is to maintain a sufficient concentration of activated sludge in the aeration tank.
- **WAS (waste activated sludge):** To maintain a stable process, the amount of solids added each day to the activated sludge process are removed as WAS. We track this by our MCRT which averages 3 days
- **TWAS (thickened waste activated sludge):** The WAS is thickened in the DAFT and the thickened sludge is then pumped to the digester.
- **MPN (most probable number):** Concentrations of total coliform bacteria are reported as the most probable number. The MPN is not the absolute count of the bacteria but a statistical estimate of their concentration.
- **Bio-solids:** Anaerobic digested sludge is pumped to a screw press where excess water is removed to reduce the volume (and weight) thus producing an end result called bio-solids.
- **Polymer:** Organic polymers are added to digested sludge to bring out the formation of larger particles by bridging to improve processing.

Wastewater Acronyms

ACWA	Assoc of California Water Agencies	APWA	American Public Works Association
AWWA	American Water Works Association	BAAQMD	Bay Area Air Quality Management District
BACWA	Bay Area Clean Water Agencies	BAPPG:	Bay Area Pollution Prevention Group
CASA	California Association of Sanitation Agencies	CSDA	California Special Districts Association
CSRMA:	California Sanitation Risk Management Authority	CAAQS	California Ambient Air Quality Standard
CalARP	California Accidental Release Prevention Program	CARB	California Air Resources Board
CDO	Cease and Desist Order	CECs	Constituents of Emerging Concern
CEQA	California Environmental Quality Act	CIWQS	California Integrated Water Quality System
CFR	Code of Federal Regulations	CMOM	Capacity, Management, Operation and Maintenance
CIWMB	California Integrated Waste Management Board	CPUC	California Public Utilities Commission
CSO	Combined Sewer Overflow	CTR	California Toxics Rule
CWA	Clean Water Act	CWAP	Clean Water Action Plan
CWARA	Clean Water Authority Restoration Act	CWEA	California Water Environment Association
DHS	Dept of Health Services	DTSC	Dept of Toxic Substances Control
EBEP	Enclosed Bays and Estuaries Plan	EDW	Effluent Dominated Water body
EIS/EIR	Environmental Impact Statement/Report	EPA	Environmental Protection Agency
ERAF	Educational Reserve Augmentation Fund	ESMP	Electronic Self-Monitoring Report
FOG	Fats, Oils and Grease	GASB	Government Accounting Standards Board
ISWP	Inland Surface Waters Plan	JPA	Joint Powers Authority
LAFCO	Local Agency Formation Commission	LOCC	League of California Cities
MACT	Maximum Achievable Control Technology (air controls)	MCL	Maximum Contaminant Level
MMP	Mandatory Minimum Penalty	MOU	Memorandum of Understanding
MUN	Municipal Drinking Water Use	NACWA	National Association of Clean Water Agencies
NGOs	Non Governmental Organizations	NOX	Nitrogen Oxides
NPDES	Nat'l Pollutant Discharge Elimination System	NRDC	Natural Resources Defense Council
NTR	National Toxics Rule	OWP:	Office of Water Programs
OSHA:	Occupational Safety and Health Administration	PCBs	Poly Chlorinated Biphenyls
POTWs	Publicly Owned Treatment Works	PPCPs	Pharmaceutical and personal Care Products
QA/QC	Quality Assurance / Quality Control	Region	IX Western Region of EPA (CA, AZ, NV & HI)
RFP	Request For Proposals	RMP	Risk Management Program
RFQ	Request For Qualifications	RWQCB	Regional Water Quality Control Board
SEP	Supplementary Environmental Projects	SIP	State Implementation Policy (CTR/NTR criteria)
SFEI:	San Francisco Estuary Institute	SRF	State Revolving Fund
SSO	Sanitary Sewer Overflow	SSMP	Sewer System Management Plan
SWRCB	State Water Resources Control Board	TMDL	Total Maximum Daily Load
WDR	Waste Discharge Requirements	WEF	Water Environment Federation
WERF	Water Environment Research Foundation	WET	Whole Effluent Toxicity or Waste Extraction Test
WMI	Watershed Management Initiative	WRFP	Water Recycling Funding Program
WRDA	Water Resource Development Act	WWTP	Wastewater Treatment Plant
WQBEL	Water Quality Based Effluent Limitation Agency	WWWIFA	Water and Wastewater Infrastructure Financing

Agenda – Notes of ExplanationSanitary District No. 5 Regular Board MeetingAugust 18, 2022Consideration of Award of Construction Contract to Hardiman Construction Inc for the 2022 Sewer Rehabilitation Project**STAFF REPORT:**

The 2022 Sewer Improvement Project consists of the rehabilitation of approximately 5,140 linear feet of deteriorated six-inch diameter sewer located in the Town of Tiburon and the City of Belvedere under the base bid. The pipe will be rehabilitated via pipe bursting, which will minimize disturbance to residential backyards where the sewer is located in easements. The notice inviting bids was advertised in July 2022, and bids were opened on August 28, 2022 at 2 pm. Actual construction is planned to begin in late August or early September 2022, prior to the wet weather season. The engineer's cost estimate for the project was \$1,417,649 for the base bid of 5,140 linear ft. of pipe rehabilitation.

On August 18, 2022, the District opened bids for the 2022 Sewer Rehabilitation Project. The Bid results are presented as follows:

<u>Contractor</u>	<u>Bid Amount (\$)</u>
Hardiman Construction, Inc.	\$1,216,204
Glosage Engineering Inc.	\$1,439,460
Bay Pacific Pipe Line Inc	\$1,283,204

The low bid is below the engineer's estimate of \$1,417,649, which was estimated based on historic bid results. Hardiman Construction bid results may reflect current market conditions and based on the engineer's review of recent Public Works' project bid results. The engineer has recommended award of the contract.

The previous sewer line project of fiscal year 20/21 came out to roughly \$280/linear ft. For comparison purposes, the current project, as bid, is roughly \$236/linear ft. Last year a total of 3 qualified contractors bid the 20/21 Sewer Rehabilitation project. This could be a result of a busy construction period in which the contractors are tied up with other projects and/or a lack of qualified personnel to do the work as it has been expressed in the construction industry this past year.

FISCAL IMPACT:

The award of the contract to the low bidder will result in the expenditure of approximately \$1,033,773 from the Tiburon Zone and \$182,430 from Belvedere Zone. The Fiscal Year 2022/23 capital budget for Tiburon and Belvedere sewer line rehabilitation are \$1,000,000 for Tiburon and \$100,000, for Belvedere respectively.

An additional \$33,773 will be needed from Tiburon Capital Reserves and \$82,430 from Belvedere Capital Reserves to complete this project

CEQA (California Environmental Quality Act)

Exempt

Recommendation:

Award Construction Contract for the 2022 Sewer Rehabilitation Project to Hardiman Construction for the low bid amount of \$1,216,204 and authorize the general manager to spend an additional \$116,203 from reserves.



Tony Rubio, District Manager

ATTACHMENT:

2022 Sewer Rehabilitation Project Bid List

BID SUMMARY

Bid Opening: 2:00 pm

Date: August 11, 2022

Job No:9005

Engineers Est: \$1,417,649

**SANITARY DISTRICT NO. 5
2022 SEWER REHABILITATION PROJECT
TIBURON AND BELVEDERE
RE-BID**

CONTRACTOR	AMOUNT
Bay Pacific Pipeline, inc	1,283,130
Hardiman Construction	1,216,204
Glosage Engineering Inc.	1,439,460



August 15, 2022

Mr. Tony Rubio, District Manager
Sanitary District No. 5
2001 Paradise Drive
Tiburon, CA 94920

Re: 2022 Sewer Rehabilitation Project - Tiburon and Belvedere – **RE-BID**

Dear Tony:

On August 11, 2022 three bids were received for the above-referenced project. A spreadsheet comparing these bids is enclosed.

The lowest apparent Base Bid of \$1,216,204 was submitted by Hardiman Construction of Larkspur, California. Hardiman Construction also turned in the lowest total bid including the Base Bid and Alt Bid.

Enclosed is the license detail obtained from the Contractor's License Board which shows that both Hardiman Construction and their Subcontractors have valid Contractor's Licenses and are both registered with the California Department of Industrial Relations (DIR). The second and third contractors qualify also.

We have reviewed all of the bids from the first three bidders (see attached Bid Results spreadsheet) and recommend awarding the contract to Hardiman Construction.

Very truly yours,

NUTE ENGINEERING

By: 

Mark T. Wilson, PE

SANTARY DISTRICT NO. 5
 MARIN COUNTY, CALIFORNIA
 2022 SEWER REHABILITATION PROJECT REBID
 TIBURON AND BELVEDERE

Bid Opening: 2:00 pm
 Date: August 11, 2022
 Job No: 9005
 Engineer's Est: \$1,417,649

No.	Tib Quant	Belv Quant	Total Quantity	U/M	Description	Hardiman Construction Larkspur		Glosage Engineering Richmond		Bay Pacific Pipeline Novato	
						1		2		3	
						Unit Price	Total Amount	Unit Price	Total Amount	Unit Price	Total Amount
1.	50%	50%	100%	LS	Mobilization, Demobilization, SWPPP	9,000.00	\$9,000	32,000.00	\$32,000	30,000.00	\$30,000
2.	4,278	862	5,140	LF	Pre-Clean and Pre-Televise Sewer Mains	2.00	\$10,280	3.00	\$15,420	5.00	\$25,700
3.	579	0	579	LF	A-Line 6.63" Od Hdpe Sewer Main From Mh359 To Mh 359c, Mh359c To Mh643, Mh360 To Mh643	220.00	\$127,380	198.00	\$114,642	165.00	\$95,535
4.	3,549	862	4,411	LF	Lines B Thru H And Lines K Thru R 6.63" Od Hdpe Sewer Main - Pipeburst	190.00	\$838,090	195.00	\$860,145	165.00	\$727,815
5.	10	5	15	EA	Air Gap For Pipebursting At Utility Crossing	1,500.00	\$22,500	1,800.00	\$27,000	100.00	\$1,500
6.	1	0	1	EA	Install (N) Standard 4' Diameter Manholes	15,500.00	\$15,500	8,400.00	\$8,400	2,800.00	\$2,800
7.	11	6	17	EA	Install (N) Shallow Manholes	3,400.00	\$57,800	4,600.00	\$78,200	2,300.00	\$39,100
8.	1	0	1	EA	Remove Existing Manholes	2,500.00	\$2,500	1,000.00	\$1,000	1,000.00	\$1,000
9.	26	5	31	EA	Connect To Existing Manholes, Replace Rim And Cover And Grade Rings, Rebuild Channels	1,500.00	\$46,500	1,300.00	\$40,300	2,000.00	\$62,000
10.	1	0	1	LS	Connect New 6.63" Od Hdpe Line K Sewer To Existing Concrete Vault	10,000.00	\$10,000	7,200.00	\$7,200	3,000.00	\$3,000
11.	7	6	13	EA	Remove And Dispose Of Rodholes	500.00	\$6,500	250.00	\$3,250	500.00	\$6,500
12.	105	14	119	EA	Locate & Pothole Existing Laterals	100.00	\$11,900	50.00	\$5,950	200.00	\$23,800
13.	105	14	119	EA	4" Lateral Cleanouts And Cleanout Box	10.00	\$1,190	1,000.00	\$119,000	200.00	\$23,800
14.	1,100	150	1,250	LF	4" Lateral, Fittings & Connections - Pipeburst	10.00	\$12,500	10.00	\$12,500	55.00	\$68,750
15.	147	6	153	LF	Curb And Gutter And Ac Curb Replacement	40.00	\$6,120	40.00	\$6,120	60.00	\$9,180
16.	217	16	233	SF	Concrete Sidewalk And Driveway Approach Replacement	20.00	\$4,660	35.00	\$8,155	70.00	\$16,310
17.	229	33	262	TON	Asphalt Concrete Trench Repair And Replacement Of Pavement Markings	20.00	\$5,240	195.00	\$51,090	260.00	\$68,120
18.	1	1	1	LS	Shoring For All Excavations	5,000.00	\$5,000	5,000.00	\$5,000	15,000.00	\$15,000
19.	14	6	20	EA	Pothole Utility Mains	100.00	\$2,000	1,000.00	\$20,000	750.00	\$15,000
20.	1	1	1	LS	Traffic Control And Notifications	10,000.00	\$10,000	9,000.00	\$9,000	10,500.00	\$10,500
21.	1	1	1	LS	Permits And Licenses	5,000.00	\$5,000	2,000.00	\$2,000	5,000.00	\$5,000
22.	4,432	862	5,294	LF	Cleaning And Televising Of Completed Sewer Mains	1.00	\$5,294	2.00	\$10,588	5.00	\$26,470
23.	1,100	150	1,250	LF	Internal Televising Of Completed Lower Sewer Laterals	1.00	\$1,250	2.00	\$2,500	5.00	\$6,250
BASE BID TOTAL						\$1,216,204		\$1,439,460		\$1,283,130	

ALTERNATE BID A											
No	Tib Quant	Belv Quant	Quant	U/M	Item Description	Unit Price	ALT BID Total Amount	Unit Price	ALT BID Total Amount	Unit Price	ALT BID Total Amount
A-1	150	0	150	LF	A-Line 6.63" OD HDPE Sewer Main MH643 to MH360 Pipe Segment - Pipeburst	\$320.00	\$48,000	\$198.00	\$29,700	\$170.00	\$25,500
ALTERNATE A BID TOTAL							\$48,000		\$29,700		\$25,500
BASE BID AND ALTERNATE BID TOTAL							\$1,264,204		\$1,469,160		\$1,308,630

Check if Bid Item 1 is less than 5% of total cost	0.74%		2.22%		2.34%
Addendum Acknowledge	None		None		None
Bid Signed	y		y		y
Contractors License Number	1065111		1028046		524020
Bid Bond	check in lieu of Bid Bond		y		y
DIR Registration Number	1000431063		1000051960		1000009198
Subcontractors (list License/DIR #s if included)	Roy's Sewer Service, 491815		NONE		Roy's Sewer Service, 491815
	B.A.T.S, 917034				
	ABSL Construction, A621781				
Site Visit Affidavit	y		y		y
Major Equipment and Materials Suppliers	y		y		y
Certification of Drug-Free Workplace	y		y		y
Certification of Bidder's Experience and Qualifications	y		y		y
3-year Average EMR ≤ 1.1	0.74		0.91		1.15
3-Year Average RIR ≤ 5.5	1.25		0		0
3-Year Average LTIR ≤ 3.1	1.25		0		0
Financial Statement Submitted	y		y		y
Non-Collusion Affidavit	y		y		y
Safety Compliance Affidavit	y		y		y

▼ Contractor's License Detail for License # 1065111

DISCLAIMER: A license status check provides information taken from the CSLB license database. Before relying on this information, you should be aware of the following limitations.

- ▶ CSLB complaint disclosure is restricted by law ([B&P 7124.6](#)) If this entity is subject to public complaint disclosure click on link that will appear below for more information. Click [here](#) for a definition of disclosable actions.
- ▶ Only construction related civil judgments reported to CSLB are disclosed ([B&P 7071.17](#)).
- ▶ Arbitrations are not listed unless the contractor fails to comply with the terms.
- ▶ Due to workload, there may be relevant information that has not yet been entered into the board's license database.

Data current as of 6/24/2022 3:15:26 PM

Business Information

HARDIMAN CONSTRUCTION INC
DBA TRENCHLESS TITAN

3 HEATHER WAY
LARKSPUR, CA 94939
Business Phone Number:(415) 924-2555

Entity Corporation
Issue Date 04/09/2020
Expire Date **04/30/2024**

License Status

This license is current and active.

All information below should be reviewed.

Classifications

A - GENERAL ENGINEERING

Bonding Information

Contractor's Bond

This license filed a Contractor's Bond with [EVEREST REINSURANCE COMPANY](#).

Bond Number: ES00004156

Bond Amount: \$15,000

Effective Date: 03/20/2020

Bond of Qualifying Individual

The qualifying individual THOMAS GERALD HARDIMAN certified that he/she owns 10 percent or more of the voting stock/membership interest of this company; therefore, the Bond of Qualifying Individual is not required.

Effective Date: 04/09/2020

Workers' Compensation

This license has workers compensation insurance with the [BENCHMARK INSURANCE COMPANY](#)

Policy Number: CST5022143

Effective Date: 08/24/2021

Expire Date: 08/24/2022

[Workers' Compensation History](#)

Other

- ▶ Personnel listed on this license (current or disassociated) are listed on other licenses.

Contractor Information

Registration History

Legal Entity Name

Thomas Gerald Hardiman

Legal Entity Type

General Partnership

Status

Active

Registration Number

PW-LR-1000431053

Registration effective date

7/1/2021

Registration expiration date

6/30/2024

Mailing Address

3 Heather Way Larkspur 94939 CA United States ...

Physical Address

3 Heather Way Larkspur 94939 CA United States ...

Email Address**Trade Name/DBA**

Hardiman Construction Trenchless Titan

License Number(s)

CSLB:611970

Effective Date	Expiration Date
7/1/2019	6/30/2021
7/1/2021	6/30/2024

Legal Entity Information

Partner Legal Entity Name:Thomas Hardiman**Partner Legal Entity Type:**General Partnership

Partner Legal Entity Name:Melissa Hardiman**Partner Legal Entity Type:**General Partnership

Workers Compensation

Do you lease employees No

through Professional Employer Organization (PEO)?:

Please provide your current workers compensation insurance information below:

PEO Information	PEO Name	PEO Phone	PEO Email

Insured by Carrier

Policy Holder Name:Hardiman Construction Trenchless Titan**Insurance Carrier:**

Benchmark Insurance Company**Policy Number:**CST5019893**Inception date:**8/24/2020

Expiration Date:8/24/2021

Agenda – Notes of Explanation
Sanitary District No. 5 Regular Board Meeting
August 18, 2022

Review and discuss proposal from Hallsten regarding the Dry Weather Primary Sedimentation Cover Replacement Project and the Proposal from DC Frost Associates regarding the helical skimmer replacement project for both Dry Weather Primary Sedimentation Tanks. Accept proposal and authorize District Manager to schedule projects and procurement of equipment.

STAFF REPORT:

The Districts Dry Weather tank (primary sedimentation tank) is scheduled to have the large heavy fiberglass covers to be replaced with easy to lift light aluminum covers. The reasoning behind this project #1 is due to safety concerns and #2 for operational efficiencies and prolonged equipment life due to easy inspection and maintenance tasks. As for the helical scum collector, there is attached photos that are self-explanatory for the reason for the replacement of those units. These helical scum collectors were not replaced during the Main Plant Rehab.

FISCAL IMPACT:

\$124,500 for the aluminum covers in which \$100k is approved in the FY 22-23 budget

\$72,029 for the helical skimmers in which is a unbudgeted item.

The aluminum covers will require an additional \$25,000 from Capital Reserves and \$75,000 from Capital Reserves for the helical skimmers.

CEQA (California Environmental Quality Act)

Exempt

Recommendation:

Approve the use of an additional \$100,000 (unbudgeted) from Main Plant Capital Reserves for the Dry Weather Sedimentation Tank work (covers and helical).



Tony Rubio, District Manager

ATTACHMENT:

Hallsten Proposal

DC Frost Proposal



















Wednesday, July 13, 2022

Project: Sanitary District #5 of Marin County, Tiburon CA.

MATERIAL SCOPE
ALUMINUM COVERS

(Hallsten Standard Product Specification for Aluminum Covers as Set Forth Below)

Clarifier Area:

- Two (2) approximately 10'-6" x 10'-6" rectangular Hallsten surface mounted aluminum cover system. Cover systems to contain four (4) standard Hallsten gear hinge hatches each, and one (1) penetration for off gas duct work supplied by others.
Two (2) approximately 10'-6" x 6'-6" rectangular Hallsten surface mounted aluminum cover system. Cover systems to contain two (2) standard Hallsten gear hinge hatches each, one (1) penetration for off gas duct work supplied by others, and notch out for scraper motor.
Two (2) approximately 10'-6" x 15'-6" rectangular Hallsten surface mounted aluminum cover system. Cover systems to contain six (6) standard Hallsten gear hinge hatches each, and one (1) penetration for off gas duct work supplied by others.
Two (2) approximately 10'-6" x 15'-6" rectangular Hallsten surface mounted aluminum cover system. Cover systems to contain six (6) standard Hallsten gear hinge hatches each, one (1) penetration for off gas duct work supplied by others, and notch out for scraper motor. This cover will have a five foot by ten foot raised area (approx. 4 inches) at the scum skimmer end.

Approximate Total Basin Square Footage: 1,008 Sq. Ft.

COVER MATERIAL DELIVERED ONLY PRICE:.....\$ \$124,500.00
INSTALLATION by HALLSTEN CORPORATION .. \$ Included
OPTION 1: Add a Hallsten standard hatch or penetration kit (Up to an 12" I.D. kit) to the cover system: ADD: \$ 625.00

Note: Removal and disposal of existing FRP covers is by others.

Note: The estimate of basin square footage is for informational purposes only. The price quoted above is for the total amount of the project and not based on a price per square foot of the material actually installed.

Including:

- Hallsten's patented double interlocking decking incorporating a permanent integral non-skid surface.
Hallsten's standard hatches as described above.
Hallsten's standard penetration kits as described above.
6061-T6 corrosion resistant aluminum alloy construction with mill finish.
316 stainless steel anchor bolts.
Designed for a 50-pound uniform live load, with an L/240 deflection limitation.
Designed for 400-pound concentrated load on a 6" x 6" square area.

- Panel weight limitation of 150 pounds.
- Santoprene gaskets. (UV stabilized)
- Production of shop drawings.
- Drawings and calculations signed and sealed by a California professional engineer.
- Delivery to job site.
- One site survey as required for fabrication of cover systems. (Others at additional cost.)
- Equipment and manpower to unload and install at the project site in Tiburon, CA.
- Hallsten Corporation one (1) year warranty.

Excluding:

- ⋄ Permits, bonds and licenses.
- ⋄ Sales tax. (Any applicable sales tax must be added to the total material delivered price above.)
- ⋄ Trash receptacle or dumpster.
- ⋄ Union agreements or labor.
- ⋄ Tank shutdown or sludge removal costs.
- ⋄ Onsite portable toilet, temporary office or phones.
- ⋄ On site cover testing of any kind.
- ⋄ Piping and ductwork.
- ⋄ Pipe Flanges or Curbs. (Other than the aluminum flanges included as described above.)
- ⋄ Pipe supports.
- ⋄ Loads greater than 50-pounds per square foot imposed on the cover system by pipe supports, slide gates, or other appurtenances.
- ⋄ Anodizing, painting or coatings of any kind.
- ⋄ Silicone sealants. (Hallsten uses Sikaflex 1A as an equal to this item.)
- ⋄ Hypalon gaskets. (Hallsten uses Santoprene, an extrudable form of Neoprene.)
- ⋄ Electrical work of any kind, including relocation of any conduit.
- ⋄ Confined space entry, equipment or certified personnel of any kind.
- ⋄ Concrete repairs and coatings.
- ⋄ Demolition or disposal of any existing equipment and/or handrail.
- ⋄ Handrail or relocation of handrail for cover clearance.
- ⋄ Walkways, Grating, Drains, or Checker plate.
- ⋄ Relocation of valves or actuators that cross the plane of cover and are not shown on contract drawing.
- ⋄ Signage of any kind.

Hallsten Corporation shall hold the price listed above for 90 days from the date at the top of this quotation. Estimated time frame for submittals is 8-9 weeks from receipt of an order. Estimated time frame for fabrication/delivery is 28 weeks from receipt of approved submittals and completed site survey.

Sincerely,



Mark Adams
Vice President Sales

DC Frost Associates, Inc
 subsidiary of Coombs Hopkins Company
 8706 South 700 East, Suite 201
 Sandy, UT 84070

Quotation

Date	Quote #
7/20/2022	105502

Bill To

Marin County Sanitation District #5
 Attn: Accounts Payable
 P.O. Box 227
 Tiburon, CA 94920

Ship To

Marin County Sanitation District #5
 Attn: Dan LaTorre (415-286-1477)
 2001 Paradise Drive
 Tiburon, CA 94920

E-mail: dlatorre@sani5.org
 Phone: 415-286-1477 (cell fo

Model		Equipment	Project/Serial #	FOB	
Helical		Polychem-Brentwood		Fact. PPA	
Line	Qty	Description		Unit Price	Total
a	1	Part, Two (2) FRP Helical Skimmers 18-inch Diameter x 10 FT Long - ***** SS is the same price as FRP right now. *ITEMS INCLUDED: HELICAL SKIMMER COMPONENTS Helical Reel FRP Wiper for Helical Reel EPDM Rubber Wall Bearings for Helical Skimmer Cast Iron w/UHMW-PE Lining Collar for Helical Skimmer Cast Nylon 6 w/set screw Drive Chain NH78, Reinforced Nylon Resin w/ 303 SS Pins Driven Sprocket 19T, Nylon ITEMS SPECIFICALLY NOT INCLUDED Drive Chain Collector Chain Hardware for Flights Chain to Flight Attachment Links Fillerblocks Wearing Shoes Flight Scrapers Spindles for Headshaft		65,120.00	65,120.00T
Quote Prepared By: Jeff Rabas				Total:	

PRICES QUOTED HEREIN ARE VALID FOR 30 DAYS.

PAYMENT TERMS: Net 30

If prices quoted do not include sales or use tax, such taxes, if required, are to be paid by the Purchaser.

DCF TERMS & CONDITIONS apply on all orders (copy available upon request).

Contact Jeff Rabas @ 303-710-9426 / jeff@chcwater.com
for Service Quotes, Maintenance Agreements or Questions about your equipment

Contact Info:

debby@chcwater.com or (720) 943-2995
 casey@chcwater.com or (760) 525-6139

Main #: (800) 964-9733
Fax #: (303) 477-1981

DC Frost Associates, Inc
 subsidiary of Coombs Hopkins Company
 8706 South 700 East, Suite 201
 Sandy, UT 84070

Quotation

Date	Quote #
7/20/2022	105502

Bill To

Marin County Sanitation District #5
 Attn: Accounts Payable
 P.O. Box 227
 Tiburon, CA 94920

Ship To

Marin County Sanitation District #5
 Attn: Dan LaTorre (415-286-1477)
 2001 Paradise Drive
 Tiburon, CA 94920

E-mail: dlatorre@sani5.org
 Phone: 415-286-1477 (cell fo

Model		Equipment	Project/Serial #	FOB	
Helical		Polychem-Brentwood		Fact. PPA	
Line	Qty	Description	Unit Price	Total	
		Head Shaft(s) Driven Sprocket Collector Sprockets for Head Shaft Anchors Idler Sprockets Idler Stub Shafts Wall Brackets For Return Track Support Return Track Wear Strip Drive Chain Tensioner Limit Switch(es) and Support(s) Drive Sprocket Assembly / Torque Overload Protection Device Drive Unit Motor and Reducer Base Plate for Drive Unit Chain Guard Adhesive for Anchors Adhesive Dispenser GENERAL EXCLUSIONS*: 1. Contractor/customer shall be responsible for field verification of all dimensions. 2. Foundations, supports for Polychem equipment (diaphragm plates) or special mounting plates.			
Quote Prepared By: Jeff Rabas			Total:		

PRICES QUOTED HEREIN ARE VALID FOR 30 DAYS.

PAYMENT TERMS: Net 30

If prices quoted do not include sales or use tax, such taxes, if required, are to be paid by the Purchaser.

DCF TERMS & CONDITIONS apply on all orders (copy available upon request).

Contact Jeff Rabas @ 303-710-9426 / jeff@chcwater.com
for Service Quotes, Maintenance Agreements or Questions about your equipment

Contact Info:

debby@chcwater.com or (720) 943-2995
 casey@chcwater.com or (760) 525-6139

Main #: (800) 964-9733
Fax #: (303) 477-1981

DC Frost Associates, Inc
 subsidiary of Coombs Hopkins Company
 8706 South 700 East, Suite 201
 Sandy, UT 84070

Quotation

Date	Quote #
7/20/2022	105502

Bill To

Marin County Sanitation District #5
 Attn: Accounts Payable
 P.O. Box 227
 Tiburon, CA 94920

Ship To

Marin County Sanitation District #5
 Attn: Dan LaTorre (415-286-1477)
 2001 Paradise Drive
 Tiburon, CA 94920

E-mail: dlatorre@sani5.org
 Phone: 415-286-1477 (cell fo

Model		Equipment	Project/Serial #	FOB	
Helical		Polychem-Brentwood		Fact. PPA	
Line	Qty	Description		Unit Price	Total
		3. Bid, performance, supply, or maintenance bonds. 4. Installation of equipment and anchor systems, concrete, sealing compounds, shim stock or grout. 5. Grouting behind idler stub shafts, head shaft spindles, & return track wall brackets is not included, but is required for these systems. 6. Tools or spare parts (unless listed elsewhere in this Proposal). 7. All reducer oil, bearing grease, or other lubricants. 8. Field paint, touch-up, finish painting, or finish coatings. 9. Unloading, hauling, erection, and storage of equipment. 10. Grease line piping (unless listed elsewhere in this Proposal) or grease guns. 11. Any electrical components or controls not shown in items included section of this Proposal. 12. All control panels (unless listed elsewhere within this Proposal), unistrut supports / mounting for control panels, electrical conduit, wires, or wiring, wire fittings, or boxes. 1. Wall Sleeves for scum troughs, weirs, baffles, overflow weirs, effluent troughs. 2. Anchor pull out testing. 3. PI&D drawings			
Quote Prepared By: Jeff Rabas				Total:	

PRICES QUOTED HEREIN ARE VALID FOR 30 DAYS.

PAYMENT TERMS: Net 30

If prices quoted do not include sales or use tax, such taxes, if required, are to be paid by the Purchaser.

DCF TERMS & CONDITIONS apply on all orders (copy available upon request).

Contact Jeff Rabas @ 303-710-9426 / jeff@chcwater.com
for Service Quotes, Maintenance Agreements or Questions about your equipment

Contact Info:

debby@chcwater.com or (720) 943-2995
 casey@chcwater.com or (760) 525-6139

Main #: (800) 964-9733
Fax #: (303) 477-1981

DC Frost Associates, Inc
 subsidiary of Coombs Hopkins Company
 8706 South 700 East, Suite 201
 Sandy, UT 84070

Quotation

Date	Quote #
7/20/2022	105502

Bill To

Marin County Sanitation District #5
 Attn: Accounts Payable
 P.O. Box 227
 Tiburon, CA 94920

Ship To

Marin County Sanitation District #5
 Attn: Dan LaTorre (415-286-1477)
 2001 Paradise Drive
 Tiburon, CA 94920

E-mail: dlatorre@sani5.org
 Phone: 415-286-1477 (cell fo

Model		Equipment	Project/Serial #	FOB	
Helical		Polychem-Brentwood		Fact. PPA	
Line	Qty	Description		Unit Price	Total
b	1	4. Conduit sizing or drawings. 5. Detailed specific storage plans or maintenance schedules for installed equipment outside Brentwood's 6. standard maintenance and preventative maintenance information. 7. Factory assembly of components. 8. Any component shown or described on a drawing and not included in the Items Included section of this Proposal, or any component or service not shown in this Proposal. *unless above items are listed as included elsewhere in this Proposal, they are excluded. ESTIMATED FREIGHT ONLY - ACTUAL FREIGHT CHARGES will apply and be added to all invoices. Manufacturer will not be able to provide exact shipment dates and arrivals.		1,700.00	1,700.00
		Sales Tax		5,209.60	5,209.60
Quote Prepared By: Jeff Rabas				Total:	

PRICES QUOTED HEREIN ARE VALID FOR 30 DAYS.

PAYMENT TERMS: Net 30

If prices quoted do not include sales or use tax, such taxes, if required, are to be paid by the Purchaser.

DCF TERMS & CONDITIONS apply on all orders (copy available upon request).

Contact Jeff Rabas @ 303-710-9426 / jeff@chcwater.com
 for Service Quotes, Maintenance Agreements or Questions about your equipment

Contact Info:

debby@chcwater.com or (720) 943-2995
 casey@chcwater.com or (760) 525-6139

Main #: (800) 964-9733
Fax #: (303) 477-1981

DC Frost Associates, Inc
 subsidiary of Coombs Hopkins Company
 8706 South 700 East, Suite 201
 Sandy, UT 84070

Quotation

Date	Quote #
7/20/2022	105502

Bill To

Marin County Sanitation District #5
 Attn: Accounts Payable
 P.O. Box 227
 Tiburon, CA 94920

Ship To

Marin County Sanitation District #5
 Attn: Dan LaTorre (415-286-1477)
 2001 Paradise Drive
 Tiburon, CA 94920

E-mail: dlatorre@sani5.org
 Phone: 415-286-1477 (cell fo

Model	Equipment	Project/Serial #	FOB	
Helical	Polychem-Brentwood		Fact. PPA	
Line	Qty	Description	Unit Price	Total
		NO VERBAL ORDERS ACCEPTED: DCF requires this quotation be signed/dated & returned, via e-mail or fax, along with a copy of Customer PO. By doing this, Customer is authorizing acceptance of the DCF quote and giving approval to place the order. PLEASE ADVISE OF ANY SHIPPING ADDRESS CHANGES, including Contact Name and Cell # as what is on the quote is where the order will ship. SIGNATURE / DATE / PO # _____	0.00	0.00
		DAMAGES/SHORTAGES: All parts arriving at the site must be inspected within (5) business days after receipt with Buyer reporting any damages/shortages. Damaged parts must be reported to DC Frost Associates, Inc. in writing, identifying parts damaged, quantity and must include pictures of the damage.	0.00	0.00
				0.00
Quote Prepared By: Jeff Rabas			Total:	\$72,029.60

PRICES QUOTED HEREIN ARE VALID FOR 30 DAYS.

PAYMENT TERMS: Net 30

If prices quoted do not include sales or use tax, such taxes, if required, are to be paid by the Purchaser.

DCF TERMS & CONDITIONS apply on all orders (copy available upon request).

Contact Jeff Rabas @ 303-710-9426 / jeff@chcwater.com
for Service Quotes, Maintenance Agreements or Questions about your equipment

Contact Info:

debby@chcwater.com or (720) 943-2995
 casey@chcwater.com or (760) 525-6139

Main #: (800) 964-9733
Fax #: (303) 477-1981

Agenda – Notes of Explanation
Sanitary District No. 5 Regular Board Meeting
August 18, 2022

Review and discuss lowest proposal from Sewer Tek Inc regarding concrete floor emergency repairs that must be performed prior to the wet weather season. Accept proposal and authorize District Manager to schedule emergency repairs

STAFF REPORT:

The Districts wet weather tank (primary sedimentation tank) is in need of emergency concrete repairs do to spalling that has caused the sludge collectors to bind and become non-operational. A 15' section of concrete 4" thick will need to be sawcut and removed and replaced with new in order to restore the operation of the sludge collectors. There does not appear to be any additional binding through out the tank, so the repairs appear to be minimal at this point.

FISCAL IMPACT:

\$24,000 for emergency wet weather sedimentation tank repairs

This item is not budgeted and will have to come from Capital Reserves.

CEQA (California Environmental Quality Act)

Exempt

Recommendation:

Approve the use of \$24,000 (unbudgeted) from Main Plant Capital Reserves for the emergency concrete repairs to the Wet Weather Primary Sedimentation Tank.



Tony Rubio, District Manager

ATTACHMENT:

Sewer Tek Proposal

Sewer Tech Inc. - Lic# A994135
 45 Atherton Ave
 Pittsburg, CA 94565 US
 +1 4154971127
 sewertechinc@gmail.com

Estimate 2020-
 1078



ADDRESS chief plant o Tony Rubio Sanitary 5	DATE	TOTAL
	08/10/2022	\$24,000.00

DATE	ACTIVITY	DESCRIPTION	QTY	RATE	AMOUNT
	wet tank floor renovation	wet tank floor retro fit /replace Remove a setion approximate 15 x15 section of the flooring concrete an replacement of the same to make it leveled	2	12,000.00	24,000.00

TOTAL \$24,000.00

THANK YOU.

Accepted By

Accepted Date

Agenda – Notes of Explanation

Sanitary District No. 5 Special Board Meeting

August 18, 2022

Declaration of Surplus Property- Ford Ranger

STAFF REPORT:

Below is a description of a surplus equipment which has recently surpassed its useful life. As part of the District's FY22-23 Capital Improvement Project List. The District Board of Directors must approve the old equipment as surplus for disposal purposes.

Equipment:

2003 Ford Ranger

I recommend the Board approve the old ford ranger as surplus and authorize the District Manager to dispose of the ranger through a publicly posted open bid process. The vehicle will be bid as-is.

The ford ranger will be removed from the District's Asset Inventory List once bids are opened and title is transferred to winning bidder.

FISCAL IMPACT:

None

CEQA (California Environmental Quality Act)

Exempt

Recommendation:

Approve the recommendation to declare the old ford ranger as surplus and authorize the District Manager to proceed with disposal.



Tony Rubio, District Manager

Agenda – Notes of Explanation

Sanitary District No. 5 Special Board Meeting

August 18, 2022

Provide General Manager Authorization to procure two ford mavericks as they become available not to exceed \$55,000 for both combined

STAFF REPORT:

The District is declaring the 2003 Ford Ranger as surplus property, the vehicle has surpassed its useful life. The Districts FY 2022-2023 budget has a \$75K budget for vehicle replacements.

Through consultation with staff, it is recommended that 2 ford mavericks be procured- Due to several factors:

1. Price- Can be purchased for less than \$30k per truck brand new when available
2. Staff productivity- more staff on board requires an additional vehicle for SSO response and sewer line maintenance activities, along with daily underground service alert response.
3. Fuel efficiency 33mpg high way and 42mpg city in the hybrid and 30mpg highway and 23mpg city for the standard gas eco boost.
4. Small size of pick up makes it ideal for belvedere island work and smaller streets in Tiburon.

FISCAL IMPACT:

\$75K Approved budget- Looking for approval up to \$30K per truck to be able to procure when available due to high demand and lack of current availability.

CEQA (California Environmental Quality Act)

Exempt

Recommendation:

Approve and authorize the District Manager to procure 2 trucks but with a not to exceed of \$30K per vehicle.



Tony Rubio, District Manager



Support Your Veterans

Get Involved

Widget Didn't Load
Check your internet and refresh this page.
If that doesn't work, contact us.
[Refresh this page](#)


There are many ways for you to get involved and make a difference! Here are a few ideas:

- Volunteer. Call your local VA medical center, and ask about volunteer opportunities, or sign up with us and volunteer at our events.
- Advocate for wounded service members.
- Help raise awareness. Even the simplest efforts can make a difference. Help spread the word about the needs of wounded service members and the work of Wine Country Marines in your community. If you know an injured service member who might benefit from our services, urge them to get involved – it's free!
- Consider a financial gift. If you're in a position to do so, financial contributions are always greatly appreciated. Perhaps you might even host a fundraising event with your friends to benefit warriors!
- Honor service members. If you know a service member, thank them for their service and sacrifices. These small gestures mean so much!
- You can show your support for veterans by shopping with companies who support The Wine Country Marines.

See Our Events




Wine Country Marines donated funds to four Veterans who lost everything in the recent Northern California fires. Donations were equal to 6 months' expenses for each veteran.



Mail a Check

19484 Riverside Drive
Sonoma, Ca 95476

Please a note with your donor instructions: ie: wounded warrior assistance, fire relief, surviving family support, etc.




Online via PayPal

Make a tax deductible donation.

[Click to Give](#)

You may follow-up with an email to our Treasurer - Jaime Payne at Jaime@WineCountryMarines.org if you have specific directions for the use of your donation.



Over the Phone

It's easy to donate offline too.
Tel: 855-367-8762

707.981.7909
CA License # 981620
www.sollandscapes.net



Design • Installation • Irrigation • Maintenance

Sanitary District No. 5 of Marin County

Attn: Chad Bilsborough 2001 Paradise Drive Tiburon CA 94920

5/20/22

Re: Sani # 5 Landscape Renovation

#	Scope	Budget T&M
1-	Demo: Allowance to remove all plant material including 1 callistemon tree. Remove gravel dispose of all waste.	\$ 7,555.00
2-	Soil Amendments & Bark: Amend soil for planting area at a rate of 6 cubic yards / 1000 sq.ft. Install cardboard for sheet mulching. Top with black bark. To occur at top of wall planting area.	\$ 5,157.95
3-	Plant Materials: Allowance to provide up 60- 5 gal, 11- 1 gal, Succulents 15 total to be planted at entry planter. 6-24" boxed trees Citrus or type tbd. to All plants to receive slow release fertilizer at time of planting.	\$ 8,914.70
4-	Synthetic turf : Provide and install synthetic turf at tree median at end of wall and patch at Calistemon tree removal spot *note syn turf will be matched as closely as possible.	\$ 5,333.68
5-	Irrigation: Allowance to provide 1 valve for new plants. Battery operated controller or wall mount tbd.	\$ 3,500.00
6-	General Conditions: Staking, Layout, Management, Admin and Legal Fees. Temp. facilities. Equipment costs.	\$ 4,000.00
	Total Budget For Landscape	\$ 34,461.33

Exclusions:

Any items not noted, Large Rock excavation

Damage to underground utilities, Permits/ fees/ bonds

All areas are to be to grade- defer to misc. grading allowance

Plant materials are dependent upon availability

Notes:

1- All pricing above is budgetary and is subject to change based upon rising costs of materials combined with selected or deleted scope.

2- Manager visit and site meeting will be required to review proposal, plan and exact scope prior to contract signing.

3- Manager's review and approvals will be needed throughout the project to ensure the final product delivered is aligned and to keep schedule.

Thank you for the opportunity to bid on your project. Please let me know if this price does not fit into your budget, we can value engineer and come up with cost saving ideas

We are looking forward to hearing from you.

Sincerely,

Lena Furlong - President Sol Landscapes, Inc.

707.981.7909
CA License # 981620
www.sollandscapes.net



Design • Installation • Irrigation • Maintenance

CISTUS X PURPUREUS (PNK/R)



TRACHELOSPERMUM JASMIN STK



DODONAEA VISCOSA PURPUREA



Design • Installation • Irrigation • Maintenance

SALVIA CLEVELANDII



CLEMATIS ARMANDII (WHT)



ECHEVERIA AFTERGLOW



HAWORTHIA BIG BAND

