

**NOTICE AND AGENDA
Regular Board Meeting
at Sanitary District No. 5 of Marin County
Thursday, July 21, 2022**

5:00 P.M. REGULAR BOARD MEETING

COVID-19 ADVISORY NOTICE

Consistent with Assembly Bill 361 revising Government Code section 54953, and Resolution No. 2021-07 of this Board enacted in accordance therewith, the Meeting will not be physically open to the public and all Board Members and Staff will be teleconferencing into the meeting.

How to Submit Public Comments:

Comments submitted prior to the commencement of the meeting will be presented to the Board and included in the public record for the meeting.

Public Comments are to be submitted via email to rdohrmann@sani5.org.

In addition, members of the public who are calling in, will have the opportunity to provide public comments by following the steps below:

How to Participate in the Meeting:

Join Zoom Meeting by clicking on the following link:

<https://us02web.zoom.us/j/6230620778>

Meeting ID: 623 062 0778 or join by phone:

Call in number: (669) 900-9128 Participant Code: 623 062 0778

ROLL CALL

PUBLIC COMMENTS: The public is invited to address the Board on items that do not appear on the agenda and are within the subject matter jurisdiction of the Board. The Brown Act does not allow the Board to take action on any public comment. Please limit public comments to no more than three minutes.

DIRECTORS' COMMENTS AND/OR AGENDA REQUESTS:

CONSENT CALENDAR:

1. Motion to review and affirm Resolution No. 2021-08: A Resolution proclaiming the continuing need to meet by teleconference in accordance with Government Code Section 54953 – Action
2. Approval of June 16, 2022, Regular Board Meeting Minutes and June 30, 2022, Special Board Meeting minutes (Dohrmann/Mulloy)
3. Review and receive all electronic fund transfers (EFTs) and approve warrants from June 10th, 2022, through July 14th, 2022 (JP Morgan Chase Bank, check no. 8986 through check no. 9060, all transactions totaling \$420,699.05) and receive June 2022, payroll, in the sum of \$121,806.43 (Dohrmann)
4. Receipt of Financial Reports for June 2022 (Dohrmann)

MANAGEMENT REPORTS:

5. District Management Summary Report (Rubio)

NEW BUSINESS:

6. Consideration to approve Resolution 2022-08, a Resolution rejecting all submitted bids for the 2022 Sewer Rehabilitation Project; and that District staff is authorized to re-advertise the Project for bid utilizing the revised specifications prepared by the District Engineer (Rubio) – Action
7. Approval of Resolution 2022-09, a resolution honoring Timothy James O’Day (Rubio) – Action

UNFINISHED BUSINESS:

COMMITTEE REPORTS:

8. Capital Improvement Program Committee (Arias-Montez/Moody)
9. Finance & Fiscal Oversight Committee (Benediktsson/Arias-Montez)
10. Governance Committee (Moody/Snyder)
11. Personnel Committee (Snyder/Carapiet)

OTHER BUSINESS:

ENVIRONMENTAL:

CORRESPONDENCE:

INFORMATIONAL ITEMS:

ADJOURNMENT

The Board will be asked to adjourn the meeting to a Regular Board Meeting on August 18, 2022, at 5:00 P.M.

RESOLUTION 2021-08

SANITARY DISTRICT NO. 5 OF MARIN COUNTY

A RESOLUTION PROCLAIMING THE CONTINUING NEED TO MEET BY TELECONFERENCE IN ACCORDANCE WITH GOVERNMENT CODE SECTION 54953

WHEREAS, on January 30, 2020, the World Health Organization declared the COVID-19 outbreak a public health emergency of international concern; and

WHEREAS, on March 4, 2020, the Governor of the State of California declared a state of emergency in order to address the COVID-19 pandemic; and

WHEREAS, on March 3, 2020, Marin County declared a local emergency due to the COVID-19; and

WHEREAS, to allow local government bodies to safely conduct public meetings during the COVID-19 pandemic as well as to ensure public access to governmental meetings, the Governor of the State of California issued Executive Orders N-25-20 and N-29-20, which streamlined notice requirements for teleconference meetings under the Ralph M. Brown Act; and

WHEREAS, the Sanitary District No. 5 (“District”) has been conducting meetings of the District Board as well as its Committees pursuant to the provisions of these executive orders since their issuance; and

WHEREAS, the California State Legislature approved and the Governor signed AB 361 into law, which amended the Ralph M. Brown Act to allow local legislative bodies to continue meeting by teleconference during a gubernatorial proclaimed state of emergency if the local legislative body determines, by majority vote, that as a result of the emergency, meeting in person would present imminent risks to the health or safety of attendees (California Government Code section 54953(e)(1)(B)); and

WHEREAS, the State of Emergency remains in effect; and

WHEREAS, COVID-19 continues to threaten the health and lives of District residents; and

WHEREAS, there is scientific consensus that variants of COVID-19, such as the Delta variant, are highly transmissible in indoor settings; and

WHEREAS, in individuals that are vaccinated, breakthrough cases of COVID-19 are becoming increasingly common; and

WHEREAS, AB 361 requires the District to reconsider the circumstances of the emergency and review whether it continues to directly impact the ability of the members to meet safely in person;

NOW, THEREFORE, BE IT RESOLVED that the Board of Directors of the Sanitary District No. 5 does hereby resolve, declare, determine, and order as follows:

SECTION 1. The above recitals are correct and are material to this Resolution and are incorporated into this Resolution as findings of the District Board.

SECTION 2. Pursuant to the requirements of Government Code Section 54953 (e)(3), the District Board makes the following findings:

- A) The District Board has considered the circumstances of the continuing state of emergency;
- B) The state of emergency continues to directly impact the ability of the members and the public to meet safely in person;
- C) Due to COVID-19, holding meetings in person will present imminent risks to the health and safety to attendees; and
- D) The District Board will continue to meet by teleconference in accordance with Government Code section 54953(e).

SECTION 3. The aforementioned findings apply to all Commissions, Committees, or advisory bodies of the District, which are classified as legislative bodies per Government Code Section 54952.

SECTION 4. The District Board will reconsider, not more than every 30 days, the circumstances of the emergency and review whether it continues to directly impact the ability of the members to meet safely in person.

SECTION 5. All portions of this resolution are severable. If an individual component of this resolution is adjudged by a court to be invalid and unenforceable, then the remaining portions will continue in effect.

* * * * *

I hereby certify that the foregoing is a full, true, and correct copy of a resolution duly and regularly passed and adopted by the Board of Directors of Sanitary District No. 5 of Marin County, California, at a meeting thereof duly held on the 21st day of October 2021, by the following vote:

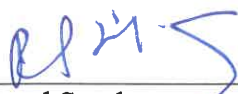
AYES, and in favor thereof, Directors: *RICHARD SNYDER, JOHN CARAPIET, TOM MOODY, CATHERINE BENEDIKTSSON*

NOES, Directors: *NONE*

ABSENT, Directors: *OMAR AQUAS MONTEZ*

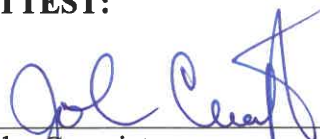
ABSTAIN, Directors: *NONE*

APPROVED:



Richard Snyder
President, Board of Directors

ATTEST:



John Carapiet
Vice President, Board of Directors

**Regular Board Meeting Minutes
Sanitary District No. 5 of Marin County
Thursday, June 16, 2022**

Item #2A

5:00 P.M. REGULAR BOARD MEETING

COVID-19 ADVISORY NOTICE

Consistent with Assembly Bill 361 revising Government Code section 54953, and Resolution No. 2021-07 of this Board enacted in accordance therewith, the Meeting will not be physically open to the public and all Board Members and Staff will be teleconferencing into the meeting.

How to Submit Public Comments:

Comments submitted prior to the commencement of the meeting will be presented to the Board and included in the public record for the meeting.

Public Comments are to be submitted via email to rdohrmann@sani5.org.

In addition, members of the public who are calling in, will have the opportunity to provide public comments by following the steps below:

How to Participate in the Meeting:

Join Zoom Meeting by clicking on the following link:

<https://us02web.zoom.us/j/6230620778>

Meeting ID: 623 062 0778 or join by phone:

Call in number: (669) 900-9128 Participant Code: 623 062 0778

CALL TO ORDER by President Carapiet at 5:03 p.m.

ROLL CALL

Directors present: John Carapiet, President
Catharine Benediktsson, Director
Richard Snyder, Director

Directors not present: Omar Arias-Montez, Vice President
Tod Moody, Secretary

Staff present: Tony Rubio, District Manager
Robin Dohrmann, Office Manager
Jayne Mulloy, Administrator

Consultants present: Benjamin Stock, District Counsel

PUBLIC COMMENTS: The public is invited to address the Board on items that do not appear on the agenda and are within the subject matter jurisdiction of the Board. The Brown Act does not allow the Board to take action on any public comment. Please limit public comments to no more than three minutes.

There were no public comments at this time.

DIRECTORS' COMMENTS AND/OR AGENDA REQUESTS:

There were no public comments or Directors' comments at this time.

CONSENT CALENDAR:

1. Motion to review and affirm Resolution No. 2021-08: A Resolution proclaiming the continuing need to meet by teleconference in accordance with Government Code Section 54953 – Action
2. Approval of May 19, 2022 Regular Board Meeting Minutes (Dohrmann)
3. Review and receive all electronic fund transfers (EFTs) and approve warrants from May 13th, 2022, through June 9th, 2022 (JP Morgan Chase Bank, check no. 8931 through check no. 8985, all transactions totaling \$195,858.90) and receive May 2022, payroll, in the sum of \$125,726.47 (Dohrmann)
4. Receipt of Financial Reports for May 2022 (Dohrmann)

Discussion by the Board. Motion (Snyder/Benediktsson) to approve the Consent Calendar, with the exception of one erroneous descriptor on check #8960. Passed (3-0-0-2).

MANAGEMENT REPORTS:

5. District Management Summary Report (Rubio)

District Manager, Tony Rubio, presented a written and verbal report on current District issues, responding to questions from the Board. Discussion by the Board.

NEW BUSINESS:

6. PUBLIC HEARING: Fiscal Year 2022-2023 Budget

a. Public Comment

- b. Consideration of adoption of Resolution No. 2022-03: A Resolution Approving and Adopting Fiscal Year 2022-2023 Final Budget and Fixing the District's Tax Allocation for Fiscal Year

Discussion by the Board. Motion (Snyder/Benediktsson) to adopt Resolution No. 2022-03: A Resolution Approving and Adopting Fiscal Year 2022-2023 Final Budget and Fixing the District's Tax Allocation for Fiscal Year. Passed (3-0-0-2).

7. Review and Approval of Resolution No. 2022-04: A Resolution of the Board of Directors of Sanitary District No. 5 of Marin County Adopting the Memorandum of Understanding with the Employees of Sanitary District No. 5 of Marin County Covering the Period from July 1, 2022 through June 30, 2026 (Rubio) – Action

Discussion by the Board. Motion (Snyder/Benediktsson) to adopt Resolution No. 2022-04: A Resolution of the Board of Directors of Sanitary District No. 5 of Marin County Adopting the Memorandum of Understanding with the Employees of Sanitary District No. 5 of Marin County Covering the Period from July 1, 2022 through June 30, 2026. Passed (3-0-0-2).

8. Review and Approval of Resolution No. 2022-05: A Resolution of the Board of Directors of Sanitary District No. 5 of Marin County Adopting the Employee Benefits Plan for Unrepresented Employees of Sanitary District No. 5 of Marin County, Effective July 1, 2022 (Rubio) – Action

Discussion by the Board. Motion (Benediktsson/Snyder) to adopt Resolution No. 2022-05: A Resolution of the Board of Directors of Sanitary District No. 5 of Marin County Adopting the Employee Benefits Plan for Unrepresented Employees of Sanitary District No. 5 of Marin County, Effective July 1, 2022. Passed (3-0-0-2).

9. Review and Approval of SD5 Organization Chart and Publicly Available Pay Scale for FY2022-2023 and Resolution No. 2022-06: A Resolution of the Board of Directors of Sanitary District No. 5 of Marin County Adopting the Annual Cost of Living Increase (5.0%) for All Sanitary District No. 5 of Marin County Employees - Represented, Unrepresented, both Effective July 1, 2022 (Rubio) – Action

(Cont'd from Item #9)

Discussion by the Board. Motion (Snyder/Carapiet) to review and approve the SD5 Organization Chart and Publicly Available Pay Scale for FY2022-2023 and approval of Resolution No. 2022-06: A Resolution of the Board of Directors of Sanitary District No. 5 of Marin County Adopting the Annual Cost of Living Increase (5.0%) for All Sanitary District No. 5 of Marin County Employees - Represented, Unrepresented, both Effective July 1, 2022. Passed (3-0-0-2).

10. Review and discuss draft provisional will serve letter for the Mallard Point Project (Rubio) – Action

Discussion by the Board. Motion to approve the will-serve letter re Mallard Point Project in Belvedere, with additional verbiage including, “SD5, in no way, accepts the responsibility of the proposed underground laterals nor submerged laterals,” as well as requesting the maximum capacity regarding said laterals. Motion failed. (2-1-0-2)

11. Review, Discuss and Cast SD5 Vote for California Special District Association (CSDA) District Representative (Bay Area Network, Seat B) 2023-2025 – Action (Rubio)

Discussion by the Board. Motion (Snyder/Carapiet) to approve and cast a vote for California Special District Association (CSDA) District Representative (Bay Area Network, Seat B), 2023-2025.

UNFINISHED BUSINESS: None

COMMITTEE REPORTS:

- 12. Capital Improvement Program Committee (Arias-Montez/Moody) - None
- 13. Finance & Fiscal Oversight Committee (Benediktsson/Arias-Montez) - None
- 14. Governance Committee (Moody/Snyder) - None
- 15. Personnel Committee (Snyder/Carapiet) - None

OTHER BUSINESS: None

ENVIRONMENTAL: None

CORRESPONDENCE: None

INFORMATIONAL ITEMS: None

ADJOURNMENT

The Board adjourned at 5:31 p.m. to a Special Board Meeting on June 30, 2022, at 12:00 p.m.

Approved:

Attest:

John Carapiet
President, Board of Directors

Richard Snyder
Director, Board of Directors

**Special Board Meeting Minutes
Sanitary District No. 5 of Marin County
Thursday, June 30, 2022**

12:00 P.M. SPECIAL BOARD MEETING

COVID-19 ADVISORY NOTICE

Consistent with Assembly Bill 361 revising Government Code section 54953, and Resolution No. 2021-07 of this Board enacted in accordance therewith, the Meeting will not be physically open to the public and all Board Members and Staff will be teleconferencing into the meeting.

How to Submit Public Comments:

Comments submitted prior to the commencement of the meeting will be presented to the Board and included in the public record for the meeting.

Public Comments are to be submitted via email to rdohrmann@sani5.org.

In addition, members of the public who are calling in, will have the opportunity to provide public comments by following the steps below:

How to Participate in the Meeting:

Join Zoom Meeting by clicking on the following link:

<https://us02web.zoom.us/j/6230620778>

Meeting ID: 623 062 0778 or join by phone:

Call in number: (669) 900-9128 Participant Code: 623 062 0778

CALL TO ORDER by President Carapiet at 4:00 p.m.

ROLL CALL

Directors present:

John Carapiet, President
Omar Arias-Montez, Vice President
Catharine Benediktsson, Director
Richard Snyder, Director
Tod Moody, Secretary (12:03 p.m.)

Staff present:

Tony Rubio, District Manager
Robin Dohrmann, Office Manager
Benjamin Stock, Burke, Williams, & Sorensen, LLC

PUBLIC COMMENTS: The public is invited to address the Board on items that do not appear on the agenda and are within the subject matter jurisdiction of the Board. The Brown Act does not allow the Board to take action on any public comment. Please limit public comments to no more than three minutes.

There were no public comments at this time.

DIRECTORS' COMMENTS AND/OR AGENDA REQUESTS:

There were no Directors' comments nor agenda requests at this time.

NEW BUSINESS:

1. Motion to review and affirm Resolution No. 2021-08: A Resolution proclaiming the continuing need to meet by teleconference in accordance with Government Code Section 54953 – Action

Discussion by the Board. Motion (Snyder/Benediktsson) to review and affirm Resolution No. 2021-08: A Resolution proclaiming the continuing need to meet by teleconference in accordance with Government Code Section 54953. Passed (4-0-0-1).

2. Consideration of adoption of Resolution No 2022-07: A Resolution of the Governing Body of Sanitary District No.5 of Marin County, proposing a regularly scheduled election to be held in this jurisdiction; requesting the Board of Supervisors to consolidate with any other election conducted on said date, and requesting election services by the Marin County Elections Department (Rubio) – Action

Discussion by the Board. Motion (Snyder/Arias-Montez) to adopt Resolution No 2022-07: A Resolution of the Governing Body of Sanitary District No.5 of Marin County, proposing a regularly scheduled election to be held in this jurisdiction; requesting the Board of Supervisors to consolidate with any other election conducted on said date, and requesting election services by the Marin County Elections Department. Passed (4-0-0-1).

ADJOURNMENT

The Board adjourned at 12:05 p.m. to a Regular Board Meeting on July 21, 2022, at 5:00 p.m.

Approved:

Attest:

John Carapiet
President, Board of Directors

Omar Arias-Montez
Secretary, Board of Directors

Sanitary Distr. No.5 of Marin Co.

Warrant List Summary

June 10 through July 14, 2022

07/21/22

Date	Num	Name	Memo	Amount
JP Morgan Chase - Primary 7399				
06/15/22	EFT	CalPERS	EFT Health Premium, Cust #4163206459 - July 2022 (AJE FY22-23)	-15,859.26
07/14/22	EFT	PERS	CalPERS Unfunded Accrued Liability (UAL) Lump Sum Payment for SD5 FY19-20 -...	-764.00
07/14/22	EFT	PERS	CalPERS Unfunded Accrued Liability (UAL) Lump Sum Payment for SD5 FY19-20 -...	-27.92
06/16/22	8986	AT&T	Acct #960732-76375559 - May 2022	-840.41
06/16/22	8987	Environmental Systems Research Institute	Cust #356200, ArcGIS Maintenance, June 2022 (AJE FY22-23)	-700.00
06/16/22	8988	Pacific Gas & Electric	Acct #2908031411-4, Utilities, May 2022	-19,742.61
06/16/22	8989	Special District Risk Management Authorit	Member #7665, Life, Vision, DDS & LTD Ins., July 2022 (AJE FY22-23)	-1,533.42
06/16/22	8990	Staples, Inc.	Acct #60111000714, Office Supplies, May 2022	-102.28
06/16/22	8991	Tiburon Mail Services	Cust ID#: 37/Account1, Postage - May 2022	-32.09
06/16/22	8992	Rubio, Antonio	Reimb. for Travel (WEF), Meals/diem & Transp - May 2022	-649.20
06/16/22	8993	Sewer Tek	Acct #400M14, M.P. P&L Relocating - June 2022	-50,000.00
06/16/22	8994	Verizon Wireless	Acct #0342125502-00001: iPhones & BPS Comm, June 2022	-408.71
06/15/22	8995	Balf, Abigail	EE Incentive Program, CWEA Cert re Collxns (G1) - June 2022	-1,000.00
07/14/22	9001	Alameda Electrical Distributors, Inc.	Acct #56156: M.P. & P.C. Plants - June 2022 (FY21-22 AJE)	-2,578.67
07/14/22	9002	Alhambra	Acct #547945611762129, Water - June (AJE FY21-22)	-211.27
07/14/22	9003	Alliant Insurance Services	Acct #SANIDIS-03, Auto Ins. Policy Renewal FY22-23, July 2022	-4,298.00
07/14/22	9004	Aquatic Informatics, Inc.	HACH WIMS Support - July 2022	-2,168.00
07/14/22	9005	AT&T	Acct #960732-76375559 - June 2022 (AJE FY21-22)	-840.41
07/14/22	9006	Caltronics Business Systems, Inc.	Acct #SD15, Multi-purpose Copier Contract, June 2022 (AJE FY21-22)	-139.21
07/14/22	9008	Bilsborough, Chad	EE Incentive, June 2022 (AJE FY21-22)	-5,000.00
07/14/22	9009	Bilsborough, Chad	EE Incentive, June 2022 (AJE FY21-22)	-734.22
07/14/22	9010	Omar Arias-Montez	Attendance at SD5 Board Mtgs, Jan - Jun 2022 (AJE FY21-22)	-600.00
07/14/22	9011	Catharine Benediktsson	Attendance at SD5 Board Mtgs, Jan - Jun 2022 (AJE FY21-22)	-800.00
07/14/22	9012	Tod Moody	Attendance at SD5 Board Mtgs, Jan - Jun 2022 (AJE FY21-22)	-600.00
07/14/22	9013	Cintas Corporation #626	Acct #626-00821, PPE/Safetywear + Service, June 2022 (AJE FY21-22)	-140.33
07/14/22	9014	Comcast Business	Acct# 8155 30 011 0149465, Bus. Voice, Internet & Cable, June 2022 (AJE FY21-22)	-579.24
07/14/22	9015	CSRMA California Sanitation Risk Mgmt. Au	Phys. Property + W.C., FY2022-2023	-67,947.13
07/14/22	9016	DKF Solutions Group, LLC	My Safety Officer Monthly Subscription + OSHA Consult - June (AJE FY21-22) - Jul...	-2,813.75
07/14/22	9017	D&K Auto Service	SD5 Vehicle Maint., June 2022 (AJE FY21-22)	-147.04
07/14/22	9018	Fastenal Company	CASA10962, M.P. Parts & Service, June 2022 (AJE FY21-22)	-2,196.59
07/14/22	9019	Friedman's Home Improvement	Acct #20070, PPE/Safetywear, June 2022 (AJE FY21-22)	-23.25
07/14/22	9020	Goodman Building Supply Co.	Acct #20070, M.P. & P.C. Supplies + P&L, June 2022 (AJE FY21-22)	-245.40
07/14/22	9021	Grainger	Acct #810128785, Lab Supplies, June 2022 (AJE FY21-22)	-410.00
07/14/22	9022	Frank Olsen Co., LLC	M.P. Digester Rehab Program - June 2021 (AJE FY20-21)	-69,402.61
07/14/22	9023	Harrington Industrial Plastics LLC	Cust #:044227, M.P. Supplies - June (AJE FY21-22) + July 2022	-1,042.66
07/14/22	9024	HireRight, LLC	Acct #:272761, Background Check for J Mulloy (D.O.H.: 6.05.2022)	-87.78
07/14/22	9025	Linscott Engineering Contractors Inc.	SD5 P.C. P&L - September 2021 (AJE FY21-22)	-3,427.37
07/14/22	9026	Lystek Int'l, LTD	Biosolids Transport - June 2022 (AJE FY21-22)	-782.34
07/14/22	9027	McCampbell Analytical, Inc.	P.C. Monitoring, Acute & Aquatic Toxicity Testing - June 2022 (AJE FY21-22)	-2,225.00
07/14/22	9028	Marin Water	Water, May 2021 - June 2022 (AJE FY21-22)	-1,601.11
07/14/22	9029	Martin Bros. Supply	Tib. P&L - June 2022 (AJE FY21-22)	-87.84
07/14/22	9030	Medical Center of Marin, ES A/R	Acct #:SDN5_B1, J. Mulloy/I Salazar - May 2022 (AJE FY21-22)	-484.00
07/14/22	9031	Mill Valley Refuse Service, Inc.	Acct #063092, SLUDGE TRANSPORT - June 2022 (FY21-22)	-2,160.00
07/14/22	9032	Mill Valley Refuse Service, Inc.	Acct #032945, Garbage Service + 1 yd rental, June 2022 (AJE FY21-22)	-263.12
07/14/22	9033	Office Depot	Acct #6011 5642 0308 4271, Off. + Janitorial Supplies, May 2022 (AJE FY21-22)	-1,143.02
07/14/22	9034	Pacific Gas & Electric	Acct #2908031411-4, Utilities - June 2022 (AJE FY21-22)	-21,398.33
07/14/22	9035	Robert L Talavera, LLC	SSGIS ArcView Support, June 2022 (AJE FY21-22)	-861.55
07/14/22	9036	Roy's Sewer Service, Inc.	P&L: M.P., Tiburon & Belvedere - June 2022 (AJE FY21-22)	-2,915.00
07/14/22	9037	SASM	Bioassay Testing, Apr - Jun, 2022 (AJE FY21-22)	-1,200.00
07/14/22	9038	Special District Risk Management Authorit	Member #7665, Life, Vision, DDS & LTD Ins. - August 2022	-1,533.42
07/14/22	9039	Staples, Inc.	Acct #60111000714, Office Supplies - June 2022 (AJE FY21-22)	-147.91
07/14/22	9040	The Ark Publishing Co. Inc.	Public Notice Listing - May 2022 (AJE FY21-22)	-260.00
07/14/22	9041	Town of Tiburon	Fuel - April + May 2022 (AJE FY21-22)	-3,479.03
07/14/22	9042	Water Components & Building Supply	Acct #454, M.P. Supplies - May 2022 (AJE FY21-22)	-1,192.08
07/14/22	9043	Waste Management of Redwood Landfill	Acct #507-0000190-1507-2, Sludge Disposal - June 2022 (AJE FY21-22)	-1,650.22
07/14/22	9044	WorkSmart Automation, Inc.	SD5 Comm System Maintenance - May 2022 (AJE FY21-22)	-620.00
07/14/22	9045	Balf, Abigail	EE Incentive Program - June 2022 (AJE FY21-22)	-1,000.00
07/14/22	9046	Rosser, John	S/B Reimb - June 2022 (AJE FY21-22)	-51.23
07/14/22	9047	US Bank	Acct#:4246 0445 5565 3611, May - June 2022 (AJE FY21-22)	-10,548.93
07/14/22	9048	Univar	Cust ID #STDT001, Chemicals - June 2022 (AJE FY21-22)	-6,912.49
07/14/22	9050	Banshee Networks, Inc.	Computer/IT Support, E-Media Installations - June 2022 (AJE FY21-22)	-11,460.88
07/14/22	9051	Bay Alarm	Acct #274428, July - September 2022	-258.00
07/14/22	9052	Bay City Boiler	Acct #274428, M.P. Boiler - March & June 2022 (AJE FY21-22)	-36,753.89
07/14/22	9053	Verizon Wireless	Acct #0342125502-00001: iPhones & BPS Comm, July 2022	-409.58
07/14/22	9054	Brelje and Race Laboratories, Inc.	M.P./P.C. Plant Samples, April - June 2022 (AJE FY21-22)	-2,983.00
07/14/22	9055	Burke, Williams & Sorensen, LLP	Legal Advice, April & May, 2022 (AJE FY21-22)	-16,803.00
07/14/22	9056	Caltest Analytical Laboratory	M.P./P.C. Lab Sampling - June 2022 (AJE FY21-22)	-2,261.80
07/14/22	9057	John Carapiet	Attendance at SD5 Board Mtgs, Jan - Jun 2022 (AJE FY21-22)	-900.00
07/14/22	9058	Richard Snyder	Attendance at SD5 Board Mtgs, Jan - Jun 2022 (AJE FY21-22)	-900.00
07/14/22	9059	Access Answering Service	Acct #4080C, Answering Service, July 2022	-66.00
07/14/22	9060	Nute Engineering Corp.	Consulting & Engr. Svcs., June (AJE FY21-22) & July 2022	-27,293.45
Total JP Morgan Chase - Primary 7399				-420,699.05
TOTAL				-420,699.05

07/21/22

Sanitary Distr. No.5 of Marin Co.
Warrant List Detail
 June 10 through July 14, 2022

Date	Num	Name	Memo	Account	Class	Paid Amount
06/15/22	EFT	CalPERS	EFT Health Premium, Cust #4163206459 - July 2022 (AJE FY22-23)	JP Morgan Chase - Primary...		
			Active Employee Health Premium - July 2022 (AJE FY22-23)	8020.05 · Employee Health	Belvedere	-5,362.66
			Active Employee Health Premium - July 2022 (AJE FY22-23)	8020.05 · Employee Health	Tiburon:Paradise...	-435.46
			Active Employee Health Premium - July 2022 (AJE FY22-23)	8020.05 · Employee Health	Tiburon	-9,114.74
			Retiree Health Premium - July 2022 (AJE FY22-23)	8022.05 · Reitree Health	Belvedere	-321.48
			Retiree Health Premium - July 2022 (AJE FY22-23)	8022.05 · Reitree Health	Tiburon:Paradise...	-26.10
			Retiree Health Premium - July 2022 (AJE FY22-23)	8022.05 · Reitree Health	Tiburon	-546.42
			Active Employee Health Premium - July 2022 (AJE FY22-23) - Admin Fee	8020.05 · Employee Health	Belvedere	-13.41
			Active Employee Health Premium - July 2022 (AJE FY22-23) - Admin Fee	8020.05 · Employee Health	Tiburon:Paradise...	-1.09
			Active Employee Health Premium - July 2022 (AJE FY22-23) - Admin Fee	8020.05 · Employee Health	Tiburon	-22.78
			Retiree Health Premium - July 2022 (AJE FY22-23) - Admin Fee	8022.05 · Reitree Health	Belvedere	-5.44
			Retiree Health Premium - July 2022 (AJE FY22-23) - Admin Fee	8022.05 · Reitree Health	Tiburon:Paradise...	-0.44
			Retiree Health Premium - July 2022 (AJE FY22-23) - Admin Fee	8022.05 · Reitree Health	Tiburon	-9.24
TOTAL						-15,859.26
07/14/22	EFT	PERS	CalPERS Unfunded Accrued Liability (UAL) Lump Sum Payment for S...	JP Morgan Chase - Primary...		
			CalPERS Unfunded Accrued Liability (UAL) Lump Sum Payment for SD5 F...	8019.08 · PERS Retirement - ...	Belvedere	-283.06
			CalPERS Unfunded Accrued Liability (UAL) Lump Sum Payment for SD5 F...	8019.08 · PERS Retirement - ...	Tiburon	-480.94
TOTAL						-764.00
07/14/22	EFT	PERS	CalPERS Unfunded Accrued Liability (UAL) Lump Sum Payment for S...	JP Morgan Chase - Primary...		
			CalPERS Unfunded Accrued Liability (UAL) Lump Sum Payment for SD5 F...	8019.08 · PERS Retirement - ...	Belvedere	-10.34
			CalPERS Unfunded Accrued Liability (UAL) Lump Sum Payment for SD5 F...	8019.08 · PERS Retirement - ...	Tiburon	-17.58
TOTAL						-27.92
06/16/22	8986	AT&T	Acct #960732-76375559 - May 2022	JP Morgan Chase - Primary...		
			PC Plant Telephones - May 2022	8532 · Paradise Cove Teleph...	Tiburon:Paradise...	-518.14
			PC Pumps & Lines Telephones - May 2022	8533 · Pumps & Lines Telep...	Tiburon:Paradise...	-8.27
			Tib Pumps & Lines Telephones - May 2022	8533 · Pumps & Lines Telep...	Tiburon	-314.00
TOTAL						-840.41
06/16/22	8987	Environmental Systems R...	Cust #356200, ArcGIS Maintenance, June 2022 (AJE FY22-23)	JP Morgan Chase - Primary...		
			Q#: 26074183, ArcGIS for Desktop Basic Single User Primary & Secondar...	8510 · Data/Alarms/IT Supp ...	Belvedere	-251.72
			Q#: 26074183, ArcGIS for Desktop Basic Single User Primary & Secondar...	8510 · Data/Alarms/IT Supp ...	Tiburon:Paradise...	-20.44
			Q#: 26074183, ArcGIS for Desktop Basic Single User Primary & Secondar...	8510 · Data/Alarms/IT Supp ...	Tiburon	-427.84
TOTAL						-700.00

07/21/22

Sanitary Distr. No.5 of Marin Co.
Warrant List Detail
 June 10 through July 14, 2022

Date	Num	Name	Memo	Account	Class	Paid Amount
06/16/22	8988	Pacific Gas & Electric	Acct #2908031411-4, Utilities, May 2022	JP Morgan Chase - Primary...		
			Acct #2908031411-4, Main Plant Utilities - May 2022	8542 · Main Plant Utilities	Belvedere	-5,514.04
			Acct #2908031411-4, P.C. Plant Utilities - May 2022	8543 · Paradise Cove Utilities	Tiburon:Paradise...	-1,797.70
			Acct #2908031411-4, Main Plant Utilities - May 2022	8542 · Main Plant Utilities	Tiburon	-9,368.65
			Acct #2908031411-4, Belv Pump St Utilities - May 2022	8544 · Pump Station Utilities	Belvedere	-1,171.19
			Acct #2908031411-4, P.C. Pump St Utilities - May 2022	8544 · Pump Station Utilities	Tiburon:Paradise...	-244.27
			Acct #2908031411-4, Tib Pump St Utilities - May 2022	8544 · Pump Station Utilities	Tiburon	-1,646.76
TOTAL						-19,742.61
06/16/22	8989	Special District Risk Man...	Member #7665, Life, Vision, DDS & LTD Ins., July 2022 (AJE FY22-23)	JP Morgan Chase - Primary...		
			Employee Life & ADD Insurance - Inv #38468 - July 2022 (AJE FY22-23)	8020.05 · Employee Health	Belvedere	-48.91
			Employee Life & ADD Insurance - Inv #38468 - July 2022 (AJE FY22-23)	8020.05 · Employee Health	Tiburon:Paradise...	-3.97
			Employee Life & ADD Insurance - Inv #38468 - July 2022 (AJE FY22-23)	8020.05 · Employee Health	Tiburon	-83.12
			Employee LTD Insurance - Inv #38468 - July 2022 (AJE FY22-23)	8020.05 · Employee Health	Belvedere	-124.19
			Employee LTD Insurance - Inv #38468 - July 2022 (AJE FY22-23)	8020.05 · Employee Health	Tiburon:Paradise...	-10.08
			Employee LTD Insurance - Inv #38468 - July 2022 (AJE FY22-23)	8020.05 · Employee Health	Tiburon	-211.08
			Employee DDS Insurance - Inv #38468 - July 2022 (AJE FY22-23)	8020.05 · Employee Health	Belvedere	-322.92
			Employee DDS Insurance - Inv #38468 - July 2022 (AJE FY22-23)	8020.05 · Employee Health	Tiburon:Paradise...	-26.22
			Employee DDS Insurance - Inv #38468 - July 2022 (AJE FY22-23)	8020.05 · Employee Health	Tiburon	-548.85
			Employee Vision Insurance - Inv #38468 - July 2022 (AJE FY22-23)	8020.05 · Employee Health	Belvedere	-55.41
			Employee Vision Insurance - Inv #38468 - July 2022 (AJE FY22-23)	8020.05 · Employee Health	Tiburon:Paradise...	-4.50
			Employee Vision Insurance - Inv #38468 - July 2022 (AJE FY22-23)	8020.05 · Employee Health	Tiburon	-94.17
TOTAL						-1,533.42
06/16/22	8990	Staples, Inc.	Acct #60111000714, Office Supplies, May 2022	JP Morgan Chase - Primary...		
			Inv #3072269191, Order #9980584808, Office/Lab supplies, May 2022	6047 · Office Supplies	Belvedere	-18.39
			Inv #3072269191, Order #9980584808, Office/Lab supplies, May 2022	6047 · Office Supplies	Tiburon:Paradise...	-1.49
			Inv #3072269191, Order #9980584808, Office/Lab supplies, May 2022	6047 · Office Supplies	Tiburon	-31.26
			Inv #3072269191, Order #9980584808, Office/Lab supplies, May 2022	7025 · Lab Supplies & Chemi...	Belvedere	-18.95
			Inv #3072269191, Order #9980584808, Office/Lab supplies, May 2022	7025 · Lab Supplies & Chemi...	Tiburon	-32.19
TOTAL						-102.28
06/16/22	8991	Tiburon Mail Services	Cust ID#: 37/Account1, Postage - May 2022	JP Morgan Chase - Primary...		
			PO#753054: Returned TPS#5 Generator malfunctioning fuel pump - March...	6056 · Postage	Tiburon	-32.09
TOTAL						-32.09
06/16/22	8992	Rubio, Antonio	Reimb. for Travel (WEF), Meals/diem & Transp - May 2022	JP Morgan Chase - Primary...		
			Meals/Diem re WEFConference - Biosolids (Cont' Ed), 5.23.2022 - 5.27.2022	6018.1 · Meetings & Travel	Belvedere	-64.73

Sanitary Distr. No.5 of Marin Co.
Warrant List Detail
 June 10 through July 14, 2022

07/21/22

Date	Num	Name	Memo	Account	Class	Paid Amount
			Meals/Diem re WEFConference - Biosolids (Cont' Ed), 5.23.2022 - 5.27.2022	6018.1 · Meetings & Travel	Tiburon:Paradise...	-5.26
			Meals/Diem re WEFConference - Biosolids (Cont' Ed), 5.23.2022 - 5.27.2022	6018.1 · Meetings & Travel	Tiburon	-110.02
			Airfare re WEFConference - Biosolids (Cont' Ed), 5.23.2022 - 5.27.2022	6018.1 · Meetings & Travel	Belvedere	-168.72
			Airfare re WEFConference - Biosolids (Cont' Ed), 5.23.2022 - 5.27.2022	6018.1 · Meetings & Travel	Tiburon:Paradise...	-13.70
			Airfare re WEFConference - Biosolids (Cont' Ed), 5.23.2022 - 5.27.2022	6018.1 · Meetings & Travel	Tiburon	-286.77
TOTAL						-649.20
06/16/22	8993	Sewer Tek	Acct #400M14, M.P. P&L Relocating - June 2022	JP Morgan Chase - Primary...		
			Inv #2020/1067, Storage Tank Lateral Relocation - May - June 2022	7011 · Pumps & Lines Mainte...	Belvedere	-8,892.00
			Inv #2020/1067, Storage Tank Lateral Relocation - May - June 2022	7011 · Pumps & Lines Mainte...	Tiburon	-15,108.00
			Inv #2020/1067, Extend SD5 parking areas - May - June 2022	7022 · Plant Maint. Parts & S...	Belvedere	-3,705.00
			Inv #2020/1067, Extend SD5 parking areas - May - June 2022	7022 · Plant Maint. Parts & S...	Tiburon	-6,295.00
			Inv #2020/1067, Test, scope, line & repair M.P. drainage system - May - Ju...	7011 · Pumps & Lines Mainte...	Belvedere	-3,149.25
			Inv #2020/1067, Test, scope, line & repair M.P. drainage system - May - Ju...	7011 · Pumps & Lines Mainte...	Tiburon	-5,350.75
			Inv #2020/1067, Test, scope, line & repair M.P. Locker Room drainage syst...	7011 · Pumps & Lines Mainte...	Belvedere	-2,778.75
			Inv #2020/1067, Test, scope, line & repair M.P. Locker Room drainage syst...	7011 · Pumps & Lines Mainte...	Tiburon	-4,721.25
TOTAL						-50,000.00
06/16/22	8994	Verizon Wireless	Acct #0342125502-00001: iPhones & BPS Comm, June 2022	JP Morgan Chase - Primary...		
			Inv #9901157584: Monthly SD5 EE Cell phone Charges (@ \$175/mo.Plan...	8531 · Main Plant Telephones	Belvedere	-118.60
			Inv #9901157584: Monthly SD5 EE Cell phone Charges (@ \$175/mo.Plan...	8532 · Paradise Cove Teleph...	Tiburon:Paradise...	-9.63
			Inv #9901157584: Monthly SD5 EE Cell phone Charges (@ \$175/mo.Plan...	8531 · Main Plant Telephones	Tiburon	-201.58
			Inv #9901157584: Monthly Charges for BPS Telephone lines (BPS#2, #13...	8533 · Pumps & Lines Telep...	Belvedere	-35.00
			Inv #9901157584: Monthly Charges for P.C. PS Telephone lines (SF#1+#2...	8533 · Pumps & Lines Telep...	Tiburon:Paradise...	-35.00
			Inv #9901157584: Taxes, Gov't Surcharges & Fees, June 2022	8531 · Main Plant Telephones	Belvedere	-3.20
			Inv #9901157584: Taxes, Gov't Surcharges & Fees, June 2022	8532 · Paradise Cove Teleph...	Tiburon:Paradise...	-0.26
			Inv #9901157584: Taxes, Gov't Surcharges & Fees, June 2022	8531 · Main Plant Telephones	Tiburon	-5.44
TOTAL						-408.71
06/15/22	8995	Balf, Abigail	EE Incentive Program, CWEA Cert re Collxns (G1) - June 2022	JP Morgan Chase - Primary...		
			EE Incentive Program: CWEA Cert re Collxns Sys. Maintenance (G1), 6.16...	8005 · Employee Incentives	Belvedere	-359.60
			EE Incentive Program: CWEA Cert re Collxns Sys. Maintenance (G1), 6.16...	8005 · Employee Incentives	Tiburon:Paradise...	-29.20
			EE Incentive Program: CWEA Cert re Collxns Sys. Maintenance (G1), 6.16...	8005 · Employee Incentives	Tiburon	-611.20
TOTAL						-1,000.00
07/14/22	9001	Alameda Electrical Distrib...	Acct #56156: M.P.& P.C. Plants - June 2022 (FY21-22 AJE)	JP Morgan Chase - Primary...		
			Inv #S5310881.06 (Inv #954055), Inv #S5359429.001 (PO#954071), S534...	7027 · Electrical & Instrument	Belvedere	-927.29
			Inv #S5310881.06 (Inv #954055), Inv #S5359429.001 (PO#954071), S534...	7042 · Paradise Supplies & C...	Tiburon:Paradise...	-75.30
			Inv #S5310881.06 (Inv #954055), Inv #S5359429.001 (PO#954071), S534...	7027 · Electrical & Instrument	Tiburon	-1,576.08

Sanitary Distr. No.5 of Marin Co.
Warrant List Detail
 June 10 through July 14, 2022

07/21/22

Date	Num	Name	Memo	Account	Class	Paid Amount
TOTAL						-2,578.67
07/14/22	9002	Alhambra	Acct #547945611762129, Water - June (AJE FY21-22)	JP Morgan Chase - Primary...		
			Inv #12012314 062422, Water, 6.9.22 - 6.22.2022 - June (AJE FY21-22)	7023 · Janitorial Supplies & S...	Belvedere	-75.97
			Inv #12012314 062422, Water, 6.9.22 - 6.22.2022 - June (AJE FY21-22)	7042 · Paradise Supplies & C...	Tiburon:Paradise...	-6.17
			Inv #12012314 062422, Water, 6.9.22 - 6.22.2022 - June (AJE FY21-22)	7023 · Janitorial Supplies & S...	Tiburon	-129.13
TOTAL						-211.27
07/14/22	9003	Alliant Insurance Services	Acct #SANIDIS-03, Auto Ins. Policy Renewal FY22-23, July 2022	JP Morgan Chase - Primary...		
			Inv #2003522, FY22-23 Auto/Public Entity Physical Damage Policy Renewal	6033.3 · Physical Property D...	Belvedere	-1,742.84
			Inv #2003522, FY22-23 Auto/Public Entity Physical Damage Policy Renewal	6033.3 · Physical Property D...	Tiburon:Paradise...	-107.45
			Inv #2003522, FY22-23 Auto/Public Entity Physical Damage Policy Renewal	6033.3 · Physical Property D...	Tiburon	-2,447.71
TOTAL						-4,298.00
07/14/22	9004	Aquatic Informatics, Inc.	HACH WIMS Support - July 2022	JP Morgan Chase - Primary...		
			Quote# 00011930 - M.P. Equipment Support via Hach WIMS Support	7021 · Plant Maintenance Su...	Belvedere	-899.72
			Quote# 00011930 - M.P. Equipment Support via Hach WIMS Support	7022 · Plant Maint. Parts & S...	Tiburon	-1,268.28
TOTAL						-2,168.00
07/14/22	9005	AT&T	Acct #960732-76375559 - June 2022 (AJE FY21-22)	JP Morgan Chase - Primary...		
			PC Plant Telephones - June 2022 (AJE FY21-22)	8532 · Paradise Cove Teleph...	Tiburon:Paradise...	-518.14
			PC Pumps & Lines Telephones - June 2022 (AJE FY21-22)	8533 · Pumps & Lines Telep...	Tiburon:Paradise...	-8.27
			Tib Pumps & Lines Telephones - June 2022 (AJE FY21-22)	8533 · Pumps & Lines Telep...	Tiburon	-314.00
TOTAL						-840.41
07/14/22	9006	Caltronics Business Syst...	Acct #SD15, Multi-purpose Copier Contract, June 2022 (AJE FY21-22)	JP Morgan Chase - Primary...		
			Inv Inv #3532259, Konica Multi-purpose copier (C308) contract - June 2022...	6047 · Office Supplies	Belvedere	-50.06
			Inv Inv #3532259, Konica Multi-purpose copier (C308) contract - June 2022...	6047 · Office Supplies	Tiburon:Paradise...	-4.06
			Inv Inv #3532259, Konica Multi-purpose copier (C308) contract - June 2022...	6047 · Office Supplies	Tiburon	-85.09
TOTAL						-139.21
07/14/22	9008	Bilsborough, Chad	EE Incentive, June 2022 (AJE FY21-22)	JP Morgan Chase - Primary...		
			Employee Incentive/Con't Ed Stipend: Completion of CSUSac, Industrial W...	8005 · Employee Incentives	Belvedere	-359.60
			Employee Incentive/Con't Ed Stipend: Completion of CSUSac, Industrial W...	8005 · Employee Incentives	Tiburon:Paradise...	-29.20
			Employee Incentive/Con't Ed Stipend: Completion of CSUSac, Industrial W...	8005 · Employee Incentives	Tiburon	-611.20

07/21/22

Sanitary Distr. No.5 of Marin Co.
Warrant List Detail
 June 10 through July 14, 2022

Date	Num	Name	Memo	Account	Class	Paid Amount
			Employee Incentive/Con't Ed Stipend: Completion of CSUSac, Treatment o...	8005 · Employee Incentives	Belvedere	-359.60
			Employee Incentive/Con't Ed Stipend: Completion of CSUSac, Treatment o...	8005 · Employee Incentives	Tiburon:Paradise...	-29.20
			Employee Incentive/Con't Ed Stipend: Completion of CSUSac, Treatment o...	8005 · Employee Incentives	Tiburon	-611.20
			Employee Incentive/Con't Ed Stipend: Completion of CSUSac, Effective Uti...	8005 · Employee Incentives	Belvedere	-359.60
			Employee Incentive/Con't Ed Stipend: Completion of CSUSac, Effective Uti...	8005 · Employee Incentives	Tiburon:Paradise...	-29.20
			Employee Incentive/Con't Ed Stipend: Completion of CSUSac, Effective Uti...	8005 · Employee Incentives	Tiburon	-611.20
			Employee Incentive/Con't Ed Stipend: Completion of CSUSac, Water Treat...	8005 · Employee Incentives	Belvedere	-359.60
			Employee Incentive/Con't Ed Stipend: Completion of CSUSac, Water Treat...	8005 · Employee Incentives	Tiburon:Paradise...	-29.20
			Employee Incentive/Con't Ed Stipend: Completion of CSUSac, Water Treat...	8005 · Employee Incentives	Tiburon	-611.20
			Employee Incentive/Con't Ed Stipend: Completion of CSUSac, PreTreatme...	8005 · Employee Incentives	Belvedere	-359.60
			Employee Incentive/Con't Ed Stipend: Completion of CSUSac, PreTreatme...	8005 · Employee Incentives	Tiburon:Paradise...	-29.20
			Employee Incentive/Con't Ed Stipend: Completion of CSUSac, PreTreatme...	8005 · Employee Incentives	Tiburon	-611.20
TOTAL						-5,000.00
07/14/22	9009	Bilsborough, Chad	EE Incentive, June 2022 (AJE FY21-22)	JP Morgan Chase - Primary...		
			FY21-22 Safety Glasses Reimbursement - June 2022 (AJE FY21-22)	8515 · Safety	Belvedere	-94.37
			FY21-22 Safety Glasses Reimbursement - June 2022 (AJE FY21-22)	8515 · Safety	Tiburon:Paradise...	-7.66
			FY21-22 Safety Glasses Reimbursement - June 2022 (AJE FY21-22)	8515 · Safety	Tiburon	-160.41
			FY211-22 Reimbursement for CSU, Sac Class Materials - June 2022 (AJE ...	6020 · Continuing Education	Belvedere	-169.65
			FY211-22 Reimbursement for CSU, Sac Class Materials - June 2022 (AJE ...	6020 · Continuing Education	Tiburon:Paradise...	-13.78
			FY211-22 Reimbursement for CSU, Sac Class Materials - June 2022 (AJE ...	6020 · Continuing Education	Tiburon	-288.35
TOTAL						-734.22
07/14/22	9010	Omar Arias-Montez	Attendance at SD5 Board Mtgs, Jan - Jun 2022 (AJE FY21-22)	JP Morgan Chase - Primary...		
			Attendance at SD5 Board Mtgs, Jan - Jun 2022 (AJE FY21-22)	6024 · Director Fees	Belvedere	-215.76
			Attendance at SD5 Board Mtgs, Jan - Jun 2022 (AJE FY21-22)	6024 · Director Fees	Tiburon:Paradise...	-17.52
			Attendance at SD5 Board Mtgs, Jan - Jun 2022 (AJE FY21-22)	6024 · Director Fees	Tiburon	-366.72
TOTAL						-600.00
07/14/22	9011	Catharine Benediktsson	Attendance at SD5 Board Mtgs, Jan - Jun 2022 (AJE FY21-22)	JP Morgan Chase - Primary...		
			Attendance at SD5 Board Mtgs, Jan - Jun 2022 (AJE FY21-22)	6024 · Director Fees	Belvedere	-287.68
			Attendance at SD5 Board Mtgs, Jan - Jun 2022 (AJE FY21-22)	6024 · Director Fees	Tiburon:Paradise...	-23.36
			Attendance at SD5 Board Mtgs, Jan - Jun 2022 (AJE FY21-22)	6024 · Director Fees	Tiburon	-488.96
TOTAL						-800.00
07/14/22	9012	Tod Moody	Attendance at SD5 Board Mtgs, Jan - Jun 2022 (AJE FY21-22)	JP Morgan Chase - Primary...		
			Attendance at SD5 Board Mtgs, Jan - Jun 2022 (AJE FY21-22)	6024 · Director Fees	Belvedere	-215.76
			Attendance at SD5 Board Mtgs, Jan - Jun 2022 (AJE FY21-22)	6024 · Director Fees	Tiburon:Paradise...	-17.52
			Attendance at SD5 Board Mtgs, Jan - Jun 2022 (AJE FY21-22)	6024 · Director Fees	Tiburon	-366.72

Sanitary Distr. No.5 of Marin Co.
Warrant List Detail
 June 10 through July 14, 2022

07/21/22

Date	Num	Name	Memo	Account	Class	Paid Amount
TOTAL						-600.00
07/14/22	9013	Cintas Corporation #626	Acct #626-00821, PPE/Safetywear + Service, June 2022 (AJE FY21-22)	JP Morgan Chase - Primary...		
			PPE/Safetwear + Service: #4121330794, #4122057952, #4122731294, #4...	8520 · Personal Protection/S...	Belvedere	-50.46
			PPE/Safetwear + Service: #4121330794, #4122057952, #4122731294, #4...	8520 · Personal Protection/S...	Tiburon:Paradise...	-4.10
			PPE/Safetwear + Service: #4121330794, #4122057952, #4122731294, #4...	8520 · Personal Protection/S...	Tiburon	-85.77
TOTAL						-140.33
07/14/22	9014	Comcast Business	Acct# 8155 30 011 0149465, Bus. Voice, Internet & Cable, June 2022 (A...	JP Morgan Chase - Primary...		
			Bundle: Cable (\$218.25), May 2022	8510 · Data/Alarms/IT Supp ...	Belvedere	-91.36
			Bundle: Cable (\$218.25), May 2022	8510 · Data/Alarms/IT Supp ...	Tiburon:Paradise...	-7.42
			Bundle: Cable (\$218.25), May 2022	8510 · Data/Alarms/IT Supp ...	Tiburon	-155.27
			Bundle: Internet (\$19.95), May 2022	8510 · Data/Alarms/IT Supp ...	Belvedere	-7.17
			Bundle: Internet (\$19.95), May 2022	8510 · Data/Alarms/IT Supp ...	Tiburon:Paradise...	-0.58
			Bundle: Internet (\$19.95), May 2022	8510 · Data/Alarms/IT Supp ...	Tiburon	-12.20
			Bundle: Land Line Phones (\$249.50+ \$39.75 add'l Fees), May 2022	8531 · Main Plant Telephones	Belvedere	-104.01
			Bundle: Land Line Phones (\$249.50+ \$39.75 add'l Fees), May 2022	8532 · Paradise Cove Teleph...	Tiburon:Paradise...	-8.45
			Bundle: Land Line Phones (\$249.50+ \$39.75 add'l Fees), May 2022	8531 · Main Plant Telephones	Tiburon	-176.79
			Bundle: Taxes & Fees (+/- \$5 - varies/mo), June 2022 (AJE FY21-22)	8510 · Data/Alarms/IT Supp ...	Belvedere	-2.88
			Bundle: Taxes & Fees (+/- \$5 - varies/mo), June 2022 (AJE FY21-22)	8510 · Data/Alarms/IT Supp ...	Tiburon:Paradise...	-0.23
			Bundle: Taxes & Fees (+/- \$5 - varies/mo), June 2022 (AJE FY21-22)	8510 · Data/Alarms/IT Supp ...	Tiburon	-4.89
			Bundle: Taxes & Fees (+/- \$5 - varies/mo), June 2022 (AJE FY21-22)	8531 · Main Plant Telephones	Belvedere	-2.88
			Bundle: Taxes & Fees (+/- \$5 - varies/mo), June 2022 (AJE FY21-22)	8532 · Paradise Cove Teleph...	Tiburon:Paradise...	-0.23
			Bundle: Taxes & Fees (+/- \$5 - varies/mo), June 2022 (AJE FY21-22)	8531 · Main Plant Telephones	Tiburon	-4.88
TOTAL						-579.24
07/14/22	9015	CSRMA California Sanitat...	Phys. Property + W.C., FY2022-2023	JP Morgan Chase - Primary...		
			Inv #7029, Property Ins. Premium, 7.1.2022-6.30.2023	6033.1 · PLP Public Entity Ph...	Belvedere	-16,254.06
			Inv #6855, Property Insurance Premium, 7.1.2021-6.30.2022	6033.1 · PLP Public Entity Ph...	Tiburon:Paradise...	-1,002.10
			Inv #6855, Property Insurance Premium, 7.1.2021-6.30.2022	6033.1 · PLP Public Entity Ph...	Tiburon	-22,827.84
			Inv #7029, Property JPA Charge, 7.1.2022-6.30.2023	6033.1 · PLP Public Entity Ph...	Belvedere	-172.34
			Inv #7029, Property JPA Charge, 7.1.2022-6.30.2023	6033.1 · PLP Public Entity Ph...	Tiburon:Paradise...	-10.63
			Inv #7029, Property JPA Charge, 7.1.2022-6.30.2023	6033.1 · PLP Public Entity Ph...	Tiburon	-242.04
			Inv #7029, Property Program Directors' Fees, 7.1.2022-6.30.2023	6033.1 · PLP Public Entity Ph...	Belvedere	-508.09
			Inv #7029, Property Program Directors' Fees, 7.1.2022-6.30.2023	6033.1 · PLP Public Entity Ph...	Tiburon:Paradise...	-31.33
			Inv #7029, Property Program Directors' Fees, 7.1.2022-6.30.2023	6033.1 · PLP Public Entity Ph...	Tiburon	-713.58
			Inv #7029, Property Pooled Deposit, 7.1.2022-6.30.2023	6033.1 · PLP Public Entity Ph...	Belvedere	-1,539.33
			Inv #7029, Property Pooled Deposit, 7.1.2022-6.30.2023	6033.1 · PLP Public Entity Ph...	Tiburon:Paradise...	-94.90
			Inv #7029, Property Pooled Deposit, 7.1.2022-6.30.2023	6033.1 · PLP Public Entity Ph...	Tiburon	-2,161.90
			Inv #6804, W.C. Deposit, 7.1.2021-6.30.2022	8023 · Workers Comp Insura...	Belvedere	-12,676.74
			Inv #6804, W.C. Deposit, 7.1.2021-6.30.2022	8023 · Workers Comp Insura...	Tiburon:Paradise...	-781.55
			Inv #6804, W.C. Deposit, 7.1.2021-6.30.2022	8023 · Workers Comp Insura...	Tiburon	-17,803.70
			Inv #6804, W.C. Deposit, 7.1.2021-6.30.2022	8023 · Workers Comp Insura...	Belvedere	3,598.00

07/21/22

Sanitary Distr. No.5 of Marin Co.
Warrant List Detail
 June 10 through July 14, 2022

Date	Num	Name	Memo	Account	Class	Paid Amount
			Inv #6804, W.C. Deposit, 7.1.2021-6.30.2022	8023 · Workers Comp Insura...	Tiburon:Paradise...	221.83
			Inv #6804, W.C. Deposit, 7.1.2021-6.30.2022	8023 · Workers Comp Insura...	Tiburon	5,053.17
TOTAL						-67,947.13
07/14/22	9016	DKF Solutions Group, LLC	My Safety Officer Monthly Subscription + OSHA Consult - June (AJE F...	JP Morgan Chase - Primary...		
			Inv #20417, My Safety Officer Monthly Subscription Fee, July 2022	8515 · Safety	Belvedere	-141.93
			Inv #20417, My Safety Officer Monthly Subscription Fee, July 2022	8515 · Safety	Tiburon:Paradise...	-8.75
			Inv #20417, My Safety Officer Monthly Subscription Fee, July 2022	8515 · Safety	Tiburon	-199.32
			Inv #20580, CalOSHA Training Requirements, July 2022	8515 · Safety	Belvedere	-766.40
			Inv #20580, CalOSHA Training Requirements, July 2022	8515 · Safety	Tiburon:Paradise...	-47.25
			Inv #20580, CalOSHA Training Requirements, July 2022	8515 · Safety	Tiburon	-1,076.35
			Inv #20656, CalOSHA Training Requirements, June 2022 (AJE FY21-22)	8515 · Safety	Belvedere	-206.32
			Inv #20656, CalOSHA Training Requirements, June 2022 (AJE FY21-22)	8515 · Safety	Tiburon:Paradise...	-16.75
			Inv #20656, CalOSHA Training Requirements, June 2022 (AJE FY21-22)	8515 · Safety	Tiburon	-350.68
TOTAL						-2,813.75
07/14/22	9017	D&K Auto Service	SD5 Vehicle Maint., June 2022 (AJE FY21-22)	JP Morgan Chase - Primary...		
			Inv #71807 (PO #71807) -- 2004 Ford Ranger, Repair/Maintenance - June...	7072 · Maintenance	Belvedere	-52.88
			Inv #71807 (PO #71807) -- 2004 Ford Ranger, Repair/Maintenance - June...	7072 · Maintenance	Tiburon:Paradise...	-4.29
			Inv #71807 (PO #71807) -- 2004 Ford Ranger, Repair/Maintenance - June...	7072 · Maintenance	Tiburon	-89.87
TOTAL						-147.04
07/14/22	9018	Fastenal Company	CASA10962, M.P. Parts & Service, June 2022 (AJE FY21-22)	JP Morgan Chase - Primary...		
			Inv #CAPET61759 (PO#954148) - M.P. Supplies - June 2022 (AJE FY21-22)	7021 · Plant Maintenance Su...	Belvedere	-813.84
			Inv #CAPET61759 (PO#954148) - M.P. Supplies - June 2022 (AJE FY21-22)	7021 · Plant Maintenance Su...	Tiburon	-1,382.75
TOTAL						-2,196.59
07/14/22	9019	Friedman's Home Improv...	Acct #20070, PPE/Safetywear, June 2022 (AJE FY21-22)	JP Morgan Chase - Primary...		
			Inv #15112987 (PO#160255), June 2022 (AJE FY21-22)	8520 · Personal Protection/S...	Belvedere	-8.36
			Inv #15112987 (PO#160255), June 2022 (AJE FY21-22)	8520 · Personal Protection/S...	Tiburon	-0.68
			Inv #15112987 (PO#160255), June 2022 (AJE FY21-22)	8520 · Personal Protection/S...	Belvedere	-14.21
TOTAL						-23.25
07/14/22	9020	Goodman Building Suppl...	Acct #20070, M.P. & P.C. Supplies + P&L, June 2022 (AJE FY21-22)	JP Morgan Chase - Primary...		
			Inv #846711 (PO #954058) - BP&L - June 2022	7011 · Pumps & Lines Mainte...	Belvedere	-69.32
			Inv #850246 (PO#160260), Inv #849491 (PO#954068) - M.P. Supplies - Ju...	7021 · Plant Maintenance Su...	Belvedere	-65.24

Sanitary Distr. No.5 of Marin Co.
Warrant List Detail
 June 10 through July 14, 2022

07/21/22

Date	Num	Name	Memo	Account	Class	Paid Amount
			Inv #850246 (PO#160260), Inv #849491 (PO#954068) - M.P. Supplies - Ju...	7021 · Plant Maintenance Su...	Tiburon	-110.84
TOTAL						-245.40
07/14/22	9021	Grainger	Acct #810128785, Lab Supplies, June 2022 (AJE FY21-22)	JP Morgan Chase - Primary...		
			Inv #9362051402 / Inv #9360814207 (PO#160262), Inv #9362795479 (PO...	7025 · Lab Supplies & Chemi...	Belvedere	-151.90
			Inv #9360814215 / Inv #9361000756 (PO#286963) / Inv #9252706321 (PO...	7025 · Lab Supplies & Chemi...	Tiburon	-258.10
TOTAL						-410.00
07/14/22	9022	Frank Olsen Co., LLC	M.P. Digester Rehab Program - June 2021 (AJE FY20-21)	JP Morgan Chase - Primary...		
			Inv #249094 + Inv #249285 (PO#160872), P&L Pumps & Valves Rpcmnt - ...	9213.1 · Digester Roof Rehab	Belvedere	-25,713.67
			Inv #249094 + Inv #249285 (PO#160872), P&L Pumps & Valves Rpcmnt - ...	9213.1 · Digester Roof Rehab	Tiburon	-43,688.94
TOTAL						-69,402.61
07/14/22	9023	Harrington Industrial Plas...	Cust #:044227, M.P. Supplies - June (AJE FY21-22) + July 2022	JP Morgan Chase - Primary...		
			Inv #006N2709 (PO #160263), M.P. Supplies - July 2022	7021 · Plant Maintenance Su...	Belvedere	-304.97
			Inv #006N2709 (PO #160263), M.P. Supplies - July 2022	7021 · Plant Maintenance Su...	Tiburon	-429.89
			Inv #006N2178 (PO #954109), M.P. Supplies - June 2022 (AJE FY21-22)	7021 · Plant Maintenance Su...	Belvedere	-114.04
			Inv #006N2178 (PO #954109), M.P. Supplies - June 2022 (AJE FY21-22)	7021 · Plant Maintenance Su...	Tiburon	-193.76
TOTAL						-1,042.66
07/14/22	9024	HireRight, LLC	Acct #:272761, Background Check for J Mulloy (D.O.H.: 6.05.2022)	JP Morgan Chase - Primary...		
			Inv #G3470037, Background Check for J Mulloy, June 2022 (AJE FY21-22)	6017 · Consulting Fees	Belvedere	-31.57
			Inv #G3470037, Background Check for J Mulloy, June 2022 (AJE FY21-22)	6017 · Consulting Fees	Tiburon:Paradise...	-2.56
			Inv #G3470037, Background Check for J Mulloy, June 2022 (AJE FY21-22)	6017 · Consulting Fees	Tiburon	-53.65
TOTAL						-87.78
07/14/22	9025	Linscott Engineering Con...	SD5 P.C. P&L - September 2021 (AJE FY21-22)	JP Morgan Chase - Primary...		
			Inv #3761, Replace manhole frame + cover (Playa Verde), 9.22.2021 (AJE ...	7011 · Pumps & Lines Mainte...	Tiburon:Paradise...	-3,427.37
TOTAL						-3,427.37
07/14/22	9026	Lystek Int'l, LTD	Biosolids Transport - June 2022 (AJE FY21-22)	JP Morgan Chase - Primary...		
			Inv #153-552, Biosolids Transport to Lystek Facility - June 2022 (AJE FY21...	7029 · Main Plant Sludge Dis...	Belvedere	-289.86
			Inv #153-552, Biosolids Transport to Lystek Facility - June 2022 (AJE FY21...	7029 · Main Plant Sludge Dis...	Tiburon	-492.48

Sanitary Distr. No.5 of Marin Co.
Warrant List Detail
 June 10 through July 14, 2022

07/21/22

Date	Num	Name	Memo	Account	Class	Paid Amount
TOTAL						-782.34
07/14/22	9027	McC Campbell Analytical, Inc.	P.C. Monitoring, Acute & Aquatic Toxicity Testing - June 2022 (AJE FY...	JP Morgan Chase - Primary...		
			Inv #2206798 & 206E28 (PO#954166), P.C. Monitoring, Acute Mysid Rene...	7053 · Chronic Toxicity	Tiburon:Paradise...	-2,225.00
TOTAL						-2,225.00
07/14/22	9028	Marin Water	Water, May 2021 - June 2022 (AJE FY21-22)	JP Morgan Chase - Primary...		
			Cust #:424793, Golden Gate BPS - Water, May 2021 - June 2022 (AJE FY...	8541 · Water	Belvedere	-83.29
			Cust #:424791, Cove Rd. BPS - Water, May 2021 - June 2022 (AJE FY21-...	8541 · Water	Belvedere	-83.29
			Cust #:558095, San Rafael Ave. BPS - Water - May 2021 - June 2022 (AJ...	8541 · Water	Belvedere	-83.29
			Cust #138856, Mar West TPS - Water, May 2021 - June 2022 (AJE FY21-22)	8541 · Water	Tiburon	-87.73
			Cust #100098, M.P. - Water, 2021 - May 2021 - June 2022 (AJE FY21-22)	8541 · Water	Belvedere	-468.13
			Cust #100098, M.P. - Water, 2021 - May 2021 - June 2022 (AJE FY21-22)	8541 · Water	Tiburon	-795.38
TOTAL						-1,601.11
07/14/22	9029	Martin Bros. Supply	Tib. P&L - June 2022 (AJE FY21-22)	JP Morgan Chase - Primary...		
			Inv #15907 (PO#753065) / Inv #157907: 2 yards black barkrecycled road b...	7011 · Pumps & Lines Mainte...	Belvedere	-87.84
TOTAL						-87.84
07/14/22	9030	Medical Center of Marin, ...	Acct #:SDN5_B1, J. Mulloy/I Salazar - May 2022 (AJE FY21-22)	JP Morgan Chase - Primary...		
			Inv #00157927-00, Preemployment Screening: I Salazar (DOH: 7.6.2022/ J...	8020.05 · Employee Health	Belvedere	-174.05
			Inv #00157927-00, Preemployment Screening: I Salazar (DOH: 7.6.2022/ J...	8020.05 · Employee Health	Tiburon:Paradise...	-14.13
			Inv #00157927-00, Preemployment Screening: I Salazar (DOH: 7.6.2022/ J...	8020.05 · Employee Health	Tiburon	-295.82
TOTAL						-484.00
07/14/22	9031	Mill Valley Refuse Service...	Acct #063092, SLUDGE TRANSPORT - June 2022 (FY21-22)	JP Morgan Chase - Primary...		
			Acct #63092, Sludge Transport/Exchange only, 6.1.22, 6.6.2022, 6.11.202...	7029 · Main Plant Sludge Dis...	Belvedere	-800.28
			Acct #63092, Sludge Transport/Exchange only, 6.1.22, 6.6.2022, 6.11.202...	7029 · Main Plant Sludge Dis...	Tiburon	-1,359.72
TOTAL						-2,160.00
07/14/22	9032	Mill Valley Refuse Service...	Acct #032945, Garbage Service + 1 yd rental, June 2022 (AJE FY21-22)	JP Morgan Chase - Primary...		
			Garbage Service, Including 1 yd trash + 1 yd cardboard rental - June 2022	7023 · Janitorial Supplies & S...	Belvedere	-97.49
			Garbage Service, Including 1 yd trash + 1 yd cardboard rental - June 2022	7023 · Janitorial Supplies & S...	Tiburon	-165.63

Sanitary Distr. No.5 of Marin Co.
Warrant List Detail
 June 10 through July 14, 2022

07/21/22

Date	Num	Name	Memo	Account	Class	Paid Amount
TOTAL						-263.12
07/14/22	9033	Office Depot	Acct #6011 5642 0308 4271,Off. + Janitorial Supplies, May 2022 (AJE F...	JP Morgan Chase - Primary...		
			Inv #242825008001, #242904239001, #242904240001, Janitorial Supplies ...	7023 · Janitorial Supplies & S...	Belvedere	-121.49
			Inv #154018678002, Janitorial Supplies - May 2022 (AJE FY21-22)	7023 · Janitorial Supplies & S...	Tiburon	-206.41
			Inv #250296715001, 224904224001,#242904221001, Office Supplies - Ma...	6047 · Office Supplies	Belvedere	-302.00
			Inv #250296715001, 224904224001,#242904221001, Office Supplies - Ma...	6047 · Office Supplies	Tiburon	-513.12
TOTAL						-1,143.02
07/14/22	9034	Pacific Gas & Electric	Acct #2908031411-4, Utilities - June 2022 (AJE FY21-22)	JP Morgan Chase - Primary...		
			Acct #2908031411-4, Main Plant Utilities - June 2022 (AJE FY21-22)	8542 · Main Plant Utilities	Belvedere	-5,621.49
			Acct #2908031411-4, P.C. Plant Utilities - June 2022 (AJE FY21-22)	8543 · Paradise Cove Utilities	Tiburon:Paradise...	-2,092.96
			Acct #2908031411-4, Main Plant Utilities - June 2022 (AJE FY21-22)	8542 · Main Plant Utilities	Tiburon	-9,551.21
			Acct #2908031411-4, Belv Pump St Utilities - June 2022 (AJE FY21-22)	8544 · Pump Station Utilities	Belvedere	-1,376.97
			Acct #2908031411-4, P.C. Pump St Utilities - June 2022 (AJE FY21-22)	8544 · Pump Station Utilities	Tiburon:Paradise...	-291.30
			Acct #2908031411-4, Tib Pump St Utilities - June 2022 (AJE FY21-22)	8544 · Pump Station Utilities	Tiburon	-2,464.40
TOTAL						-21,398.33
07/14/22	9035	Robert L Talavera, LLC	SSGIS ArcView Support, June 2022 (AJE FY21-22)	JP Morgan Chase - Primary...		
			Inv #RLT0622F1, SSGIS ArcView Support: Upload pipe history data, install...	8510 · Data/Alarms/IT Supp ...	Belvedere	-309.69
			Inv #RLT0622F1, SSGIS ArcView Support: Upload pipe history data, install...	8510 · Data/Alarms/IT Supp ...	Tiburon:Paradise...	-25.49
			Inv #RLT0622F1, SSGIS ArcView Support: Upload pipe history data, install...	8510 · Data/Alarms/IT Supp ...	Tiburon	-526.37
TOTAL						-861.55
07/14/22	9036	Roy's Sewer Service, Inc.	P&L: M.P., Tiburon & Belvedere - June 2022 (AJE FY21-22)	JP Morgan Chase - Primary...		
			Inv #217330, Cleared line @ 87 Eastview Ave., 5.27.2022 (AJE FY21-22)	7011 · Pumps & Lines Mainte...	Tiburon	-475.00
			Inv #217448, Cleared roots at private lateral @ 62 Moreno Cir., 6.27.22 (AJ...	7011 · Pumps & Lines Mainte...	Tiburon	-570.00
			Inv #217404, Cleaned Main from Rodder Holes, basket to hole, 26 Eucalyp...	7011 · Pumps & Lines Mainte...	Belvedere	-190.00
			Inv #217502, Cleared 4" lateral @ 6 Bartel Ct., 6.22.2022 (AJE FY21-22)	7011 · Pumps & Lines Mainte...	Tiburon	-1,680.00
TOTAL						-2,915.00
07/14/22	9037	SASM	Bioassay Testing, Apr - Jun, 2022 (AJE FY21-22)	JP Morgan Chase - Primary...		
			Inv #3466, Bioassay testing service, Apr - Jun, 2022 (AJE FY21-22)	7051 · Main Plant Lab Monito...	Belvedere	-444.60
			Inv #3466, Bioassay testing service, Apr - Jun, 2022 (AJE FY21-22)	7051 · Main Plant Lab Monito...	Tiburon	-755.40
TOTAL						-1,200.00

07/21/22

Sanitary Distr. No.5 of Marin Co.
Warrant List Detail
 June 10 through July 14, 2022

Date	Num	Name	Memo	Account	Class	Paid Amount
07/14/22	9038	Special District Risk Man...	Member #7665, Life, Vision, DDS & LTD Ins. - August 2022	JP Morgan Chase - Primary...		
			Employee Life & ADD Insurance - Inv #39018 - August 2022	8020.05 · Employee Health	Belvedere	-55.15
			Employee Life & ADD Insurance - Inv #39018 - August 2022	8020.05 · Employee Health	Tiburon:Paradise...	-3.40
			Employee Life & ADD Insurance - Inv #39018 - August 2022	8020.05 · Employee Health	Tiburon	-77.45
			Employee LTD Insurance - Inv #39018 - August 2022	8020.05 · Employee Health	Belvedere	-140.04
			Employee LTD Insurance - Inv #39018 - August 2022	8020.05 · Employee Health	Tiburon:Paradise...	-8.63
			Employee LTD Insurance - Inv #39018 - August 2022	8020.05 · Employee Health	Tiburon	-196.68
			Employee DDS Insurance - Inv #39018 - August 2022	8020.05 · Employee Health	Belvedere	-364.13
			Employee DDS Insurance - Inv #39018 - August 2022	8020.05 · Employee Health	Tiburon:Paradise...	-22.45
			Employee DDS Insurance - Inv #39018 - August 2022	8020.05 · Employee Health	Tiburon	-511.41
			Employee Vision Insurance - Inv #39018 - August 2022	8020.05 · Employee Health	Belvedere	-62.48
			Employee Vision Insurance - Inv #39018 - August 2022	8020.05 · Employee Health	Tiburon:Paradise...	-3.85
			Employee Vision Insurance - Inv #39018 - August 2022	8020.05 · Employee Health	Tiburon	-87.75
TOTAL						-1,533.42
07/14/22	9039	Staples, Inc.	Acct #60111000714, Office Supplies - June 2022 (AJE FY21-22)	JP Morgan Chase - Primary...		
			Inv #9908789643, Order #9909164785, Office/Lab supplies - June 2022 (A...	6047 · Office Supplies	Belvedere	-53.19
			Inv #9908789643, Order #9909164785, Office/Lab supplies - June 2022 (A...	6047 · Office Supplies	Tiburon:Paradise...	-4.32
			Inv #9908789643, Order #9909164785, Office/Lab supplies - June 2022 (A...	6047 · Office Supplies	Tiburon	-90.40
TOTAL						-147.91
07/14/22	9040	The Ark Publishing Co. Inc.	Public Notice Listing - May 2022 (AJE FY21-22)	JP Morgan Chase - Primary...		
			Inv #10700, Public Notice Listing - May 2022 (AJE FY21-22)	6001 · Advertising	Belvedere	-93.50
			Inv #10700, Public Notice Listing - May 2022 (AJE FY21-22)	6001 · Advertising	Tiburon:Paradise...	-7.59
			Inv #10700, Public Notice Listing - May 2022 (AJE FY21-22)	6001 · Advertising	Tiburon	-158.91
TOTAL						-260.00
07/14/22	9041	Town of Tiburon	Fuel - April + May 2022 (AJE FY21-22)	JP Morgan Chase - Primary...		
			Fuel - April + May 2022 (AJE FY21-22)	7071 · Fuel	Belvedere	-1,251.06
			Fuel - April + May 2022 (AJE FY21-22)	7071 · Fuel	Tiburon:Paradise...	-101.59
			Fuel - April + May 2022 (AJE FY21-22)	7071 · Fuel	Tiburon	-2,126.38
TOTAL						-3,479.03
07/14/22	9042	Water Components & Bui...	Acct #454, M.P. Supplies - May 2022 (AJE FY21-22)	JP Morgan Chase - Primary...		
			Inv #30581696 (PO#954061), Inv #30580990 (PO#954056), M.P. Maint. S...	7021 · Plant Maintenance Su...	Belvedere	-441.67
			Inv #30581696 (PO#954061), Inv #30580990 (PO#954056), M.P. Maint. S...	7021 · Plant Maintenance Su...	Tiburon	-750.41
TOTAL						-1,192.08

Sanitary Distr. No.5 of Marin Co.

Warrant List Detail

June 10 through July 14, 2022

07/21/22

Date	Num	Name	Memo	Account	Class	Paid Amount
07/14/22	9043	Waste Management of Re...	Acct #507-0000190-1507-2, Sludge Disposal - June 2022 (AJE FY21-22)	JP Morgan Chase - Primary...		
			Inv #0105630-1507-1 Sludge Disposal - 6 Drop-offs + Reg-waste approval ...	7029 · Main Plant Sludge Dis...	Belvedere	-611.41
			Inv #0105630-1507-1 Sludge Disposal - 6 Drop-offs + Reg-waste approval ...	7029 · Main Plant Sludge Dis...	Tiburon	-1,038.81
TOTAL						-1,650.22
07/14/22	9044	WorkSmart Automation, I...	SD5 Comm System Maintenance - May 2022 (AJE FY21-22)	JP Morgan Chase - Primary...		
			Inv #5208, SCADA Programming/Assist TelStar - new installation; new stat...	8510 · Data/Alarms/IT Supp ...	Belvedere	-620.00
TOTAL						-620.00
07/14/22	9045	Balf, Abigail	EE Incentive Program - June 2022 (AJE FY21-22)	JP Morgan Chase - Primary...		
			EE Incentive Program: WWTP Ops & Maint re Collxn (V1), Cert #590180, J...	8005 · Employee Incentives	Belvedere	-359.60
			EE Incentive Program: WWTP Ops & Maint re Collxn (V1), Cert #590180, J...	8005 · Employee Incentives	Tiburon:Paradise...	-29.20
			EE Incentive Program: WWTP Ops & Maint re Collxn (V1), Cert #590180, J...	8005 · Employee Incentives	Tiburon	-611.20
TOTAL						-1,000.00
07/14/22	9046	Rosser, John	S/B Reimb - June 2022 (AJE FY21-22)	JP Morgan Chase - Primary...		
			Standby Mileage Reimb. for Belvedere P&L, thru 6.11.2022 - (AJE FY21-22)	6018.2 · Standby Mileage Ex...	Belvedere	-18.98
			Standby Mileage Reimb. for Tiburon P&L, thru 6.11.2022 - (AJE FY21-22)	6018.2 · Standby Mileage Ex...	Tiburon	-32.25
TOTAL						-51.23
07/14/22	9047	US Bank	Acct#:4246 0445 5565 3611, May - June 2022 (AJE FY21-22)	JP Morgan Chase - Primary...		
			Operator I Posting (CWEA, WEF, Bayworks, SRJC, SJC,)	6001 · Advertising	Belvedere	-193.82
			Operator I Posting (CWEA, WEF, Bayworks, SRJC, SJC,)	6001 · Advertising	Tiburon:Paradise...	-15.74
			Operator I Posting (CWEA, WEF, Bayworks, SRJC, SJC,)	6001 · Advertising	Tiburon	-329.44
			#0822:/9545: Zoom Platform re SD5 Meetings	6018.1 · Meetings & Travel	Belvedere	-19.77
			#0822:/9545: Zoom Platform re SD5 Meetings	6018.1 · Meetings & Travel	Tiburon:Paradise...	-1.61
			#0822:/9545: Zoom Platform re SD5 Meetings	6018.1 · Meetings & Travel	Tiburon	-33.61
			#0822: TR to OH for Seminar/Training, 5.30.2022	6018.1 · Meetings & Travel	Belvedere	-318.73
			#0822: TR to OH for Seminar/Training, 5.30.2022	6018.1 · Meetings & Travel	Tiburon:Paradise...	-25.88
			#0822: TR to OH for Seminar/Training, 5.30.2022	6018.1 · Meetings & Travel	Tiburon	-541.74
			Smaller desks/more space; breakdown & disposal of old office furniture	6047 · Office Supplies	Belvedere	-1,912.67
			Smaller desks/more space; breakdown & disposal of old office furniture	6047 · Office Supplies	Tiburon:Paradise...	-155.31
			Smaller desks/more space; breakdown & disposal of old office furniture	6047 · Office Supplies	Tiburon	-3,250.91
			#0822:/9545: USPO Return-Receipts postage, 6.08.2022	6056 · Postage	Belvedere	-9.69
			#0822:/9545: USPO Return-Receipts postage, 6.08.2022	6056 · Postage	Tiburon:Paradise...	-0.79
			#0822:/9545: USPO Return-Receipts postage, 6.08.2022	6056 · Postage	Tiburon	-16.47
			#0822/9545: P&L - new & replacement hoses	7011 · Pumps & Lines Mainte...	Belvedere	-529.65
			#0822/9545: P&L - new & replacement hoses	7011 · Pumps & Lines Mainte...	Tiburon:Paradise...	-43.01

Sanitary Distr. No.5 of Marin Co.
Warrant List Detail
 June 10 through July 14, 2022

07/21/22

Date	Num	Name	Memo	Account	Class	Paid Amount
			#0822/9545: P&L - new & replacement hoses	7011 · Pumps & Lines Mainte...	Tiburon	-900.22
			#0822:/9545: M.P. Supplies & Tools: Amazon, Harbor Freight, K&N Engine...	7021 · Plant Maintenance Su...	Belvedere	-284.61
			#0822:/9545: M.P. Supplies & Tools: Amazon, Harbor Freight, K&N Engine...	7021 · Plant Maintenance Su...	Tiburon	-483.57
			#0822/9545: Amazon - lab supplies	7025 · Lab Supplies & Chemi...	Belvedere	-169.10
			#0822/9545: Amazon - lab supplies	7025 · Lab Supplies & Chemi...	Tiburon	-287.32
			#0822:/9545: Pocket medical charts; COVID Test Kits	8515 · Safety	Belvedere	-161.79
			#0822:/9545: Pocket medical charts; COVID Test Kits	8515 · Safety	Tiburon:Paradise...	-13.14
			#0822:/9545: Pocket medical charts; COVID Test Kits	8515 · Safety	Tiburon	-275.00
			#0822:/#9545: Comcast (arrived after SD5 cut-off)	8533 · Pumps & Lines Telep...	Belvedere	-206.89
			#0822:/#9545: Comcast (arrived after SD5 cut-off)	8532 · Paradise Cove Teleph...	Belvedere	-16.80
			#0822:/#9545: Comcast (arrived after SD5 cut-off)	8532 · Paradise Cove Teleph...	Tiburon:Paradise...	-351.65
TOTAL						-10,548.93
07/14/22	9048	Univar	Cust ID #STDT001, Chemicals - June 2022 (AJE FY21-22)	JP Morgan Chase - Primary...		
			Inv #20382938 (PO #160258), Sodium Bisulfite 25% (\$1.300/Gal) - June 2...	7024 · Main Plant Chemicals	Belvedere	-2,485.73
			Inv #20382938 (PO #160258), Sodium Bisulfite 25% (\$1.300/Gal) - June 2...	7042 · Paradise Supplies & C...	Tiburon:Paradise...	-201.84
			Inv #20382938 (PO #160258), Sodium Bisulfite 25% (\$1.300/Gal) - June 2...	7024 · Main Plant Chemicals	Tiburon	-4,224.92
TOTAL						-6,912.49
07/14/22	9050	Banshee Networks, Inc.	Computer/IT Support, E-Media Installations - June 2022 (AJE FY21-22)	JP Morgan Chase - Primary...		
			Inv #15461 & Inv #15464: New Ops Laptop 7424 (re call-outs) + Electronic ...	8510 · Data/Alarms/IT Supp ...	Belvedere	-2,196.73
			Inv #15461 & Inv #15464: New Ops Laptop 7424 (re call-outs) + Electronic ...	8510 · Data/Alarms/IT Supp ...	Tiburon:Paradise...	-178.38
			Inv #15461 & Inv #15464: New Ops Laptop 7424 (re call-outs) + Electronic ...	8510 · Data/Alarms/IT Supp ...	Tiburon	-3,733.70
			Inv #15472: May SD5 IT Support/Installations) & Inv #15473: June Sd5 IT ...	8510 · Data/Alarms/IT Supp ...	Belvedere	-1,924.60
			Inv #15472: May SD5 IT Support/Installations) & Inv #15473: June Sd5 IT ...	8510 · Data/Alarms/IT Supp ...	Tiburon:Paradise...	-156.28
			Inv #15472: May SD5 IT Support/Installations) & Inv #15473: June Sd5 IT ...	8510 · Data/Alarms/IT Supp ...	Tiburon	-3,271.19
TOTAL						-11,460.88
07/14/22	9051	Bay Alarm	Acct #274428, July - September 2022	JP Morgan Chase - Primary...		
			Inv #274428220615M, Alarm Monitoring Fees - Security, Burglar & Fire, 7...	8510 · Data/Alarms/IT Supp ...	Belvedere	-104.62
			Inv #274428220615M, Alarm Monitoring Fees - Security, Burglar & Fire, 7...	8510 · Data/Alarms/IT Supp ...	Tiburon:Paradise...	-6.45
			Inv #274428220615M, Alarm Monitoring Fees - Security, Burglar & Fire, 7...	8510 · Data/Alarms/IT Supp ...	Tiburon	-146.93
TOTAL						-258.00
07/14/22	9052	Bay City Boiler	Acct #274428, M.P. Boiler - March & June 2022 (AJE FY21-22)	JP Morgan Chase - Primary...		
			Inv #W18739 (PO#160257) & Inv #W18739, M.P. service call - March & Ju...	7022 · Plant Maint. Parts & S...	Belvedere	-903.61
			Inv #W18739 (PO#160257) & Inv #W18739, M.P. service call - March & Ju...	7022 · Plant Maint. Parts & S...	Tiburon:Paradise...	-1,535.28
			Inv #J002011 (PO#954159), Retube at M.P. Boiler - June 2022 (AJE FY21-...	7022 · Plant Maint. Parts & S...	Belvedere	-12,713.71
			Inv #J002011 (PO#954159), Retube at M.P. Boiler - June 2022 (AJE FY21-...	7022 · Plant Maint. Parts & S...	Tiburon	-21,601.29

Sanitary Distr. No.5 of Marin Co.

Warrant List Detail

June 10 through July 14, 2022

07/21/22

Date	Num	Name	Memo	Account	Class	Paid Amount
TOTAL						-36,753.89
07/14/22	9053	Verizon Wireless	Acct #0342125502-00001: iPhones & BPS Comm, July 2022	JP Morgan Chase - Primary...		
			Inv #9901157584: Monthly SD5 EE Cell phone Charges (@ \$175/mo.Plan...	8531 · Main Plant Telephones	Belvedere	-133.74
			Inv #9901157584: Monthly SD5 EE Cell phone Charges (@ \$175/mo.Plan...	8532 · Paradise Cove Teleph...	Tiburon:Paradise...	-8.25
			Inv #9901157584: Monthly SD5 EE Cell phone Charges (@ \$175/mo.Plan...	8531 · Main Plant Telephones	Tiburon	-187.83
			Inv #9901157584: Monthly Charges for BPS Telephone lines (BPS#2, #13...	8533 · Pumps & Lines Telep...	Belvedere	-35.00
			Inv #9901157584: Monthly Charges for P.C. PS Telephone lines (SF#1+#2...	8533 · Pumps & Lines Telep...	Tiburon:Paradise...	-35.00
			Inv #9901157584: Taxes, Gov't Surcharges & Fees, July 2022	8531 · Main Plant Telephones	Belvedere	-3.96
			Inv #9901157584: Taxes, Gov't Surcharges & Fees, July 2022	8532 · Paradise Cove Teleph...	Tiburon:Paradise...	-0.24
			Inv #9901157584: Taxes, Gov't Surcharges & Fees, July 2022	8531 · Main Plant Telephones	Tiburon	-5.56
TOTAL						-409.58
07/14/22	9054	Brelje and Race Laborato...	M.P./P.C. Plant Samples, April - May 2022 (AJE FY21-22)	JP Morgan Chase - Primary...		
			Inv #142144, #142835: M.P. Samples for April - May 2022 (AJE FY21-22)	7051 · Main Plant Lab Monito...	Belvedere	-944.03
			Inv #142144, #142835: P.C. Samples for April - May 2022 (AJE FY21-22)	7052 · Paradise Cove Monito...	Tiburon:Paradise...	-435.00
			Inv #142144, #142835: M.P. Samples for April - May 2022 (AJE FY21-22)	7051 · Main Plant Lab Monito...	Tiburon	-1,603.97
TOTAL						-2,983.00
07/14/22	9055	Burke, Williams & Sorens...	Legal Advice, April & May, 2022 (AJE FY21-22)	JP Morgan Chase - Primary...		
			Inv #285484, DCS, April 2022 (AJE FY21-22)	6039 · Legal	Belvedere	-362.48
			Inv #285484, DCS, April 2022 (AJE FY21-22)	6039 · Legal	Tiburon:Paradise...	-29.43
			Inv #285484, DCS, April 2022 (AJE FY21-22)	6039 · Legal	Tiburon	-616.09
			Inv #285484, HR, April 2022 (AJE FY21-22)	6039 · Legal	Belvedere	-1,784.87
			Inv #285484, HR, April 2022 (AJE FY21-22)	6039 · Legal	Tiburon:Paradise...	-144.93
			Inv #285484, HR, April 2022 (AJE FY21-22)	6039 · Legal	Tiburon	-3,033.70
			Inv #285484, ADUs, April 2022 (AJE FY21-22)	6039 · Legal	Belvedere	-135.93
			Inv #285484, ADUs, April 2022 (AJE FY21-22)	6039 · Legal	Tiburon:Paradise...	-11.04
			Inv #285484, ADUs, April 2022 (AJE FY21-22)	6039 · Legal	Tiburon	-231.03
			Inv #285484, Prop 218, April 2022 (AJE FY21-22)	6039 · Legal	Belvedere	-22.65
			Inv #285484, Prop 218, April 2022 (AJE FY21-22)	6039 · Legal	Tiburon:Paradise...	-1.84
			Inv #285484, Prop 218, April 2022 (AJE FY21-22)	6039 · Legal	Tiburon	-38.51
			Inv #286673, DCS, May 2022 (AJE FY21-22)	6039 · Legal	Belvedere	-317.17
			Inv #286673, DCS, May 2022 (AJE FY21-22)	6039 · Legal	Tiburon:Paradise...	-25.75
			Inv #286673, DCS, May 2022 (AJE FY21-22)	6039 · Legal	Tiburon	-539.08
			Inv #286673, HR, May 2022 (AJE FY21-22)	6039 · Legal	Belvedere	-3,205.65
			Inv #286673, HR, May 2022 (AJE FY21-22)	6039 · Legal	Tiburon:Paradise...	-260.30
			Inv #286673, HR, May 2022 (AJE FY21-22)	6039 · Legal	Tiburon	-5,448.54
			Inv #286673, ADUs, May 2022 (AJE FY21-22)	6039 · Legal	Belvedere	-213.60
			Inv #286673, ADUs, May 2022 (AJE FY21-22)	6039 · Legal	Tiburon:Paradise...	-17.34
			Inv #286673, ADUs, May 2022 (AJE FY21-22)	6039 · Legal	Tiburon	-363.07
TOTAL						-16,803.00

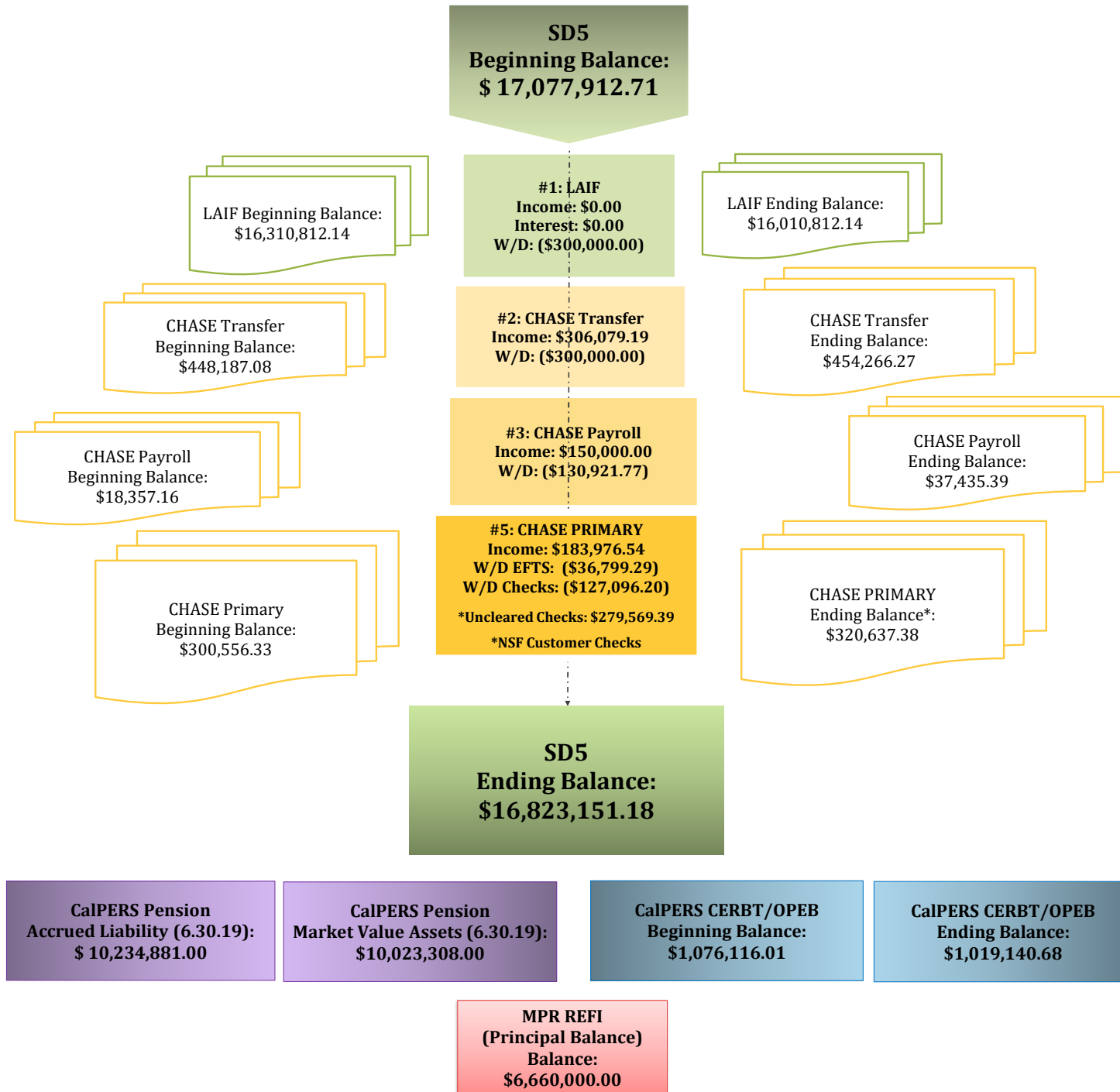
Sanitary Distr. No.5 of Marin Co.
Warrant List Detail
 June 10 through July 14, 2022

07/21/22

Date	Num	Name	Memo	Account	Class	Paid Amount
07/14/22	9056	Caltest Analytical Laborat...	M.P./P.C. Lab Sampling - June 2022 (AJE FY21-22) M.P. - B: #633533, #633597, #633721, #634008, #634017, #634127, #634... P.C.: #633682, #633719 - June 2022 (AJE FY21-22) M.P. - B: #633533, #633597, #633721, #634008, #634017, #634127, #634...	JP Morgan Chase - Primary... 7051 · Main Plant Lab Monito... 7052 · Paradise Cove Monito... 7051 · Main Plant Lab Monito...	Belvedere Tiburon:Paradise... Tiburon	-737.33 -271.70 -1,252.77
TOTAL						-2,261.80
07/14/22	9057	John Carapiet	Attendance at SD5 Board Mtgs, Jan - Jun 2022 (AJE FY21-22) Attendance at SD5 Board Mtgs, Jan - Jun 2022 (AJE FY21-22) Attendance at SD5 Board Mtgs, Jan - Jun 2022 (AJE FY21-22) Attendance at SD5 Board Mtgs, Jan - Jun 2022 (AJE FY21-22)	JP Morgan Chase - Primary... 6024 · Director Fees 6024 · Director Fees 6024 · Director Fees	Belvedere Tiburon:Paradise... Tiburon	-323.64 -26.28 -550.08
TOTAL						-900.00
07/14/22	9058	Richard Snyder	Attendance at SD5 Board Mtgs, Jan - Jun 2022 (AJE FY21-22) Attendance at SD5 Board Mtgs, Jan - Jun 2022 (AJE FY21-22) Attendance at SD5 Board Mtgs, Jan - Jun 2022 (AJE FY21-22) Attendance at SD5 Board Mtgs, Jan - Jun 2022 (AJE FY21-22)	JP Morgan Chase - Primary... 6024 · Director Fees 6024 · Director Fees 6024 · Director Fees	Belvedere Tiburon:Paradise... Tiburon	-323.64 -26.28 -550.08
TOTAL						-900.00
07/14/22	9059	Access Answering Service	Acct #4080C, Answering Service, July 2022 Inv #27948, Answering Service, July 2022 - SSO & Alarm Notifications Inv #27948, Answering Service, July 2022 - SSO & Alarm Notifications Inv #27948, Answering Service, July 2022 - SSO & Alarm Notifications	JP Morgan Chase - Primary... 8510 · Data/Alarms/IT Supp ... 8510 · Data/Alarms/IT Supp ... 8510 · Data/Alarms/IT Supp ...	Belvedere Tiburon:Paradise... Tiburon	-26.76 -1.65 -37.59
TOTAL						-66.00
07/14/22	9060	Nute Engineering Corp.	Consulting & Engr. Srvcs., June (AJE FY21-22) & July 2022 Inv #22123, FY22-23 Sewer Improvement Project, Belvedere - June 2022 (... Inv #22123, FY22-23 Sewer Improvement Project, Belvedere - June 2022 (... Inv #22078, FY22-23 Sewer Improvement Project, Belvedere - July 2022 Inv #22078, FY22-23 Sewer Improvement Project, Belvedere - July 2022	JP Morgan Chase - Primary... 6017 · Consulting Fees 6017 · Consulting Fees 6017 · Consulting Fees 6017 · Consulting Fees	Belvedere Tiburon Belvedere Tiburon	-3,579.01 -6,080.94 -7,317.90 -10,315.60
TOTAL						-27,293.45

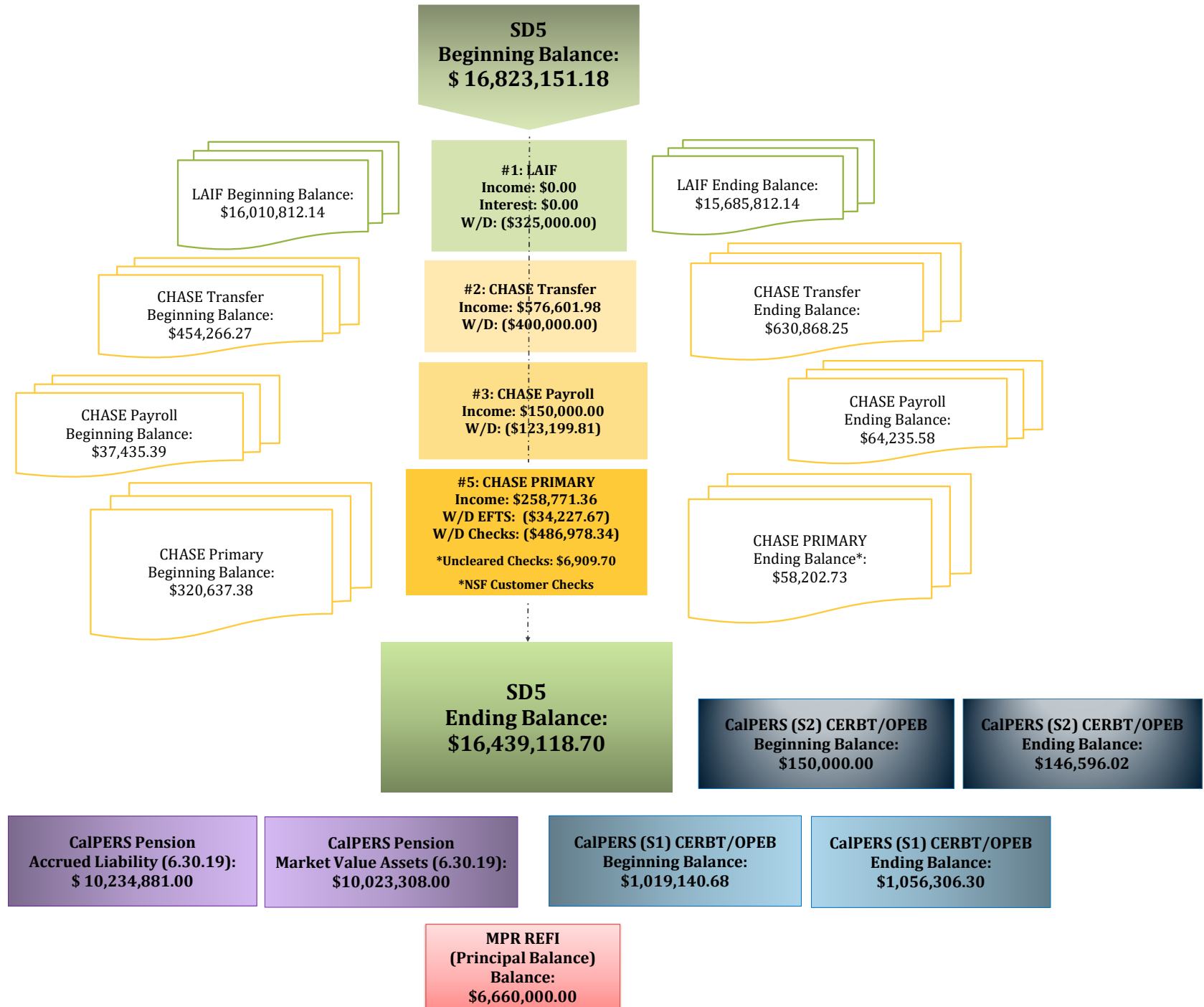
CASH FLOW CHART

SANITARY DISTRICT NO. 5 OF MARIN COUNTY: May 2022



CASH FLOW CHART

SANITARY DISTRICT NO. 5 OF MARIN COUNTY: June 2022





NOTICE OF AUTOMATIC PAYMENT

Paychex of New York LLC
1535 Scenic Avenue Suite 100
Costa Mesa CA 92626

Client # 0082 Y400-2116
Invoice # 2022060901

AUTOMATIC PAYMENT \$243.63

This amount will be deducted from the following bank account at or after 12:01 A.M on 6/15/22.

XXXXXXXXXXXXXXXXX506

ADDRESS SERVICE REQUESTED

0082 Y400-2116
SANITARY DISTRICT NO 5
2001 Paradise Dr
Tiburon, California 94920-1937

For questions regarding your account, please call (844) 729-9247

Page 1 of 1

ACCOUNT SUMMARY				AMOUNT
Previous Balance on Invoice#2022052601 Due 05/31/22				236.03
Payment Received - Thank You				-236.03
Balance Forward				0.00
Total New Charges				243.63
Account Balance (Includes Balance Forward, New Charges, and Pending Automatic Payments)				243.63

CHECK DATE	DESCRIPTION OF SERVICE	PROCESSING DATE	# TRANSACTIONS	AMOUNT
NEW CHARGES				
06/15/22	Paychex Productivity	06/09/22	10	316.50
	Delivery		1	15.75
	Client Discount		1	-88.62
	Total New Charges			243.63
Automatic Payment (Includes New Charges and applicable credits from Balance Forward above)				243.63

Thank you for choosing Paychex.

CASH REQUIREMENTS

CASH REQUIRED FOR NEGOTIABLE CHECKS &/OR ELECTRONIC FUNDS TRANSFERS (EFT) FOR CHECK DATE 06/15/22: \$61,330.15

IMPORTANT COVID-19 INFORMATION: If you filed IRS Form 7200, please notify your Paychex representative to avoid owing a balance at the end of the quarter and ensure your Form 941 is accurate.

TRANSACTION SUMMARY

SUMMARY BY TRANSACTION TYPE -	TOTAL ELECTRONIC FUNDS TRANSFER (EFT)	61,330.15
	CASH REQUIRED FOR NEGOTIABLE CHECKS &/OR EFT	61,330.15
	TOTAL REMAINING DEDUCTIONS / WITHHOLDINGS / LIABILITIES	4,758.66
	CASH REQUIRED FOR CHECK DATE 06/15/22	66,088.81

TRANSACTION DETAIL

ELECTRONIC FUNDS TRANSFER - *Your financial institution will initiate transfer to Paychex at or after 12:01 A.M. on transaction date.*

<u>TRANS. DATE</u>	<u>BANK NAME</u>	<u>ACCOUNT NUMBER</u>	<u>PRODUCT</u>	<u>DESCRIPTION</u>	<u>BANK DRAFT AMOUNTS & OTHER TOTALS</u>
06/14/22	JPMORGAN CHASE BANK,	xxxxxxxxxxxxx506	Direct Deposit	Net Pay Allocations	37,359.16
					EFT FOR 06/14/22
06/15/22	JPMORGAN CHASE BANK,	xxxxxxxxxxxxx506	Taxpay@	Employee Withholdings	37,359.16
					Social Security 3,800.76
					Medicare 888.89
					Fed Income Tax 10,399.10
					CA Income Tax 4,192.58
					Total Withholdings 19,281.33
					Employer Liabilities
					Social Security 3,800.76
					Medicare 888.90
					Total Liabilities 4,689.66
					EFT FOR 06/15/22
					23,970.99
					TOTAL EFT
					61,330.15

ole
R
TOTAL

REMAINING DEDUCTIONS / WITHHOLDINGS / LIABILITIES - *Paychex does not remit these funds. You must ensure accurate and timely payment of applicable items.*

<u>TRANS. DATE</u>	<u>BANK NAME</u>	<u>ACCOUNT NUMBER</u>	<u>PRODUCT</u>	<u>DESCRIPTION</u>	
06/15/22	Refer to your records for account Information		Payroll	Employee Deductions	
					401A Member Contribu 2,572.61
					Calpers 457B 1,439.61
					Calpers 457B Roth 650.00
					Med 125 96.44
					Total Deductions 4,758.66

TOTAL REMAINING DEDUCTIONS / WITHHOLDINGS / LIABILITIES **4,758.66**

NOTICE OF AUTOMATIC PAYMENT

PAYCHEX

Paychex of New York LLC
 1535 Scenic Avenue Suite 100
 Costa Mesa CA 92626

Client # 0082 Y400-2116
 Invoice # 2022062901

AUTOMATIC PAYMENT \$247.70

This amount will be deducted from the following bank account at or after 12:01 A.M on 6/30/22.

ADDRESS SERVICE REQUESTED

0082 Y400-2116
 SANITARY DISTRICT NO 5
 2001 Paradise Dr
 Tiburon, California 94920-1937

XXXXXXXXXXXXXXXXX506

For questions regarding your account, please call (844) 729-9247

Page 1 of 1

ACCOUNT SUMMARY				AMOUNT
Previous Balance on Invoice#2022060901 Due 06/15/22				243.63
Payment Received - Thank You				-243.63
Balance Forward				0.00
Total New Charges				247.70
Account Balance (Includes Balance Forward, New Charges, and Pending Automatic Payments)				247.70

CHECK DATE	DESCRIPTION OF SERVICE	PROCESSING DATE	# TRANSACTIONS	AMOUNT
NEW CHARGES				
06/30/22	Paychex Productivity	06/29/22	11	322.15
	Direct Deposit Premium Processing			60.00
	Client Discount		1	-150.20
	Delivery		1	15.75
	Total New Charges			247.70
Automatic Payment (Includes New Charges and applicable credits from Balance Forward above)				247.70

HR

Thank you for choosing Paychex.

CASH REQUIREMENTS

CASH REQUIRED FOR NEGOTIABLE CHECKS &/OR ELECTRONIC FUNDS TRANSFERS (EFT) FOR CHECK DATE 06/30/22: \$59,984.95

IMPORTANT COVID-19 INFORMATION: If you filed IRS Form 7200, please notify your Paychex representative to avoid owing a balance at the end of the quarter and ensure your Form 941 is accurate.

TRANSACTION SUMMARY

SUMMARY BY TRANSACTION TYPE -	TOTAL ELECTRONIC FUNDS TRANSFER (EFT)	59,984.95
	CASH REQUIRED FOR NEGOTIABLE CHECKS &/OR EFT	59,984.95
	TOTAL REMAINING DEDUCTIONS / WITHHOLDINGS / LIABILITIES	5,229.05
	CASH REQUIRED FOR CHECK DATE 06/30/22	65,214.00

TRANSACTION DETAIL

ELECTRONIC FUNDS TRANSFER - *Your financial institution will initiate transfer to Paychex at or after 12:01 A.M. on transaction date.*

<u>TRANS. DATE</u>	<u>BANK NAME</u>	<u>ACCOUNT NUMBER</u>	<u>PRODUCT</u>	<u>DESCRIPTION</u>	<u>BANK DRAFT AMOUNTS & OTHER TOTALS</u>
06/30/22	JPMORGAN CHASE BANK,	xxxxxxxxxxxxx506	Direct Deposit	Net Pay Allocations	36,202.66
06/30/22	JPMORGAN CHASE BANK,	xxxxxxxxxxxxx506	Taxpay®	Employee Withholdings	
				Social Security	3,748.71
				Medicare	876.72
				Fed Income Tax	10,326.38
				CA Income Tax	4,175.91
				Total Withholdings	19,127.72
				Employer Liabilities	
				Social Security	3,748.71
				Medicare	876.71
				Fed Unemploy	2.78
				CA Disability	5.09
				CA Unemploy	20.82
				CA Emp Train	0.46
				Total Liabilities	4,654.57
				EFT FOR 06/30/22	59,984.95
				TOTAL EFT	59,984.95

R

REMAINING DEDUCTIONS / WITHHOLDINGS / LIABILITIES - *Paychex does not remit these funds. You must ensure accurate and timely payment of applicable items.*

<u>TRANS. DATE</u>	<u>BANK NAME</u>	<u>ACCOUNT NUMBER</u>	<u>PRODUCT</u>	<u>DESCRIPTION</u>	<u>TOTAL</u>
06/30/22	Refer to your records for account Information		Payroll	Employee Deductions	
				401A Member Contribu	2,572.61
				Calpers 457B	300.00
				Calpers 457B Roth	2,260.00

CASH REQUIREMENTS

CASH REQUIRED FOR NEGOTIABLE CHECKS &/OR ELECTRONIC FUNDS TRANSFERS (EFT) FOR CHECK DATE 06/30/22: \$59,984.95

REMAINING DEDUCTIONS / WITHHOLDINGS / LIABILITIES (cont.) - *Paychex does not remit these funds. You must ensure accurate and timely payment of applicable items.*

<u>TRANS. DATE</u>	<u>BANK NAME</u>	<u>ACCOUNT NUMBER</u>	<u>PRODUCT</u>	<u>DESCRIPTION</u>	<u>TOTAL</u>
06/30/22	Refer to your records for account information		Payroll	Employee Deductions (cont.)	
				Med 125	96.44
				Total Deductions	5,229.05

TOTAL REMAINING DEDUCTIONS / WITHHOLDINGS / LIABILITIES					5,229.05

PAYCHEX WILL MAKE THESE TAX DEPOSIT(S) ON YOUR BEHALF - *This information serves as a record of payment.*

<u>DUE DATE</u>	<u>PRODUCT</u>	<u>DESCRIPTION</u>	
07/07/22	Taxpay®	FED IT PMT Group	19,577.23
07/07/22	Taxpay®	CA IT PMT Group	4,181.00

Sanitary Distr. No.5 of Marin Co.
Comparative Balance Sheet
As of June 30, 2022

	<u>Jun 30, 22</u>	<u>May 31, 22</u>	<u>\$ Change</u>
ASSETS			
Current Assets			
Checking/Savings			
Local Agency Investment Fund			
Belvedere			
Belvedere Operating	3,638,261.73	3,638,261.73	0.00
Belvedere Operating Reserve	516,923.05	516,923.05	0.00
Belvedere Capital & CIP Reserve	2,826,970.79	2,826,970.79	0.00
Belvedere PERS Retirement Trust	356,250.00	356,250.00	0.00
Belvedere Disaster Recovery Fnd	356,250.00	356,250.00	0.00
Total Belvedere	<u>7,694,655.57</u>	<u>7,694,655.57</u>	<u>0.00</u>
Tiburon			
Tiburon Operating	1,508,375.61	1,833,375.61	-325,000.00
Tiburon Operating Reserve	683,930.00	683,930.00	0.00
Tiburon Capital & CIP Reserve	4,511,350.96	4,511,350.96	0.00
Tiburon PERS Retirement Trust	643,750.00	643,750.00	0.00
Tiburon Disaster Recovery Fund	643,750.00	643,750.00	0.00
Total Tiburon	<u>7,991,156.57</u>	<u>8,316,156.57</u>	<u>-325,000.00</u>
Total Local Agency Investment Fund	<u>15,685,812.14</u>	<u>16,010,812.14</u>	<u>-325,000.00</u>
JP Morgan Chase - Primary 7399	51,743.03	47,845.64	3,897.39
JP Morgan Chase - Payroll 7506	61,896.80	36,985.39	24,911.41
JP Morgan Chase - Transfer 7522	630,868.25	454,266.27	176,601.98
Total Checking/Savings	<u>16,430,320.22</u>	<u>16,549,909.44</u>	<u>-119,589.22</u>
Accounts Receivable			
Accounts Receivable	22,355.66	22,355.66	0.00
Total Accounts Receivable	<u>22,355.66</u>	<u>22,355.66</u>	<u>0.00</u>
Other Current Assets			
Prepaid Expense	48,532.70	48,532.70	0.00
Petty Cash	881.92	881.92	0.00
Total Other Current Assets	<u>49,414.62</u>	<u>49,414.62</u>	<u>0.00</u>
Total Current Assets	<u>16,502,090.50</u>	<u>16,621,679.72</u>	<u>-119,589.22</u>
Fixed Assets	<u>20,408,185.19</u>	<u>20,408,185.19</u>	<u>0.00</u>
TOTAL ASSETS	<u>36,910,275.69</u>	<u>37,029,864.91</u>	<u>-119,589.22</u>
LIABILITIES & EQUITY	36,910,275.69	37,029,864.91	-119,589.22

Sanitary Distr. No.5 of Marin Co.
Annual Budget vs Actual Expenses
 July 2021 through June 2022

	Jul '21 - Jun 22	Budget	\$ Over Budget	% of Bud...
Ordinary Income/Expense				
Income				
5000 · Property Taxes				
5001.2 · TEETER	904,885.37	825,000.00	79,885.37	109.7%
5002 · UNSEC	16,343.29	15,000.00	1,343.29	109.0%
5003 · PUNS / PRIOR UNSECURED	953.72	500.00	453.72	190.7%
5004 · REDEMPTION / RDMPT	409.51	0.00	409.51	100.0%
5006 · SPLU	659.77	300.00	359.77	219.9%
5041 · SUPSEC	29,326.52	12,000.00	17,326.52	244.4%
5043 · SECU	346.98	0.00	346.98	100.0%
5046 · Excess ERAF	476,384.31	300,000.00	176,384.31	158.8%
5280 · HOPTR	3,675.33	3,333.00	342.33	110.3%
5483 · Other tax	8,647.08	0.00	8,647.08	100.0%
Total 5000 · Property Taxes	1,441,631.88	1,156,133.00	285,498.88	124.7%
5007 · Sewer Service Charge				
5007.1 · Sewer Service - Tiburon Ops	2,590,174.93	2,283,000.00	307,174.93	113.5%
5007.5 · Sewer Service - Tiburon Cap	0.00	12,000.00	-12,000.00	0.0%
5007.2 · Sewer Service-Belv Ops	1,447,173.08	1,300,000.00	147,173.08	111.3%
5007.3 · Sewer Service-Belv Cap	900,456.97	866,300.00	34,156.97	103.9%
5007.4 · Other User Fees	0.00	38,700.00	-38,700.00	0.0%
Total 5007 · Sewer Service Charge	4,937,804.98	4,500,000.00	437,804.98	109.7%
5201 · Interest				
5201.1 · Interest County of Marin	119.96			
5201.2 · Interest LAIF	27,067.36	100,000.00	-72,932.64	27.1%
Total 5201 · Interest	27,187.32	100,000.00	-72,812.68	27.2%
5900.3 · Connection Fees				
5900.30 · Connection Permit Fees	12,550.00	10,000.00	2,550.00	125.5%
5900.31 · Collection	210,950.44	100,000.00	110,950.44	211.0%
5900.34 · Treatment	242,970.96	100,000.00	142,970.96	243.0%
Total 5900.3 · Connection Fees	466,471.40	210,000.00	256,471.40	222.1%
5900.4 · Inspection Permit Fees	11,850.00	17,000.00	-5,150.00	69.7%
5900.5 · SASM Expense Reimb.	78,033.03	100,000.00	-21,966.97	78.0%
5900.9 · Other Income	0.00	100.00	-100.00	0.0%
5900.10 · Paradise Sewer Line Ext. Fees	0.00	14,040.00	-14,040.00	0.0%
Total Income	6,962,978.61	6,097,273.00	865,705.61	114.2%
Gross Profit	6,962,978.61	6,097,273.00	865,705.61	114.2%
Expense				
6000 · Administrative Expenses				
6001 · Advertising	1,250.81	1,000.00	250.81	125.1%
6008 · Audit & Accounting	29,153.45	40,000.00	-10,846.55	72.9%
6017 · Consulting Fees	31,118.93	150,000.00	-118,881.07	20.7%
6018 · Travel & Meetings				
6018.1 · Meetings & Travel	11,638.86	6,000.00	5,638.86	194.0%
6018.2 · Standby Mileage Expense Reimb	7,991.73	9,000.00	-1,008.27	88.8%
Total 6018 · Travel & Meetings	19,630.59	15,000.00	4,630.59	130.9%
6020 · Continuing Education	3,266.83	10,000.00	-6,733.17	32.7%
6021 · County Fees	16,241.34	16,590.00	-348.66	97.9%
6024 · Director Fees	3,300.00	9,000.00	-5,700.00	36.7%
6025 · Dues & Subscriptions	19,656.62	31,000.00	-11,343.38	63.4%
6026 · Elections	0.00	0.00	0.00	0.0%
6033 · Insurance Property & Liability				
6033.1 · PLP Public Entity Phys Damage	0.00	25,000.00	-25,000.00	0.0%
6033.2 · General Liability	86,246.71	45,000.00	41,246.71	191.7%
6033.3 · Physical Property Damage - Auto	7,567.96	4,000.00	3,567.96	189.2%
Total 6033 · Insurance Property & Liability	93,814.67	74,000.00	19,814.67	126.8%
6039 · Legal	20,316.65	50,000.00	-29,683.35	40.6%
6047 · Office Supplies	6,018.15	10,000.00	-3,981.85	60.2%
6056 · Postage	896.03	1,000.00	-103.97	89.6%

Sanitary Distr. No.5 of Marin Co.
Annual Budget vs Actual Expenses
 July 2021 through June 2022

	Jul '21 - Jun 22	Budget	\$ Over Budget	% of Bud...
6059 · Pollution Prevention/Public Edu	2,274.42	5,000.00	-2,725.58	45.5%
6065 · Miscellaneous Expense	500.00			
Total 6000 · Administrative Expenses	247,438.49	412,590.00	-165,151.51	60.0%
7000 · Ops & Maintenance Expenses				
7010 · Pumps & Lines Maintenance				
7011 · Pumps & Lines Maintenance	234,192.18	75,000.00	159,192.18	312.3%
7013 · Emergency Line Repair	34,100.49	50,000.00	-15,899.51	68.2%
Total 7010 · Pumps & Lines Maintenance	268,292.67	125,000.00	143,292.67	214.6%
7020 · Main Plant Maintenance				
7021 · Plant Maintenance Supplies	48,473.58	25,000.00	23,473.58	193.9%
7022 · Plant Maint. Parts & Service	276,214.42	130,000.00	146,214.42	212.5%
7023 · Janitorial Supplies & Service	6,676.05	9,000.00	-2,323.95	74.2%
7024 · Main Plant Chemicals	148,500.29	111,000.00	37,500.29	133.8%
7025 · Lab Supplies & Chemicals	19,745.59	20,000.00	-254.41	98.7%
7027 · Electrical & Instrument	24,416.05	15,000.00	9,416.05	162.8%
7028 · Grounds Maintenance	7,711.89	6,000.00	1,711.89	128.5%
7029 · Main Plant Sludge Disposal	44,699.14	41,000.00	3,699.14	109.0%
7030 · Main Plant Outfall	5,925.00	6,500.00	-575.00	91.2%
Total 7020 · Main Plant Maintenance	582,362.01	363,500.00	218,862.01	160.2%
7040 · Paradise Cove Plant Maint				
7041 · Paradise Parts & Service	14,028.35	10,000.00	4,028.35	140.3%
7042 · Paradise Supplies & Chemicals	9,303.31	5,000.00	4,303.31	186.1%
7043 · Paradise Sludge Disposal	4,110.22	0.00	4,110.22	100.0%
Total 7040 · Paradise Cove Plant Maint	27,441.88	15,000.00	12,441.88	182.9%
7050 · Monitoring				
7051 · Main Plant Lab Monitoring	46,739.43	45,000.00	1,739.43	103.9%
7052 · Paradise Cove Monitoring	12,432.50	15,000.00	-2,567.50	82.9%
7053 · Chronic Toxicity	4,797.00			
Total 7050 · Monitoring	63,968.93	60,000.00	3,968.93	106.6%
7060 · Permits/Fees				
7061 · Main Plant NPDES Renewal	852.50	0.00	852.50	100.0%
7062 · Permits/Fees - General	46,354.71	50,000.00	-3,645.29	92.7%
7063 · Paradise Cove Permits/Fees	4,613.07	9,000.00	-4,386.93	51.3%
7064 · Paradise Cove NPDES Renewal	0.00			
Total 7060 · Permits/Fees	51,820.28	59,000.00	-7,179.72	87.8%
7070 · Truck Maintenance				
7071 · Fuel	10,548.47	15,000.00	-4,451.53	70.3%
7072 · Maintenance	9,887.44	10,000.00	-112.56	98.9%
Total 7070 · Truck Maintenance	20,435.91	25,000.00	-4,564.09	81.7%
Total 7000 · Ops & Maintenance Expenses	1,014,321.68	647,500.00	366,821.68	156.7%
8000 · Salaries and Benefits Expenses				
8001 · Salaries	1,235,279.69	1,353,783.00	-118,503.31	91.2%
8003 · Overtime	228,381.00	100,000.00	128,381.00	228.4%
8004 · Standby Pay	81,168.95	76,043.00	5,125.95	106.7%
8005 · Employee Incentives	55,460.04	70,000.00	-14,539.96	79.2%
8006 · Vacation Buyout	43,667.05	30,000.00	13,667.05	145.6%
8013 · Payroll Taxes	110,232.28	101,047.00	9,185.28	109.1%
8015 · Payroll/Bank Fees	6,907.69	6,250.00	657.69	110.5%
8016 · Car Allowance	6,000.00	6,000.00	0.00	100.0%
8019 · PERS Retirement				
8019.05 · PERS Retirement	129,412.61	304,705.00	-175,292.39	42.5%
8019.06 · PERS Retirement - RBP	0.00	350.00	-350.00	0.0%
8019.08 · PERS Retirement - CalPERS UAL	0.00	20,000.00	-20,000.00	0.0%
8019 · PERS Retirement - Other	-120.39			
Total 8019 · PERS Retirement	129,292.22	325,055.00	-195,762.78	39.8%
8020 · Employee Health				

Sanitary Distr. No.5 of Marin Co.
Annual Budget vs Actual Expenses
 July 2021 through June 2022

	Jul '21 - Jun 22	Budget	\$ Over Budget	% of Bud...
8020.05 · Employee Health	213,061.30	223,418.00	-10,356.70	95.4%
8021 · Employee Health Deductions	-2,357.16			
Total 8020 · Employee Health	210,704.14	223,418.00	-12,713.86	94.3%
8022 · Retiree Health				
8022.05 · Retiree Health	112,389.59	77,127.00	35,262.59	145.7%
8022.06 · OPEB Adjustment	0.00	0.00	0.00	0.0%
8022.10 · CERBT/OPEB Annual Arc Contribtn	268,400.00	118,400.00	150,000.00	226.7%
Total 8022 · Retiree Health	380,789.59	195,527.00	185,262.59	194.8%
8023 · Workers Comp Insurance	39,211.30	55,000.00	-15,788.70	71.3%
Total 8000 · Salaries and Benefits Expenses	2,527,093.95	2,542,123.00	-15,029.05	99.4%
8500 · Other Operating Expenses				
8510 · Data/Alarms/IT Supp & Licensing	84,568.73	100,000.00	-15,431.27	84.6%
8515 · Safety	39,237.24	40,000.00	-762.76	98.1%
8520 · Personal Protection/Safety Wear	7,692.54	15,000.00	-7,307.46	51.3%
8530 · Telephone				
8531 · Main Plant Telephones	6,941.68	11,000.00	-4,058.32	63.1%
8532 · Paradise Cove Telephones	4,652.65	4,000.00	652.65	116.3%
8533 · Pumps & Lines Telephones	6,203.46	7,000.00	-796.54	88.6%
Total 8530 · Telephone	17,797.79	22,000.00	-4,202.21	80.9%
8540 · Utilities				
8541 · Water	7,783.38	8,000.00	-216.62	97.3%
8542 · Main Plant Utilities	174,900.59	200,000.00	-25,099.41	87.5%
8543 · Paradise Cove Utilities	20,938.30	18,000.00	2,938.30	116.3%
8544 · Pump Station Utilities	41,144.61	45,000.00	-3,855.39	91.4%
Total 8540 · Utilities	244,766.88	271,000.00	-26,233.12	90.3%
Total 8500 · Other Operating Expenses	394,063.18	448,000.00	-53,936.82	88.0%
Total Expense	4,182,917.30	4,050,213.00	132,704.30	103.3%
Net Ordinary Income	2,780,061.31	2,047,060.00	733,001.31	135.8%
Other Income/Expense				
Other Expense				
9100 · Capital Expenditures				
9200 · Main Plant Equipment Capital				
9202 · M.P. Drainage				
9202.1 · Infl Smple Rm+Secondary Drains	0.00	75,000.00	-75,000.00	0.0%
9202.2 · Load-out & Filtering	25,986.51	30,000.00	-4,013.49	86.6%
Total 9202 · M.P. Drainage	25,986.51	105,000.00	-79,013.49	24.7%
9203 · M.P. Flare Rehabilitation	0.00	30,000.00	-30,000.00	0.0%
9204 · M.P. Boiler Replacement				
9204.1 · M.P. Boiler Exhaust Piping	0.00	0.00	0.00	0.0%
9204 · M.P. Boiler Replacement - Other	37,665.12	0.00	37,665.12	100.0%
Total 9204 · M.P. Boiler Replacement	37,665.12	0.00	37,665.12	100.0%
9206 · Infl Dry Weather Pump Rplcmnt	40,927.16	40,000.00	927.16	102.3%
9208 · M.P. Chemical Feed Pump Rplcmnt	34,830.64	0.00	34,830.64	100.0%
9209 · ScrewPress PolyBlend Redundancy	-722.34	35,000.00	-35,722.34	-2.1%
9212 · M.P. Headworks Grinder Rplcmnt				
9212.1 · Explosion Proof Electric Hoist	0.00	10,000.00	-10,000.00	0.0%
9212 · M.P. Headworks Grinder Rplcmnt - Other	0.00	25,000.00	-25,000.00	0.0%
Total 9212 · M.P. Headworks Grinder Rplcmnt	0.00	35,000.00	-35,000.00	0.0%
9217 · SD5 Shop Rplcmnt /Ops Control	1,836.69	0.00	1,836.69	100.0%
9218 · Generator Control Panel	1,435.44	0.00	1,435.44	100.0%
9219 · C12 Flash Mixer	8,582.00	15,000.00	-6,418.00	57.2%
Total 9200 · Main Plant Equipment Capital	150,541.22	260,000.00	-109,458.78	57.9%
9300 · Pumps & Lines Capital				

Sanitary Distr. No.5 of Marin Co.
Annual Budget vs Actual Expenses
 July 2021 through June 2022

	Jul '21 - Jun 22	Budget	\$ Over Budget	% of Bud...
9301 · Tiburon Sewer Line Rehab Prog	0.00	1,000,000.00	-1,000,000.00	0.0%
9302 · PS Control Panel Upgrades	0.00	0.00	0.00	0.0%
9304 · Belvedere Sewer Line Rehab Prog	0.00	100,000.00	-100,000.00	0.0%
9305 · Valve/Wet Well Replacements				
9305.2 · Tiburon Wet Well Rehab	0.00	50,000.00	-50,000.00	0.0%
9305.1 · Belvedere Wet Well Rehab	0.00	75,000.00	-75,000.00	0.0%
Total 9305 · Valve/Wet Well Replacements	0.00	125,000.00	-125,000.00	0.0%
9306 · PS Pump & Valve Replacements	39,657.94	50,000.00	-10,342.06	79.3%
9307 · PS Generator Replacement	3,751.00	100,000.00	-96,249.00	3.8%
9310 · BPS Communication Project	6,672.73	0.00	6,672.73	100.0%
9313 · Manholes/Rodholes	32,902.24	75,000.00	-42,097.76	43.9%
9314 · Portable Emergency Generators	0.00			
9315 · TPS Communication Project	946.43	0.00	946.43	100.0%
9227.8 · Rodder/Vactor Truck	988.13			
Total 9300 · Pumps & Lines Capital	84,918.47	1,450,000.00	-1,365,081.53	5.9%
9400 · Paradise Cove Capital				
9403 · P.C. Communication Upgrades				
9403.1 · Cellular	27,814.43	20,000.00	7,814.43	139.1%
9403 · P.C. Communication Upgrades - Other	9,240.81			
Total 9403 · P.C. Communication Upgrades	37,055.24	20,000.00	17,055.24	185.3%
9404 · P.C. Infl WWI Access Replcmnt	0.00			
9415 · P.C. Paint @ Treatment Plant	0.00			
9416 · P.C. Equipment	0.00			
Total 9400 · Paradise Cove Capital	37,055.24	20,000.00	17,055.24	185.3%
9500 · Undesignated Capital				
9510 · Undesignated Cap - M.P.	26,558.00	25,000.00	1,558.00	106.2%
9520 · Undesignated Cap - P.C. Plant	0.00	10,000.00	-10,000.00	0.0%
9530 · Undesignated Cap - P & L	136,861.85	50,000.00	86,861.85	273.7%
Total 9500 · Undesignated Capital	163,419.85	85,000.00	78,419.85	192.3%
Total 9100 · Capital Expenditures	435,934.78	1,815,000.00	-1,379,065.22	24.0%
9700 · Debt Service				
9701 · MPR Bond REFI - Principal	580,000.00	580,000.00	0.00	100.0%
9702 · MPR Bond REFI - Interest	172,359.99	172,360.00	-0.01	100.0%
9703 · MPR Bond Refi - Admin Fees	0.00	950.00	-950.00	0.0%
Total 9700 · Debt Service	752,359.99	753,310.00	-950.01	99.9%
Total Other Expense	1,188,294.77	2,568,310.00	-1,380,015.23	46.3%
Net Other Income	-1,188,294.77	-2,568,310.00	1,380,015.23	46.3%
Net Income	<u>1,591,766.54</u>	<u>-521,250.00</u>	<u>2,113,016.54</u>	<u>-305.4%</u>

Sanitary Distr. No.5 of Marin Co.
Zone Report
June 2022

	Paradise Co... (Tiburon)	Tiburon - Oth... (Tiburon)	Total Tiburon	Belvedere	TOTAL
Ordinary Income/Expense					
Income					
5000 · Property Taxes					
5001.2 · TEETER	1,830.53	38,224.76	40,055.29	0.00	40,055.29
5004 · REDEMPTION / RDMPT	0.65	13.51	14.16	0.00	14.16
5041 · SUPSEC	66.36	1,385.77	1,452.13	0.00	1,452.13
5280 · HOPTR	25.19	526.11	551.30	0.00	551.30
Total 5000 · Property Taxes	1,922.73	40,150.15	42,072.88	0.00	42,072.88
5007 · Sewer Service Charge					
5007.1 · Sewer Service - Tiburon Ops	4,948.29	103,329.32	108,277.61	0.00	108,277.61
5007.5 · Sewer Service - Tiburon Cap	0.00	0.00	0.00	0.00	0.00
5007.2 · Sewer Service-Belv Ops	0.00	0.00	0.00	62,415.47	62,415.47
5007.3 · Sewer Service-Belv Cap	0.00	0.00	0.00	38,836.02	38,836.02
Total 5007 · Sewer Service Charge	4,948.29	103,329.32	108,277.61	101,251.49	209,529.10
5900.3 · Connection Fees					
5900.30 · Connection Permit Fees	0.00	100.00	100.00	200.00	300.00
5900.31 · Collection	0.00	3,396.00	3,396.00	0.00	3,396.00
5900.34 · Treatment	0.00	4,280.00	4,280.00	0.00	4,280.00
Total 5900.3 · Connection Fees	0.00	7,776.00	7,776.00	200.00	7,976.00
5900.4 · Inspection Permit Fees					
	0.00	400.00	400.00	200.00	600.00
Total Income	6,871.02	151,655.47	158,526.49	101,651.49	260,177.98
Gross Profit	6,871.02	151,655.47	158,526.49	101,651.49	260,177.98
Expense					
6000 · Administrative Expenses					
6001 · Advertising	2.30	48.17	50.47	28.34	78.81
6008 · Audit & Accounting	0.00	0.00	0.00	0.00	0.00
6017 · Consulting Fees	260.61	5,454.96	5,715.57	3,209.43	8,925.00
6018 · Travel & Meetings					
6018.1 · Meetings & Travel	20.57	430.40	450.97	253.22	704.19
6018.2 · Standby Mileage Expense Reimb	51.23	269.38	320.61	321.62	642.23
Total 6018 · Travel & Meetings	71.80	699.78	771.58	574.84	1,346.42
6020 · Continuing Education	3.45	72.12	75.57	42.43	118.00
6025 · Dues & Subscriptions	0.00	0.00	0.00	0.00	0.00
6047 · Office Supplies	5.92	124.16	130.08	73.05	203.13
6056 · Postage	5.55	148.32	153.87	68.38	222.25
6065 · Miscellaneous Expense	0.00	0.00	0.00	0.00	0.00
Total 6000 · Administrative Expenses	349.63	6,547.51	6,897.14	3,996.47	10,893.61
7000 · Ops & Maintenance Expenses					
7010 · Pumps & Lines Maintenance					
7011 · Pumps & Lines Maintenance	12,122.73	36,754.47	48,877.20	21,949.58	70,826.78
Total 7010 · Pumps & Lines Maintenance	12,122.73	36,754.47	48,877.20	21,949.58	70,826.78
7020 · Main Plant Maintenance					
7021 · Plant Maintenance Supplies	0.00	10,227.32	10,227.32	6,019.34	16,246.66
7022 · Plant Maint. Parts & Service	8,707.50	17,834.27	26,541.77	15,621.50	42,163.27
7023 · Janitorial Supplies & Service	0.00	270.94	270.94	159.45	430.39
7024 · Main Plant Chemicals	0.00	7,305.02	7,305.02	4,298.58	11,603.60
7025 · Lab Supplies & Chemicals	0.00	1,501.47	1,501.47	883.72	2,385.19
7027 · Electrical & Instrument	0.00	486.09	486.09	286.09	772.18
7028 · Grounds Maintenance	0.00	3,178.97	3,178.97	1,871.03	5,050.00
7029 · Main Plant Sludge Disposal	0.00	5,982.33	5,982.33	3,520.98	9,503.31
Total 7020 · Main Plant Maintenance	8,707.50	46,786.41	55,493.91	32,660.69	88,154.60

Sanitary Distr. No.5 of Marin Co.
Zone Report
June 2022

07/13/22

	Paradise Co... (Tiburon)	Tiburon - Oth... (Tiburon)	Total Tiburon	Belvedere	TOTAL
7040 · Paradise Cove Plant Maint					
7041 · Paradise Parts & Service	1,006.44	0.00	1,006.44	0.00	1,006.44
7042 · Paradise Supplies & Chemicals	3,060.95	0.00	3,060.95	0.00	3,060.95
7043 · Paradise Sludge Disposal	1,060.00	0.00	1,060.00	0.00	1,060.00
Total 7040 · Paradise Cove Plant Maint	5,127.39	0.00	5,127.39	0.00	5,127.39
7050 · Monitoring					
7051 · Main Plant Lab Monitoring	0.00	2,004.67	2,004.67	1,179.88	3,184.55
7052 · Paradise Cove Monitoring	291.65	0.00	291.65	0.00	291.65
7053 · Chronic Toxicity	2,267.50	0.00	2,267.50	0.00	2,267.50
Total 7050 · Monitoring	2,559.15	2,004.67	4,563.82	1,179.88	5,743.70
7070 · Truck Maintenance					
7071 · Fuel	0.00	0.00	0.00	0.00	0.00
7072 · Maintenance	33.42	699.43	732.85	411.52	1,144.37
Total 7070 · Truck Maintenance	33.42	699.43	732.85	411.52	1,144.37
Total 7000 · Ops & Maintenance Expenses	28,550.19	86,244.98	114,795.17	56,201.67	170,996.84
8000 · Salaries and Benefits Expenses					
8001 · Salaries	0.00	96,504.30	96,504.30	0.00	96,504.30
8003 · Overtime	0.00	18,782.46	18,782.46	0.00	18,782.46
8004 · Standby Pay	0.00	6,671.82	6,671.82	0.00	6,671.82
8005 · Employee Incentives	29.20	611.20	640.40	359.60	1,000.00
8007 · Voluntary Deductions	0.00	0.00	0.00	0.00	0.00
8008 · Deferred Comp 457	0.00	-1,367.45	-1,367.45	0.00	-1,367.45
8013 · Payroll Taxes	0.00	9,344.23	9,344.23	0.00	9,344.23
8015 · Payroll/Bank Fees	0.00	491.33	491.33	0.00	491.33
8019 · PERS Retirement					
8019.05 · PERS Retirement	536.36	6,081.55	6,617.91	6,605.28	13,223.19
8019 · PERS Retirement - Other	0.00	0.00	0.00	0.00	0.00
Total 8019 · PERS Retirement	536.36	6,081.55	6,617.91	6,605.28	13,223.19
8020 · Employee Health					
8020.05 · Employee Health	481.32	10,074.74	10,556.06	5,927.50	16,483.56
8021 · Employee Health Deductions	0.00	-192.88	-192.88	0.00	-192.88
Total 8020 · Employee Health	481.32	9,881.86	10,363.18	5,927.50	16,290.68
8022 · Retiree Health					
8022.05 · Retiree Health	39.68	830.70	870.38	488.74	1,359.12
Total 8022 · Retiree Health	39.68	830.70	870.38	488.74	1,359.12
Total 8000 · Salaries and Benefits Expenses	1,086.56	147,832.00	148,918.56	13,381.12	162,299.68
8500 · Other Operating Expenses					
8510 · Data/Alarms/IT Supp & Licensing	178.19	5,844.94	6,023.13	3,439.31	9,462.44
8515 · Safety	48.48	1,340.70	1,389.18	788.87	2,178.05
8520 · Personal Protection/Safety Wear	5.19	108.70	113.89	63.95	177.84
8530 · Telephone					
8531 · Main Plant Telephones	0.00	207.02	207.02	121.80	328.82
8532 · Paradise Cove Telephones	528.03	0.00	528.03	0.00	528.03
8533 · Pumps & Lines Telephones	43.27	314.00	357.27	35.00	392.27
Total 8530 · Telephone	571.30	521.02	1,092.32	156.80	1,249.12

**Sanitary Distr. No.5 of Marin Co.
Zone Report
June 2022**

07/13/22

	Paradise Co... (Tiburon)	Tiburon - Oth... (Tiburon)	Total Tiburon	Belvedere	TOTAL
8540 · Utilities					
8542 · Main Plant Utilities	0.00	9,368.65	9,368.65	5,514.04	14,882.69
8543 · Paradise Cove Utilities	1,797.70	0.00	1,797.70	0.00	1,797.70
8544 · Pump Station Utilities	244.27	1,646.76	1,891.03	1,171.19	3,062.22
Total 8540 · Utilities	<u>2,041.97</u>	<u>11,015.41</u>	<u>13,057.38</u>	<u>6,685.23</u>	<u>19,742.61</u>
Total 8500 · Other Operating Expenses	<u>2,845.13</u>	<u>18,830.77</u>	<u>21,675.90</u>	<u>11,134.16</u>	<u>32,810.06</u>
Total Expense	<u>32,831.51</u>	<u>259,455.26</u>	<u>292,286.77</u>	<u>84,713.42</u>	<u>377,000.19</u>
Net Ordinary Income	-25,960.49	-107,799.79	-133,760.28	16,938.07	-116,822.21
Other Income/Expense					
Other Expense					
9100 · Capital Expenditures					
9200 · Main Plant Equipment Capital					
9204 · M.P. Boiler Replacement	0.00	0.00	0.00	0.00	0.00
9218 · Generator Control Panel	0.00	0.00	0.00	0.00	0.00
Total 9200 · Main Plant Equipment Capital	<u>0.00</u>	<u>0.00</u>	<u>0.00</u>	<u>0.00</u>	<u>0.00</u>
9300 · Pumps & Lines Capital					
9306 · PS Pump & Valve Replacements	0.00	1,778.88	1,778.88	0.00	1,778.88
9314 · Portable Emergency Generators	0.00	0.00	0.00	0.00	0.00
9227.8 · Rodder/Vactor Truck	28.85	603.95	632.80	355.33	988.13
Total 9300 · Pumps & Lines Capital	<u>28.85</u>	<u>2,382.83</u>	<u>2,411.68</u>	<u>355.33</u>	<u>2,767.01</u>
Total 9100 · Capital Expenditures	<u>28.85</u>	<u>2,382.83</u>	<u>2,411.68</u>	<u>355.33</u>	<u>2,767.01</u>
Total Other Expense	<u>28.85</u>	<u>2,382.83</u>	<u>2,411.68</u>	<u>355.33</u>	<u>2,767.01</u>
Net Other Income	-28.85	-2,382.83	-2,411.68	-355.33	-2,767.01
Net Income	<u><u>-25,989.34</u></u>	<u><u>-110,182.62</u></u>	<u><u>-136,171.96</u></u>	<u><u>16,582.74</u></u>	<u><u>-119,589.22</u></u>

Sanitary Distr. No.5 of Marin Co.

Monthly O.T. Report

June 2022

07/13/22

Accrual Basis

Type	Date	Num	Name	Memo	Amount	Balance
Balf, Abigail						
Check	06/15/22	160	Balf, Abigail	4.00 Hrs. O.T. @ 1.5x	219.00	219.00
Check	06/15/22	160	Balf, Abigail	2.00 Hrs. O.T. @ 2.0x	146.00	365.00
Check	06/30/22	170	Balf, Abigail	3.00 Hrs. O.T. @ 1.5x	164.24	529.24
Check	06/30/22	170	Balf, Abigail	5.00 Hrs. O.T. @ 2.0x	364.98	894.22
Total Balf, Abigail					894.22	894.22
Bilsborough, Chad						
Check	06/15/22	161	Bilsborough, Chad	53.00 Hrs O.T. @ 1.5x	3,703.11	3,703.11
Check	06/15/22	161	Bilsborough, Chad	07.00 Hrs. O.T. @ 2.0x	652.12	4,355.23
Check	06/30/22	171	Bilsborough, Chad	59.00 Hrs O.T. @ 1.5x	4,122.33	8,477.56
Check	06/30/22	171	Bilsborough, Chad	07.00 Hrs. O.T. @ 2.0x	652.12	9,129.68
Total Bilsborough, Chad					9,129.68	9,129.68
Cottrell, Rulon						
Check	06/15/22	163	Cottrell, Rulon	11.00 Hrs. O.T. @ 1.5x	1,081.41	1,081.41
Check	06/30/22	173	Cottrell, Rulon	09.00 Hrs. O.T. @ 1.5x	884.79	1,966.20
Total Cottrell, Rulon					1,966.20	1,966.20
Dohrmann, Robin						
Check	06/15/22	164	Dohrmann, Robin	2.50 Hrs. O.T. @ 1.5x	222.94	222.94
Check	06/30/22	174	Dohrmann, Robin	6.25 Hrs. O.T. @ 1.5x	557.34	780.28
Total Dohrmann, Robin					780.28	780.28
Rosser, John						
Check	06/15/22	166	Rosser, John	42.00 Hrs. @ 1.5x	3,396.96	3,396.96
Check	06/15/22	166	Rosser, John	01.00 Hrs. O.T. @ 2.0x	107.84	3,504.80
Check	06/30/22	177	Rosser, John	15.00 Hrs. @ 1.5x	1,213.20	4,718.00
Check	06/30/22	177	Rosser, John	06.50 Hrs. @ 2.0x	700.96	5,418.96
Total Rosser, John					5,418.96	5,418.96
Triola, Joseph						
Check	06/15/22	168	Triola, Joseph	2.00 Hrs. O.T. @ 1.5x	161.76	161.76
Check	06/15/22	168	Triola, Joseph	1.00 Hrs. O.T. @ 2.0x	107.84	269.60
Check	06/30/22	179	Triola, Joseph	04.00 Hrs. O.T. @ 1.5x	323.52	593.12
Total Triola, Joseph					593.12	593.12
TOTAL					18,782.46	18,782.46

Sanitary District No. 5 of Marin County



District Management Report June 2022

Contents:

- Transmittal Memo
- Financial/Budgetary
- HR & Personnel
- Business Administration
- Collection System Performance
- Treatment Plant Performance – Paradise Cove
- Treatment Plant Performance – Main Plant
- Pollution Prevention Activities
- Continuing Education & Safety Training
- Capital Improvement Projects

Transmittal Memo

Date: July 21, 2022
To: Board of Directors
From: Tony Rubio, District Manager
Subject: Management Report for June 2022

Fiscal Status

Period Covered: July 1, 2021 –June 30, 2022
Percent of Fiscal Year: 100%
Percent of Budgeted Income to Date: 114.2%
Percent of Budgeted Expenditures to Date: 103.3% (operating only)

Personnel

Separations: None
New Hires: None
Promotions: None
Recruitment Activities: 1

Regulatory Compliance

MP Collection System WDR Compliance: Full Compliance with all regulations
PC Collection System WDR Compliance: Full Compliance with all regulations
MP NPDES Permit Compliance: Full Compliance with all regulations
PC NPDES Permit Compliance: Full Compliance with all regulations
BAAQMD Compliance: Full Compliance with all regulations
Significant Comments: None

Summary of Operational Highlights are on the following pages.

Significant Events for the Month of June 2022 Include:

Financial/Budgetary/Business Administration

- Board and committee meetings will continue to be held virtually in compliance with AB361 and status of need will be reviewed every month.
- Re-organization of office desks – making room for Admin Assistant

HR and Personnel

- Successor MOU completed- preparing for implementation
- Unrepresented employee benefits plan updates completed
- Recruitment of Operator underway

Continuing Education and Safety Training.

- Work with DKF solutions on District safety program updates on going Fall Protection and traffic control policies under review.

Collection System Performance

Main Plant Tiburon/Belvedere:

- Submitted No Spill Report for the month of May to RWQCB on CIWQS
- Soleflux Pilot project in the collection system completed. 5-20 gallons per day of product required during dry weather conditions and variation in use is tied to weather (heat)

Paradise Cove:

- Submitted No Spill report for month of May to RWQCB on CIWQS

Treatment Plant Performance

Paradise Cove:

- Conduits being installed for top of the plant lighting project

Main Plant:

- Submitted May 2022 Monthly SMR and DMR to the RWQCB on CIWQS

Pollution Prevention Activities

- Remote meetings with P2 Group

Capital Improvement Projects

- 2022 Sewer Rehab Bids Received- Agenda Item
- Plant drains rehabilitation work completed
- Review of 2022 CIP projects with staff for creating calendar for implementation
- Digester Rehab Kick off meeting scheduled for July 20 (received valving)

Glossary of Terms

- **B.O.D. (Biochemical Oxygen Demand):** Measurement of the effluent's capacity to consume dissolved oxygen to stabilize all remaining organic matter. The permit limits for our effluent for discharge into San Francisco bay require that we remove 85% influent B.O.D. and meet a weekly average of less than 45mg/l and a monthly average of less than 30 mg/l B.O.D.
- **TSS (Total Suspended Solids):** Measurement of suspended solids in the effluent. Our permit requires that we remove at least 85% of the influent TSS and that the effluent limit is less than 45 mg/l as a weekly average and less than 30 mg/l as a monthly average.
- **Chlorine Residual:** The plant effluent is disinfected with hypochlorite (chlorine "bleach") and then the residual chlorine is neutralized with sodium bisulfite to protect the bay. The effluent chlorine residual limit is 0.0 mg/l which we monitor continuously.
- **pH:** pH is a measurement of acidity with pH 7.0 being neutral and higher pH values being basic and lower pH values being acidic. Our permit effluent pH must stay within the range of 6.0-9.0, which we monitor continuously.
- **Coliform:** Coliform bacteria are the indicator organism for determination of the efficiency of the disinfection process. The lab culture samples of our effluent and the presence of coliform is an indication that pathogenic organisms may be present. This is reported as MPN/100 (number of coliform bacteria in 100 milliliters sample).
- **Flow Through Bioassay:** A 96 hour test in which we test the toxicity of our effluent to tiny fish (sticklebacks) in a flow through tank to determine the survivability under continuous exposure to our effluent. Our permit requires that we maintain a 90th percentile survival of at least 70% and an 11 sample median survival of at least 90%. In layman's terms, this means that out of the last 11 samples only one bioassay may fall below 70% survival and the middle value when all 11 samples are placed in numerical order must be at least 90%.
- **Metals Analysis:** Our permit requires that we analyze our effluent for many different metals on a monthly basis. We have permit limits for some metals. The metals are stated as a daily max and a monthly average limit. The daily max limit is the number we cannot exceed on any sample and the monthly average applies to all samples collected in any month. (although usually we are only required to take one).
- **F.O.G. (Fats, oils and grease):** Quarterly we are required to monitor our effluent for Fats, Oils and Grease.

Glossary of terms continued...

- **Headworks:** The point where all raw wastewater enters the treatment plant. In this building wastewater goes through 3 grinders to grind up all large objects that could possibly damage our influent and sludge pumps further down the treatment process.
- **Primary Sedimentation:** The next treatment process is a physical treatment process where solids that settle or float are removed and sent to the digesters for further processing.
- **Activated Sludge:** Next is the activate sludge process. This process is a biological wastewater treatment process that uses microorganisms to speed up the decomposition of wastes. When activated sludge is added to wastewater, the microorganisms feed and grow on waste particles in the wastewater. As the organisms grow and reproduce, more and more waste is removed, leaving the wastewater partially cleaned. To function efficiently, the mass of organisms needs a steady balance of food and oxygen. These tasks are closely monitored by the operations staff.
- **Secondary Clarification:** Next is secondary clarification, like primary sedimentation/clarification, this also is a physical treatment process where solids that settle or float are removed and sent to the next treatment process. The difference between Secondary Clarification and primary sedimentation is that the solids removed from the secondary clarifiers goes to 2 places. Some goes to waste to the DAFT and some goes back to the activated sludge process for further treatment. (*Microorganisms must be returned to the activated sludge process to keep an equal balance of food and microorganisms*).
- **DAFT (dissolved air floatation thickener):** Next is the DAFT. The dissolved air floatation thickening process uses air bubbles to thicken WAS(waste active sludge) solids removed from the secondary clarifier, by floating solids to the tank surface, where they are removed and sent to the digesters for final processing.
- **Sludge Digestion:** In the anaerobic digestion process, all the organic material removed from the primary sedimentation tanks and DAFT's are digested by anaerobic bacteria. The end products are methane, carbon dioxide, water and neutralized organic matter.
- **Solids Handling:** This is the process where all the neutralized sludge from the digester is finally treated. Sludge from the digester is pumped to the screw press where it is conditioned with a polymer (chemical that reacts with the sludge to remove the water from the sludge and bind the sludge particles together) in order to dewater the sludge and produce a dry cake for final disposal to the Redwood landfill.

Glossary of terms continued...

- **Disinfection:** This is the end point for the wastewater- at this point wastewater flows through the chlorine contact tank. This contact tank allows for enough contact time for chlorine solution to disinfect the wastewater. Sodium bisulfite is introduced at the end of the tank to neutralize any residual chlorine to protect the bay.
- **MLSS (mixed liquor suspended solids):** Suspended solids in the mixed liquor of an aeration tank measured in mg/l
- **MCRT (mean cell resident time):** An expression of the average time that a microorganism will spend in the activated sludge process.
- **SVI (sludge volume index):** This is a calculation used to indicate the settling ability of activated sludge in the secondary clarifier.
- **RAS (return activated sludge):** The purpose of returning activated sludge, is to maintain a sufficient concentration of activated sludge in the aeration tank.
- **WAS (waste activated sludge):** To maintain a stable process, the amount of solids added each day to the activated sludge process are removed as WAS. We track this by our MCRT which averages 3 days
- **TWAS (thickened waste activated sludge):** The WAS is thickened in the DAFT and the thickened sludge is then pumped to the digester.
- **MPN (most probable number):** Concentrations of total coliform bacteria are reported as the most probable number. The MPN is not the absolute count of the bacteria but a statistical estimate of their concentration.
- **Bio-solids:** Anaerobic digested sludge is pumped to a screw press where excess water is removed to reduce the volume (and weight) thus producing an end result called bio-solids.
- **Polymer:** Organic polymers are added to digested sludge to bring out the formation of larger particles by bridging to improve processing.

Wastewater Acronyms

ACWA	Assoc of California Water Agencies	APWA	American Public Works Association
AWWA	American Water Works Association	BAAQMD	Bay Area Air Quality Management District
BACWA	Bay Area Clean Water Agencies	BAPPG:	Bay Area Pollution Prevention Group
CASA	California Association of Sanitation Agencies	CSDA	California Special Districts Association
CSRMA:	California Sanitation Risk Management Authority	CAAQS	California Ambient Air Quality Standard
CalARP	California Accidental Release Prevention Program	CARB	California Air Resources Board
CDO	Cease and Desist Order	CECs	Constituents of Emerging Concern
CEQA	California Environmental Quality Act	CIWQS	California Integrated Water Quality System
CFR	Code of Federal Regulations	CMOM	Capacity, Management, Operation and Maintenance
CIWMB	California Integrated Waste Management Board	CPUC	California Public Utilities Commission
CSO	Combined Sewer Overflow	CTR	California Toxics Rule
CWA	Clean Water Act	CWAP	Clean Water Action Plan
CWARA	Clean Water Authority Restoration Act	CWEA	California Water Environment Association
DHS	Dept of Health Services	DTSC	Dept of Toxic Substances Control
EBEP	Enclosed Bays and Estuaries Plan	EDW	Effluent Dominated Water body
EIS/EIR	Environmental Impact Statement/Report	EPA	Environmental Protection Agency
ERAF	Educational Reserve Augmentation Fund	ESMP	Electronic Self-Monitoring Report
FOG	Fats, Oils and Grease	GASB	Government Accounting Standards Board
ISWP	Inland Surface Waters Plan	JPA	Joint Powers Authority
LAFCO	Local Agency Formation Commission	LOCC	League of California Cities
MACT	Maximum Achievable Control Technology (air controls)	MCL	Maximum Contaminant Level
MMP	Mandatory Minimum Penalty	MOU	Memorandum of Understanding
MUN	Municipal Drinking Water Use	NACWA	National Association of Clean Water Agencies
NGOs	Non Governmental Organizations	NOX	Nitrogen Oxides
NPDES	Nat'l Pollutant Discharge Elimination System	NRDC	Natural Resources Defense Council
NTR	National Toxics Rule	OWP:	Office of Water Programs
OSHA:	Occupational Safety and Health Administration	PCBs	Poly Chlorinated Biphenyls
POTWs	Publicly Owned Treatment Works	PPCPs	Pharmaceutical and personal Care Products
QA/QC	Quality Assurance / Quality Control	Region	IX Western Region of EPA (CA, AZ, NV & HI)
RFP	Request For Proposals	RMP	Risk Management Program
RFQ	Request For Qualifications	RWQCB	Regional Water Quality Control Board
SEP	Supplementary Environmental Projects	SIP	State Implementation Policy (CTR/NTR criteria)
SFEI:	San Francisco Estuary Institute	SRF	State Revolving Fund
SSO	Sanitary Sewer Overflow	SSMP	Sewer System Management Plan
SWRCB	State Water Resources Control Board	TMDL	Total Maximum Daily Load
WDR	Waste Discharge Requirements	WEF	Water Environment Federation
WERF	Water Environment Research Foundation	WET	Whole Effluent Toxicity or Waste Extraction Test
WMI	Watershed Management Initiative	WRFP	Water Recycling Funding Program
WRDA	Water Resource Development Act	WWTP	Wastewater Treatment Plant
WQBEL	Water Quality Based Effluent Limitation Agency	WWWIFA	Water and Wastewater Infrastructure Financing

RESOLUTION NO. 2022-08

**A RESOLUTION OF SANITARY DISTRICT NO. 5 OF MARIN COUNTY
REJECTING ALL BIDS FOR 2022 SEWER REHABILITATION PROJECT**

WHEREAS, Sanitary District No. 5 of Marin County, California, is a public entity organized under the laws of the State of California (hereinafter “District”); and

WHEREAS, the District advertised an Invitation to Bid (“ITB”) for the 2022 Sewer Rehabilitation Project (“Project”) and opened bids on June 24, 2022; and

WHEREAS, California Public Contract Code section 20783 allows Sanitation Districts to reject all bids and re-advertise a construction contract; and

WHEREAS, in Specification Sections 00010 (Notice Inviting Bids), 00100 (Instructions to Bidders), and 00300 (Bid Form) of the ITB, the District reserved the sole right to reject any or all bids.

NOW, THEREFORE, BE IT RESOLVED that the District does hereby reject all submitted bids for the Project; and

BE IT FURTHER RESOLVED that District staff is authorized to re-advertise the Project for bid utilizing the revised specifications prepared by the District Engineer.

* * * * *

I certify that the foregoing is a full, true, and correct copy of a resolution duly and regularly passed and adopted by the Board of Directors of Sanitary District No. 5 of Marin County, California, at a meeting thereof held on the 21st of July, 2022, by the following vote:

AYES, and in favor thereof, Directors:

NOES, Directors:

ABSENT, Directors:

ABSTAIN, Directors:

APPROVED:

ATTEST:

John Carapiet
President, Board of Directors

Tod Moody
Secretary, Board of Directors

Management

Tony Rubio District Manager
Robin Dorhrmann Office Manager

2001 Paradise Drive
Tiburon CA 94920
415-435-1501 Tel.
415-435-0221 Fax.
www.sani5.org

**SANITARY DISTRICT
of MARIN COUNTY**



1922-2022

Board of Directors

John Carapiet President
Omar Arias Vice President
Tod Moody Secretary
Caherine Benediktsson Director
Richard Snyder Director

100 Years of Public Service

RESOLUTION 2022-09

A RESOLUTION HONORING TIM O'DAY

WHEREAS, the SD5 community lost a strong, forward-thinking leader, generous and knowledgeable mentor, Timothy O'Day, on Thursday, June 2, 2022;

WHEREAS, Tim O'Day served more than 20 years with Sanitary District No. 5 of Marin County;

WHEREAS, Tim O'Day inspired multiple operators and trained them to be effective and efficient members of the Sanitary District No. 5 of Marin County;

WHEREAS Tim O'Day's sense of humor, kindness, energy and graciousness enriched those fortunate enough to know and work with him;

WHEREAS, Tim O'Day has served as a good friend and colleague to many SD5 employees and directors;

Tim O'Day is survived by his wife Angela, his three youngest sons Thomas, Matthew and Rory, and is preceded in death by his eldest son Patrick. He also leaves behind five grandchildren Kylee, Patrick, Georgia, Drew, and Brady.

NOW, THEREFORE, BE IT PROCLAIMED, that I, John Carapiet, as President of the Board of Directors of Sanitary District No. 5 of Marin County, on behalf of the Board of Directors of the District, shall and does hereby state our formal appreciation and remembrance of Timothy O'Day, for his kindness and pro-active service of over 20 years to the public through his work at the District; and express that the Board of Directors, his co-workers and friends, and the citizens of the Town of Tiburon and City of Belvedere, share in the appreciation of Tim O'Day for all his many contributions to the health and to the wellbeing of the community through his work at the District

* * * * *

I certify that the foregoing is a full, true, and correct and passed by the Board of Directors of Sanitary District No. 5 of Marin County, California, at a meeting thereof held on July 21, 2022, by the following vote:

AYES, and in favor thereof, Directors:

NOES, Directors:

ABSTAIN, Directors:

ABSENT, Directors:

APPROVED:

ATTEST:

John Carapiet
President, Board of Directors

Tod Moody
Secretary, Board of Directors